

User's Guide



Winflash.exe Flash Upgrade Utility

Copyright

© Copyright 2007 by Phoenix Technologies Ltd. All rights reserved. No part of this publication may be reproduced, transmitted, transcribed, stored in a retrieval system, or translated into any language or computer language, in any form or by any means, electronic, mechanical, magnetic, optical, chemical, manual, or otherwise, without the prior written permission of Phoenix Technologies Ltd.

Disclaimers

Phoenix Technologies Ltd. makes no representations or warranties with respect to the design and documentation herein described and especially disclaims any implied warranties of merchantability or fitness for a particular purpose. Further, Phoenix Technologies Ltd. reserves the right to revise this design and associated documentation and to make changes from time to time in the content without obligation of Phoenix Technologies Ltd. to notify any person of such revisions or changes.

Trademarks

The following list contains trademarks and registered trademarks of Phoenix Technologies Ltd. Exclusion from this list does not imply loss of trademark or registered trademark status by Phoenix Technologies Ltd. FirstWare; IMAGECAST; cME; Phoenix; TrustedCore; FirstBIOS; TrustConnector; PhoenixBIOS; StrongROM; CoreArchitect; Phoenix Technologies; WinPhlash; Phoenix Technologies Logo; Multikey; Phoenix Award; Trust Tracker; PrintWorks; Trust Shield; Ready 64; Phoenix Always; AwardBIOS; Phoenix Always Logo; Award Software International; Trusted Security Suite; Award Software International Logo; TCSSubscribe; Trusted Device Suite.

Any use of other companies or legal entities' copyrights, trademarks, or registered trademarks is unintentional and in no way implies any legal claim to those copyrights, trademarks, or registered trademarks.

Contacting Us

Corporate Address:

Phoenix Technologies Ltd.
411 East Plumeria Drive
San Jose, California 95134
USA

Web site: www.phoenix.com
Support: support.phoenix.com

Table of Contents	
Copyright	ii
Disclaimers	ii
Trademarks	ii
Contacting Us	ii
Introduction.....	1
Running WinFlash	1
Accessing WinFlash	1
Backing up the BIOS	2
Updating the BIOS	3
Additional Options	4
Rebooting	5
Winflash as a command prompt utility.....	5
Save and update	5
Example 1	6
Example 2	6
Example 3	6
Clear data.....	6
Exit utility or reset system	6
Other parameters	6
Summary of switches	7

Introduction

The Winflash utility is a 32/64 bit merged application that runs in a 32/64 bit Windows environment to update, backup, and restore the system BIOS on a flash device. The utility, previously named flash.exe, runs under Windows 98, ME, NT, 2000, XP, Vista (32/64) and WinPE.

Running WinFlash

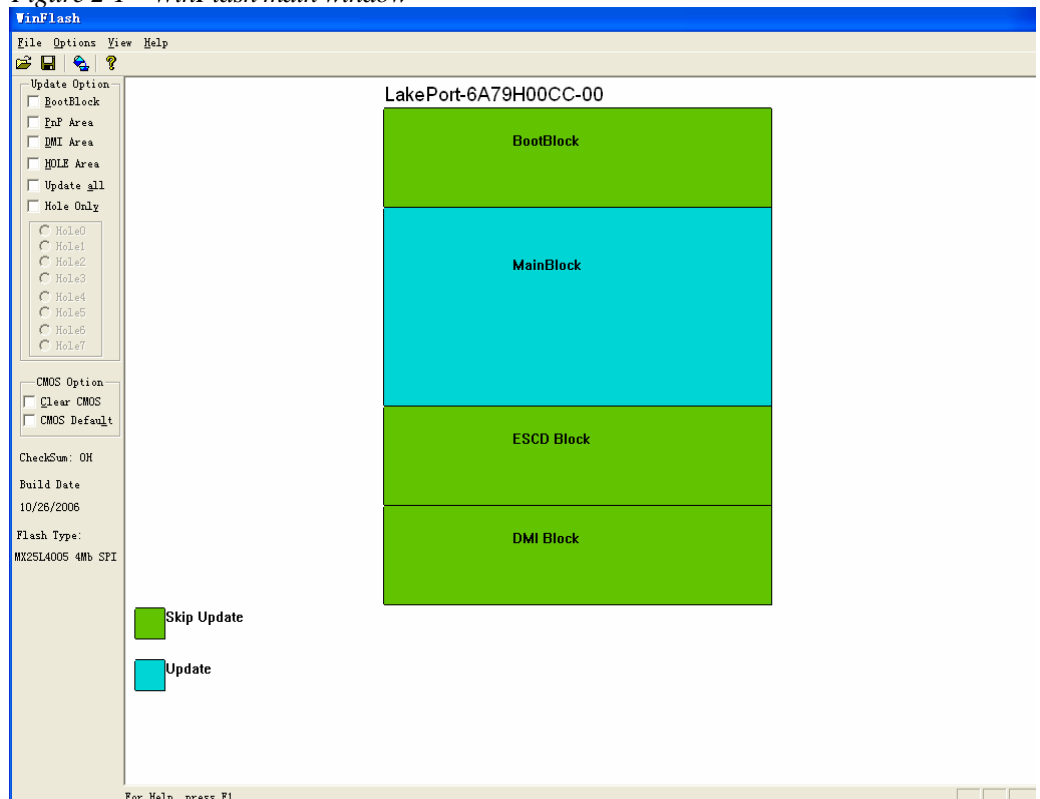
This section provides information about how to use the WinFlash utility.

Accessing WinFlash

To run WinFlash as a Windows-based utility, use the following steps (please make sure winflash.sys or winflash64.sys is available):

1. Close all other programs.
2. Click the WINFLASH.EXE icon to start the program. The main window appears as in the following figure.

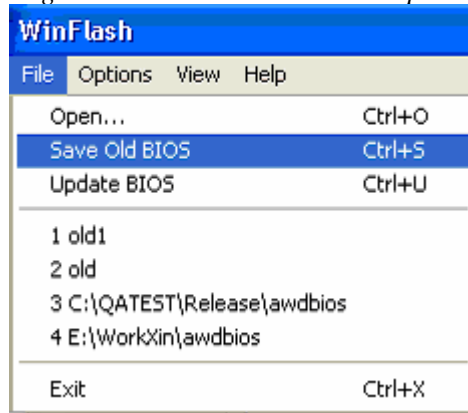
Figure 2-1 WinFlash main window



Backing up the BIOS

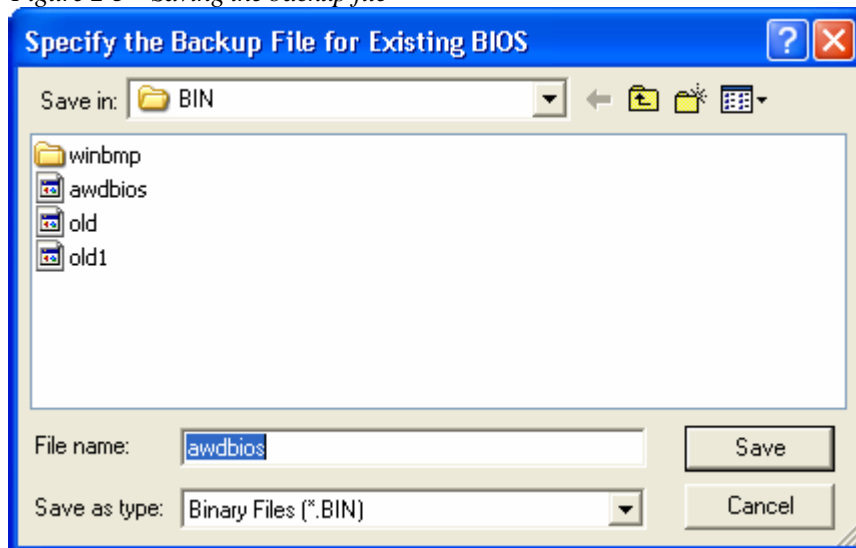
To save the old BIOS to a file, select File>Save Old BIOS from the main menu as shown in the following example.

Figure 2-2 Save Old BIOS menu option



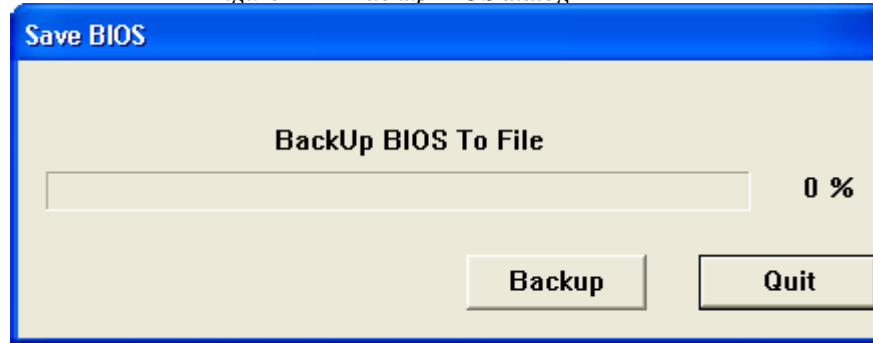
Specify the name of the backup file and click the **Save** button.

Figure 2-3 Saving the backup file



When the Backup BIOS dialog displays, click the **Backup** button to start backing up the BIOS.

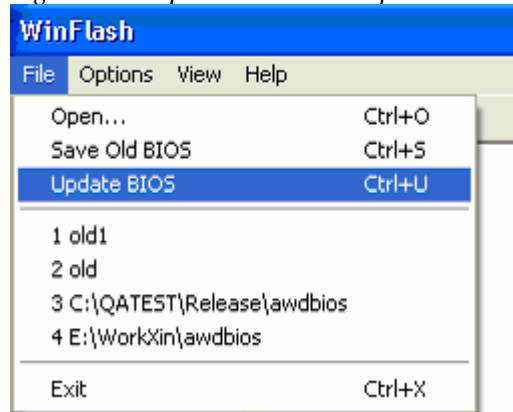
Figure 2-4 Backup BIOS dialog



Updating the BIOS

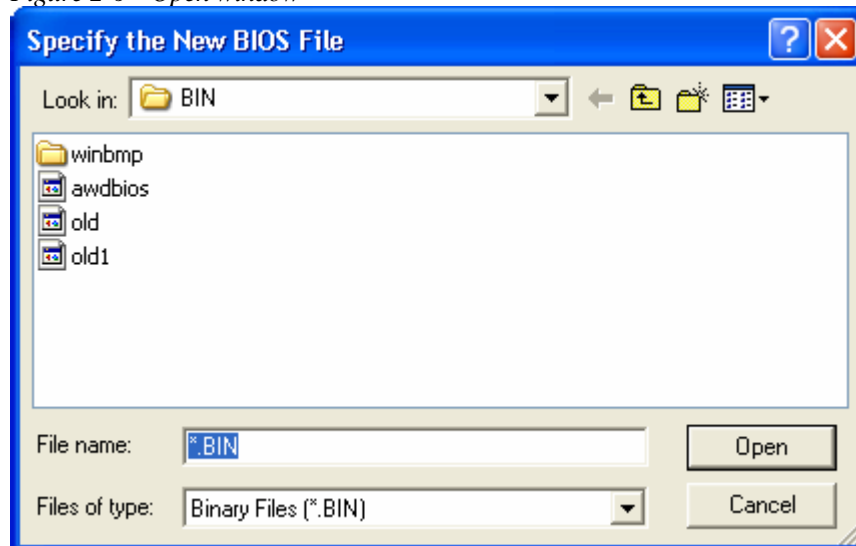
To update the BIOS, select File>Update BIOS from the main menu as shown in the following figure.

Figure 2-5 Update BIOS menu option



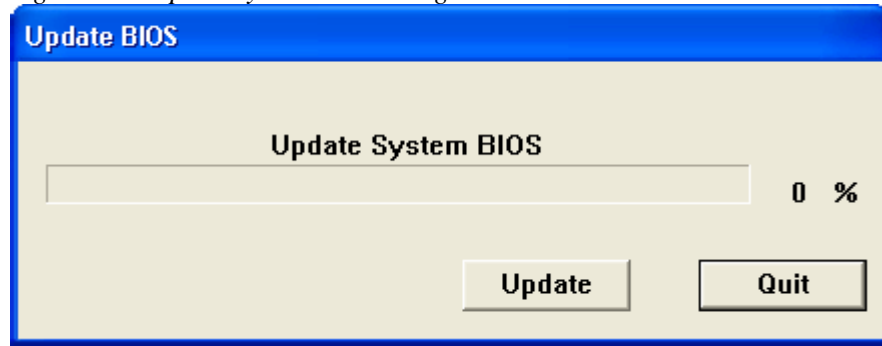
When the Open window displays, specify the name of the BIOS file in the File Name field and click the Open button.

Figure 2-6 Open window



When the Update System BIOS dialog displays, click the Update button. An update percentage window appears as in the following figure:

Figure 2-7 Update system BIOS dialog



Additional Options

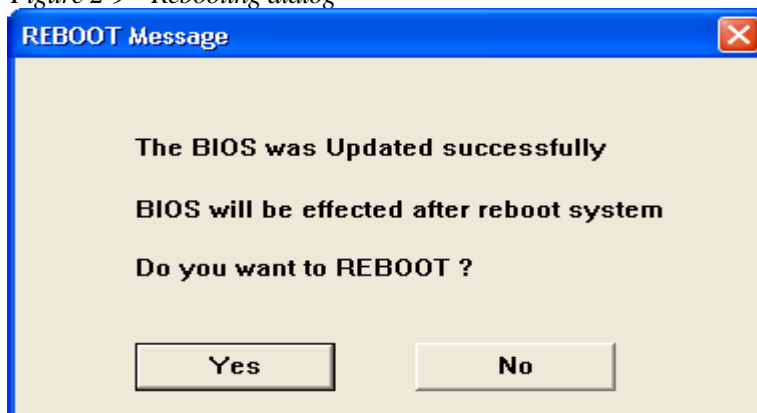
You can do the following additional tasks with WinFlash:

- Update BootBlock
- Clear DMI
- Clear PNP
- Clear CMOS
- Load CMOS default
- Update one hole only
- Update whole Hole area

Rebooting

After you update the BIOS, the WinFlash program displays the following dialog asking if you want to reboot.

Figure 2-9 Rebooting dialog



Select Yes to reboot your system. After your system has rebooted, the updates to your BIOS will take effect.

Winflash as a command prompt utility

You can also run the Winflash utility at the command line. This section describes the command line parameters and switches, with examples of their usage.

Syntax: FLASH [FileName1] [FileName2] [/<sw>[/<sw>...]]
FileName1: New BIOS name for flash programming
FileName2: BIOS file for backing up the *original* BIOS

Save and update

/py Program (update) BIOS; switch **y** or **n**.
/sy Save old BIOS; switch **y** or **n**.

Example 1

To program a new BIOS and save the old BIOS, enter the following at the command line:

```
Winflash newbios.bin oldbios.bin /py /sy
```

This program saves the old BIOS to the specified file and updates it with the new BIOS.

Example 2

To program a new BIOS without saving the old BIOS, enter the following at the command line:

```
Winflash newbios.bin /py
```

Example 3

To save the old BIOS to a file without updating it, enter the following at the command line:

```
Winflash oldbios.bin /sy
```

Clear data

/cc: Clear CMOS Data after programming

/cp: Clear PnP(ESCD) Data after programming

/cd: Clear DMI Data after programming

Exit utility or reset system

/Exit: Return to OS when programming is done

/R: RESET system after programming

Other parameters

/nbl: No BIOS Lock string support, skip comparison of BIOS Lock string

/drv: Unload driver, when Winflash exits

/skip: Do not copy driver file to Windows system driver directory

Summary of switches

Table 2-1 Winflash.exe switch summary

Switch	Description
[FileName1]	New BIOS Name For Flash Programming
[FileName2]	BIOS File For Backing-up the Original BIOS
/py	Program Flash Memory

Switch	Description
/sy	Backup Original BIOS To Disk File
/cd	Clear DMI data after programming
/cp	Clear PnP (ESCD) data after programming
/cc	Skip BootBlock programming
/nbl	No BIOS Lock string support
/exit	Return to OS when programming is done
/r	Reset system after programming
/skip	Do not copy driver file to system directory
/drv	Unload driver when Winflash exits