

User Manual

Foldable Keyboard



Version: A

Issue Date: 2004/7/23

Regulatory Compliance

This device complies with Part 15 of the FCC Rules. Operation is subject to the following two conditions: (1) This device may not cause harmful interference, and (2) This device must accept any interference received, including interference that may cause undesired operation.

FCC statement

Tested to Comply

This equipment has been tested and found to comply with the limits of a Class B digital device, pursuant to Part 15 of the FCC Rules. These limits are designed to provide reasonable protection against harmful interference in a residential installation. This equipment generates, uses, and can radiate radio frequency energy and if not installed and used in accordance with the instructions, may cause harmful interference to radio communications. However, there is no guarantee that interference will not occur in a particular installation. If this equipment does cause harmful interference to radio or television reception, which can be determined by turning the equipment off and on, the user is encouraged to try to correct the interference by one or more of the following measures:

- Reorient or relocate the receiving antenna
- Increase the separation between the equipment and receiver
- Move the computer away from the receiver
- Connect the equipment into an outlet on a circuit different from that to which the receiver is connected.

Index

Introduction

Foldable Keyboard Specification 1

Open and Close the Keyboard

Open Foldable keyboard2

Close Foldable keyboard.....3

Install and Remove the Keyboard Driver

Install the Keyboard Driver4

Customize your keyboard

Configure the Keyboard.....8

Combination Keys.....9

Assign Hotkeys 11

Frequently Asked Questions 12

Technical Support 13

Introduction

The Foldable Keyboard is not only a smart mechanical design but also a very convenient, portable input device for your Pocket PC device. Hope it can bring you enjoyment of typing

Foldable Keyboard Specification

Weight: 200 grams

Temperature Endurance: 70° C

Power Consumption:

Working: 0.5 mA

Sleeping: 1 μ A

You can get many benefits with the Foldable Keyboard :

Easily connection with your Pocket PC device.

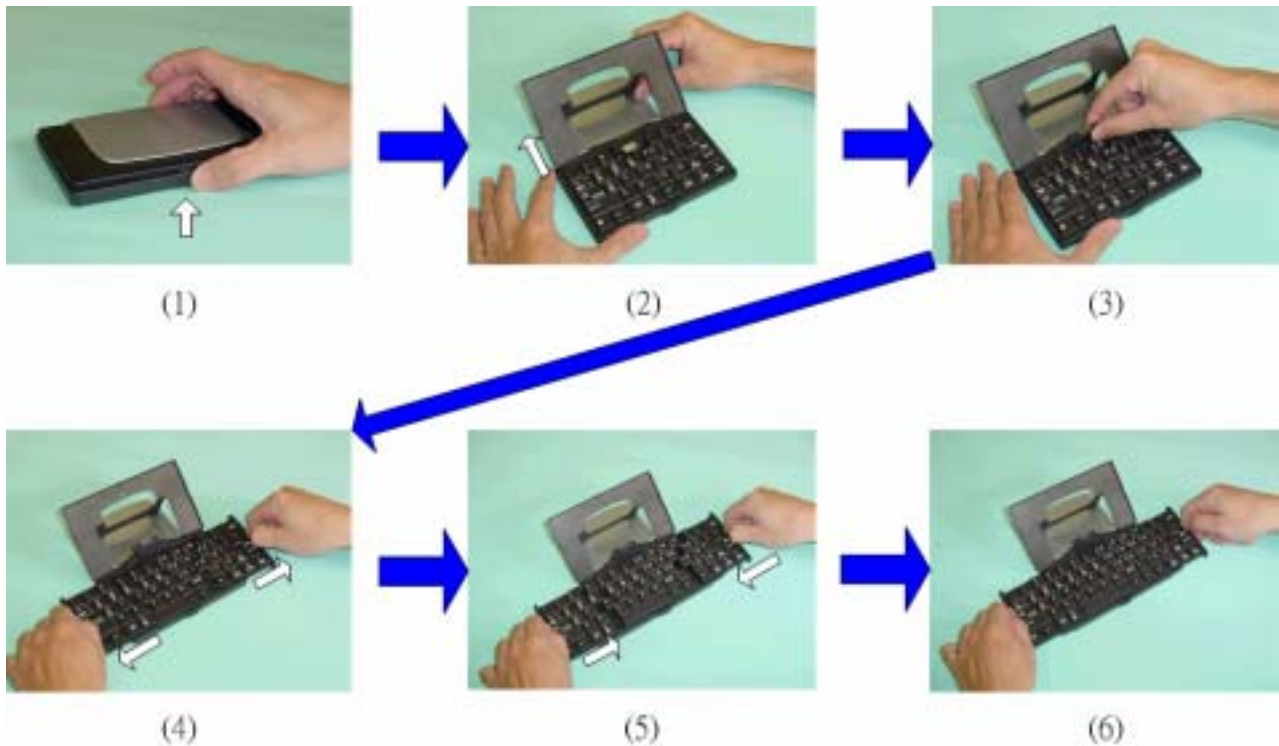
Fast typing text into your Pocket PC device.

Combination keys provides fast operation

Convenient Portability

Open and Close Keyboard

Open Foldable Keyboard



Step 1. Open the keyboard by pressing the button. [Photo (1)]

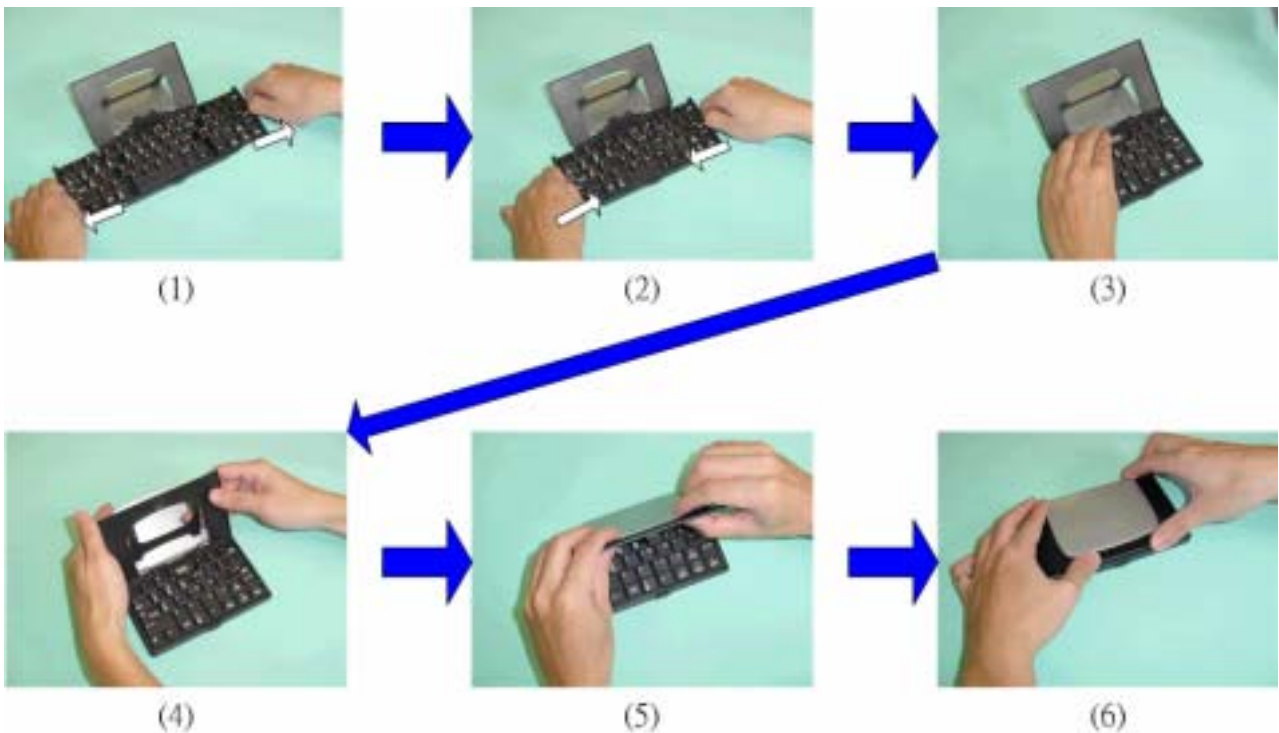
Step 2. Raise the lid and stand until they are fully extended. [Photo (2)]

Step 3. Flip up the keyboard connector stand to a fully upright position. [Photo (3)]

Step 4. Pull out the left and right section of the keyboard until the middle section pop up. [Photo (4)]

Step 5. Push the left and right section of the keyboard together.
[Photo (5), (6)]

Close Foldable keyboard



Step 1. Gently pull the left and right section of the keyboard apart.

[Photo (1)]

Step 2. Push the left and right section of the keyboard forward the center of the keyboard. The middle section will automatically move down and make room for the left and right sections.

DO NOT Push Down on the middle section. [Photo (2)]

Step 3. Flip down the keyboard connector head until it is flat with the keyboard. [Photo (3)]

Step 4. Pull the lid and stand together. [Photo (4)]

Step 5. Lock together the lid to the upper frame. [Photo (5)]

Step 6. Press down on the cover until it locks in the closed position.

[Photo (6)]

Install and Remove the Keyboard Driver

Install the Keyboard Driver

Please complete the following steps:

- 1).Check the part “Before Installation“ first
- 2) Install the driver and then launch the software
- 3) Connect the keyboard to Pocket PC device.

Before Installation

Please disable any other keyboard applications that you have installed on your Pocket PC device to prevent conflicts




Make sure there is at least 100 Kb of free memory to install the driver (450 Kb for the Japanese Pocket PC device).

Step1: Install the Driver

1. Connect the Pocket PC device to a computer through the cradle or cable.
2. Establish connection between the computer and Pocket PC device by using Microsoft ActiveSync

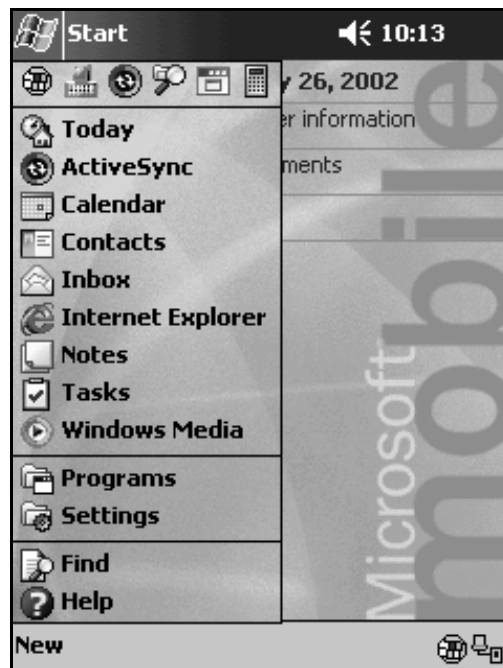


3. Insert the CD/Floppy Disk into the CD-ROM/ Floppy drive.

4. The install process will be proceeded automatically if the CD-ROM drive is set to auto-run mode, please follow the on-screen instructions to install software. Or you need to implement step 5-7 to install driver manually.
5. Tap twice on the **My Computer**  icon , and then choose your CD-ROM drive  / Floppy Drive . 
6. Choose the directory which contains the just language version of driver that you want to install
7. Execute **Setup.exe** inside the directory. Please follow the on-screen procedure step by step.

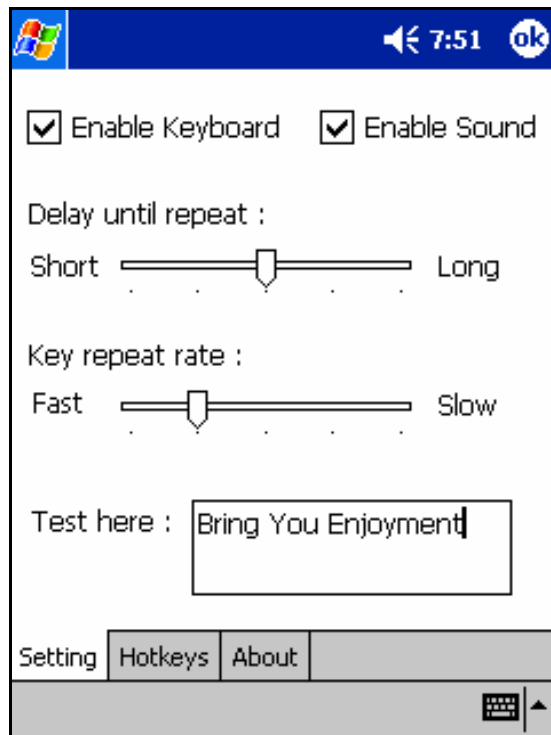
Step 2: Launch the software

1. Turn on your Pocket PC.
2. Select **Start > Programs**.



3. Tap “**Foldable Keyboard**” icon, and add a check mark in the check box in front of the “**Enable Keyboard**”





Step 3: Connect Keyboard to Pocket PC

Put the Pocket PC with the keyboard connector at the top of the keyboard. Gently slide the Pocket PC down onto the keyboard connector as far as it will go.

Remove the Keyboard

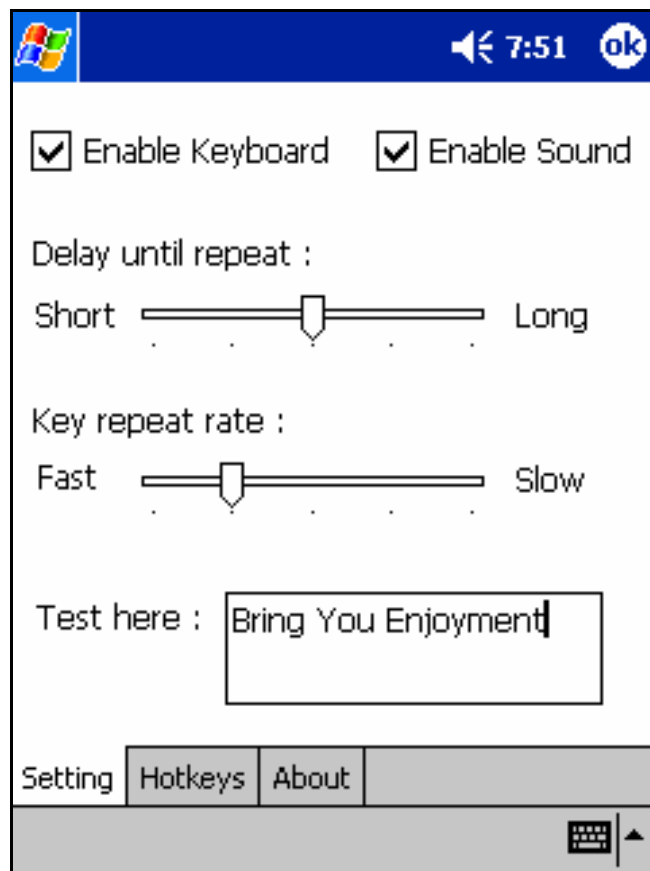
To disconnect the Pocket PC from keyboard, gently pull the Pocket PC up from the connector.

Customize Your Keyboard

Configuring the Keyboard

You could have several kinds of typing feeling on your foldable Keyboard by customizing your keyboard:

1. On your Pocket PC, tap the **Foldable Keyboard** icon and launch it.



2. Select the **Setting** tab.
3. Tap the Enable Sound check box to hear a click every time you press a key.

Slide the **Delay until repeat** indicator to lengthen or shorten the time the keyboard waits before repeating a pressed key. The right side of the scale specifies a longer delay time.




Slide the **Key repeat rate** indicator to speed up or slow down the rate at which the keyboard repeatedly displays a pressed key.

The right side of the scale specifies a slower repeat rate.

Tap in the **Test here:** field to enter characters from the keyboard.

Combination Keys

The keys on the Foldable Keyboard perform additional functions when pressed in the combinations indicated in below table.

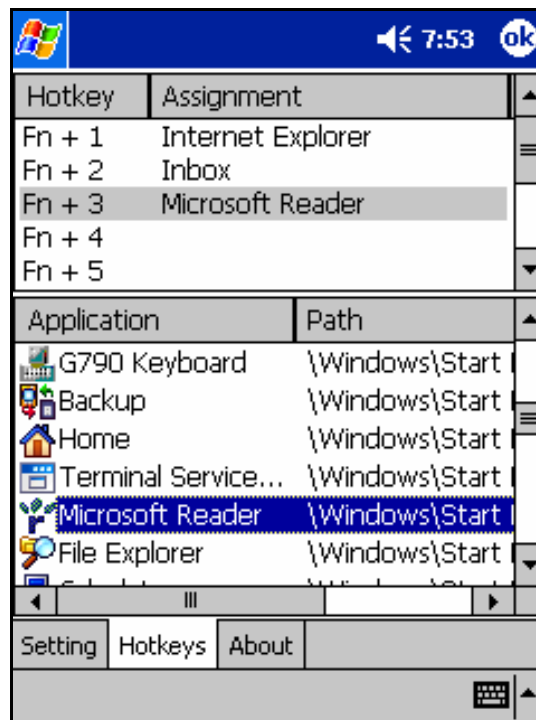
Keystroke Combination	Function
Shift + letter key	Capital letter
Shift + number key	Upper left character on key
	Pocket PC device Start Menu
	Today
Fn + Q	Inbox
Fn + W	Pocket Word
Fn + E	Pocket Excel
Fn + R	Calendar
Fn + T	Tasks
Fn + Y	Notes
Fn + A	Contacts
Fn + 	Explorer

Fn + CapsLock	NumLock mode
Fn + Tab	Escape
Fn + Backspace	Off
Fn + number key	Hotkey function
Fn + Enter	OK
Fn + up arrow	Page up
Fn + down arrow	Page down
Fn + left arrow	Home
Fn + right arrow	End
Ctrl + C	Copy
Ctrl + V	Paste
Ctrl + X	Cut
Ctrl + A	Select all
Ctrl + Z	Undo
Shift + right arrow	Selects area to the right of the cursor
Shift + left arrow	Selects area to the left of the cursor
Shift + up arrow	Selects area above the cursor
Shift + down arrow	Selects area below the cursor

Assign Hotkeys

Through hotkey combinations Fn+0 through Fn+9, you can launch a variety of applications with just a few keystrokes by following the procedure below

1. On your Pocket PC, tap **Foldable Keyboard** application and launch it.
2. Select the **Hotkeys** tab.



3. In the top pane, select the hotkey combination you want to configure.
4. In the bottom pane, select the application you want to assign to the hotkey combination.
5. Select the **OK** button at the top of the screen to set the assignment and close the window, and then you have finished the assignments of Hotkeys.

Frequently Asked Questions & Trouble Shooting

A) How do I uninstall the driver?

Select **Start > Settings > System tab > Remove Programs**.

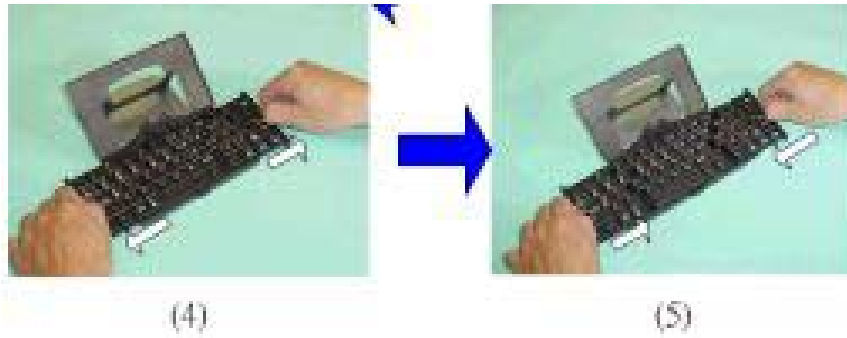
Select **Foldable Keyboard** from the list of applications. Then press the **Reset** button the Pocket PC for several seconds so your new settings can take effect.

B) I pressed a key on the keyboard, but the letter did not register.

Be sure the keyboard is securely connected to the Pocket PC. If the connection is secure, otherwise you need to remove the keyboard driver from the Pocket PC, and reinstall it.

C) How should I do if the right/left key frames lock the slanted middle frame when I close/open the keyboard, and I can't continue opening or closing the keyboard?

Once you experience this situation, just gently and fully extend the right/left key frames again; then the middle frames will go back to a horizontal position, then you can open or close the keyboard again. (Please refer to page 2, step 4 and step 5)



Technical Support

To prepare the enough information below will help you to get fastest response from distributors/Dealers.

- 1) The model name of keyboard.
- 2) Invoice date of buying
- 3) Serial numbers of the keyboard shown on label .
- 4) Conditions under which the problem occurred.
- 5) Environment of software you are using.