

Acer GridVista™ User's Manual

Contents

- 1** **Introducing Acer GridVista™**
- 2** **System requirements**
- 3** **Installation**
- 4** **Launching the application**
- 5** **Using Acer GridVista**
 - 5.1 Splitting the screen into grids
 - 5.2 Placing a window to a grid
 - 5.3 Changing the window transparency
 - 5.4 Locking a window to a grid
 - 5.5 Enabling the **Always on top** feature
- 6** **Other Acer GridVista options**
 - 6.1 Changing Acer GridVista settings
 - 6.2 Displaying Acer GridVista information
 - 6.3 Closing Acer GridVista

1. Introducing Acer GridVista™

Acer GridVista is a productive utility that manages multiple windows on the same screen. This application allows you to:

- split the screen into grids to display up to four windows simultaneously
- transfer information easily between windows or applications
- switch quickly between windows
- see through the windows using the transparency settings
- manipulate two windows simultaneously

Note: The Acer GridVista application works only on Acer monitors.

2. System requirements

Make sure your system meets the following requirements before you install Acer GridVista:

Operating system	Windows® XP
System memory	128 MB or higher
Disk space	100 MB or higher

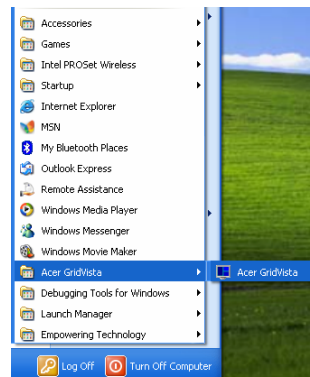
3. Installation


To install Acer GridVista:

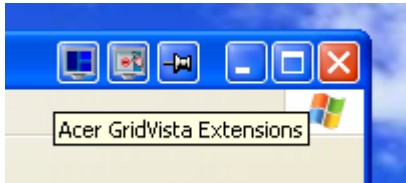
1. Place the Acer GridVista CD into the optical drive. The Acer GridVista Autorun Program window will appear.
2. Click on **Acer GridVista Software Installation** to install; otherwise, click on the **Acer GridVista Help Manual** to view the help file.
3. When installation is finished, click on **Exit**.

4. Launching the application

To launch Acer GridVista, click Start > All Programs > Acer GridVista > Acer GridVista.



After launching the application, the Acer GridVista icon  appears on the taskbar and the Acer GridVista Button Center appears near the **Minimize** button of every open window.

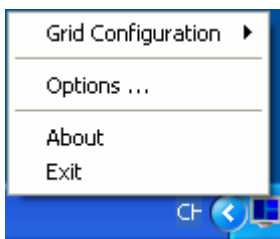


5. Using Acer GridVista

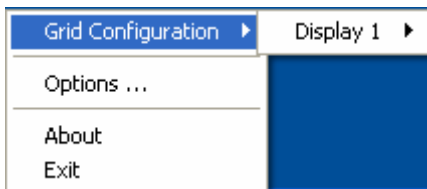
5.1 Splitting the screen into grids

To split the screen into grids:

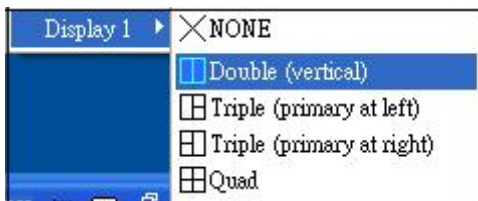
1. Right-click on the Acer GridVista Icon , then select **Grid Configuration** from the pop-up menu.



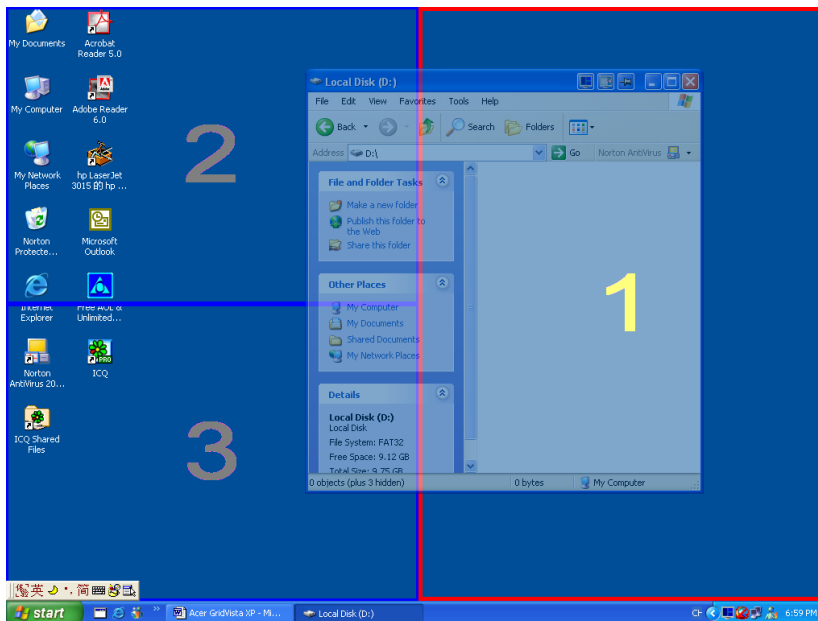
2. Click on the display you want to split.



3. Select a grid configuration from the pop-up menu to split the screen. Default setting is NONE.



The screen now displays the grids.



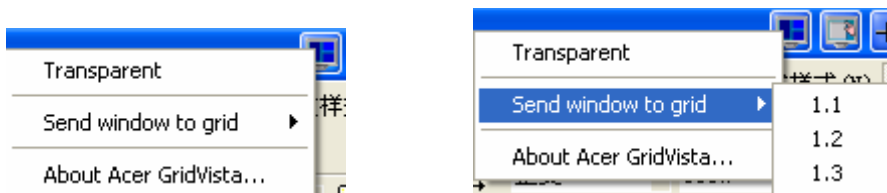
5.2 Placing a window to a grid

To place a window to a grid:

1. Click on the title bar of an open window, then drag the window to an empty grid.

OR

Right-click the Acer GridVista Extensions icon from the Acer GridVista Button Center, select **Send window to grid** and the grid where you want to place the window.



Note: 1.1 means window 1 (primary window) goes to grid 1, 1.2 means window 1 to grid 2, and so on.

2. Repeat the instructions to place another window on an empty grid until all grids are occupied.

5.3 Changing the window transparency

You may change the window transparency to see the items and icons at the back of the windows. To do this:

1. Right-click the Acer GridVista Extensions icon from the Acer GridVista



Button Center, then select **Transparent**.




2. The icons/items at the back of the window are now visible. Repeat the instructions to turn the transparency off.

5.4 Locking a window to a grid

You may lock a window on a particular grid to prevent accidental dragging to another grid. To lock the window on a grid:



1. Select the window you want to lock on a grid.
2. Click the **Lock** icon  from the Acer GridVista Button Center on the window title bar. The lock icon changes to  to indicate that the window will lock on the selected grid.
3. Select the grid where you want to place the window.

Note: The **Lock to grid** feature is disabled when the current window is maximized.

To unlock the window from the grid, click on the lock icon .

5.5 Enabling the Always on top feature

You can set a window to always appear on top of any other open window. To do this:

1. Select the window you want to always appear on top.
2. Click the **Lock** icon  from the Acer GridVista Button Center on the window title bar. The icon changes to  to indicate that the window was set to always appear on top of any other open window.

Note: The active window will always appear in front when you enable this feature on other open windows.

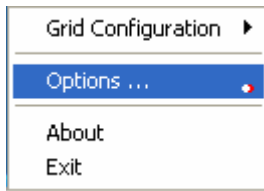
To turn this feature off, click the icon .

6. Other Acer GridVista options

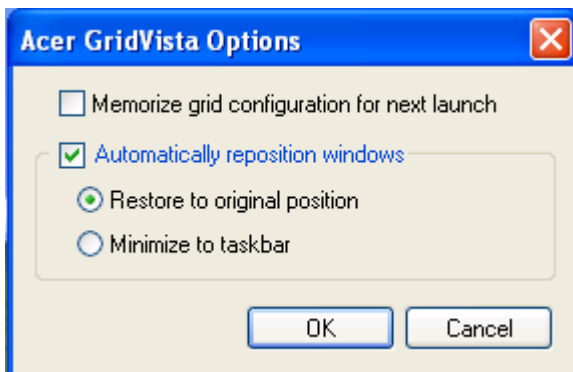
6.1 Changing Acer GridVista settings

To change Acer GridVista settings:

1. Right-click on the Acer GridVista Icon in the taskbar.
2. Select **Options** to display the Options window.



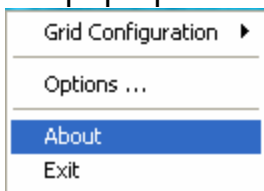
3. Change the settings from this window, then click **OK** when finished. Refer to the table below for the settings description.



Memorize grid configuration for next launch	Check this option to save the current grid configuration for next application launch.
Automatically reposition windows	Check this option to restore the position of the windows after closing Acer GridVista. You may choose to restore the windows to their original position or minimize all windows to the taskbar.

6.2 Displaying Acer GridVista information

Right-click on the Acer GridVista Icon in the taskbar, then select **About** from the pop-up menu to display Acer GridVista information.



6.3 Closing Acer GridVista

To close Acer GridVista, right-click on the Acer GridVista icon in the taskbar, then select **Exit**.

