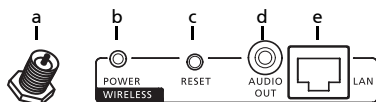


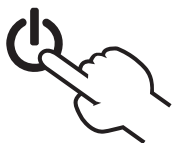
A. Hardware connection:

1. Guide to components

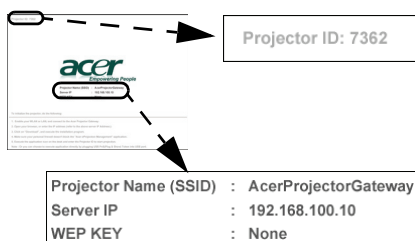


a	WLAN antenna connector		
b	Power indicator	d	Audio out jack
c	Reset button	e	Lan port

2. Turn on the projector



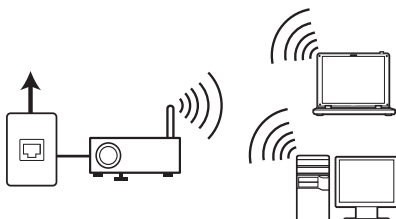
3. Check the information on the splash screen



Check **Projector ID**, **Projector Name (SSID)**, **Server IP** and **WEP** on the splash screen. The **Server IP** will be assigned by the network with DHCP enabled. Ask your supervisor for the wireless connection WEP key when WEP is enabled.

4. Connect to network

- Switch on your system, and activate your wireless LAN.



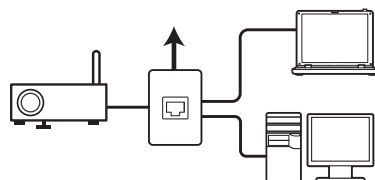
- Scan for available WLAN APs using your preferred WLAN manager.
- Select and connect to the access point labeled **AcerProjectorGateway**, or **AcerProjectorGatewayXXXX**.

Choose a wireless network

Click an item in the list below to connect to a wireless network in range or to get more information.



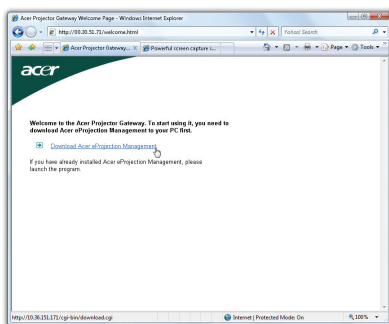
- Connect the projector to your LAN for a wired connection.



B. Software installation:

- The software is stored on the Acer Projector Gateway. Please follow the steps below to download and install:

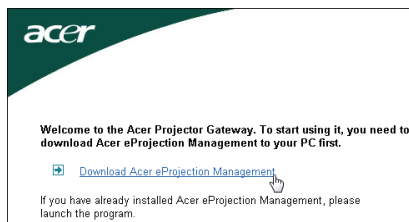
- Open the internet browser.
- You will automatically be taken to the welcome page.



- Enter the Server IP address into your browser's address bar if you do not see the welcome page.



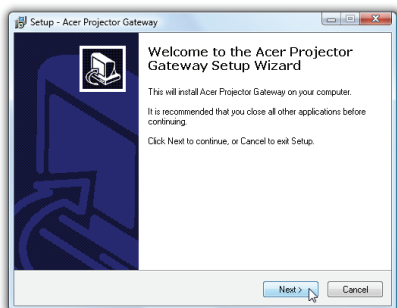
- d Click on **Download Acer eProjection Management** on the welcome page.



- e Click on **Run** to download and install the software.

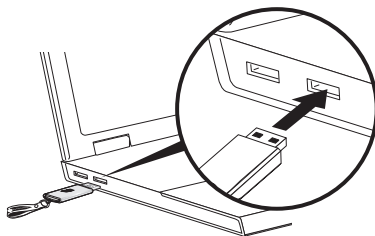


- f Click on **Next** to launch the **Welcome to the Acer Projector Gateway Setup Wizard**.



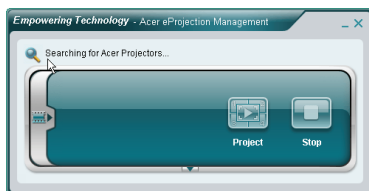
Note: Make sure your personal firewall doesn't block the Acer eProjection Management application.

2. You can also insert the bundled Acer Plug-and-Show (PnS) token featuring the windows autorun function into the USB port on your system.



C. Launch the software

Once the installation is complete or Acer PnS token is inserted into the USB port on your system, Acer eProjection Management will open.



Enter the **Projector ID** (if needed) and **Username** to log in to your Acer Projector.



Once you're connected, the PC screen will be projected.



Note: For more information, please refer to the online manual. All the illustrations in this quick guide are for reference only.