

Chapter 1

Installation

This chapter describes how to install ASM Pro on both the ASM-Station and ASM-Agent.

1.1. Installing ASM-Station

Before you proceed, make sure that your system meets all the system requirements described in the ASM Pro release note that accompanies your system. You may also want to change your screen resolution to 800 x 600 or higher for optimum viewing.

To install ASM-Station:

1. Insert ASM Pro's installation CD into the CD-ROM drive, access your CD-ROM drive and then double click Setup.exe to start the installation.
2. Follow the installation wizard. The program will ask for some information and prompt you to insert the appropriate Setup Disks. After ASM Pro finishes updating the registration, a screen asking you to restart your system appears.
3. Click **Finish** to reboot your system.



Remember to remove all diskettes from the drive(s) before rebooting the system.

1.2. Installing ASM-Agent



To use the RDM and/or UPS functions, you must install ASM-Agent. The drivers for these functions are automatically installed by the ASM-Agent installation.

The `asmconfig` utility is automatically launch during installation. You can also invoke the `asmconfig` utility after installation to enable, disable, or create a password for the server. (Do not confuse this password with the password for the ASM-Station.) For more information, please refer to Chapter 7.

The ASM-Agent password is required for the system administrator to change threshold values on the server from the ASM-Station (if the password is enabled). Setting server threshold values is discussed in detail in Chapter 6.



The password will be required when using the ASM-Station to remotely change or set any values for the agent, such as threshold values and any trap handling method. If the password is disabled, there will be no security protection for the agent when the station tries to change or set these values.

1.2.1 NetWare Agent Installation



Make sure snmp is configured properly

ASM-Agent requires SNMP.NLM running with ControlCommunity set to 'public'; otherwise, ASM-Station cannot communicate with ASM-Agent.

ASMAGENT.NCF, the script file which loads all related modules of ASM-Agent, loads SNMP with the following command:

```
load snmp control=public
```

If you load SNMP.NLM before ASM-Agent, make sure the ControlCommunity has been set properly. For more information, please refer to related documents about the SNMP Agent for NetWare (NetWare SNMP).

Please check your AUTOEXEC.NCF to see if you have loaded SNMP. Notice that because of the autoloading feature of NLM, you can not directly find where SNMP is loaded. The most common module is TCPIP.NLM which autoloads SNMP.NLM. If you are using TCPIP, load SNMP by using the command line `load snmp control=public` before loading TCPIP.

For NetWare 4.x users, if you are using INETCFG.NLM to configure the network, be sure to configure SNMP and make sure that the SNMP.NLM is running with ControlCommunity set to 'public'.

Follow these steps to install the NetWare agent:

1. Insert the ASM-Agent setup disk into the NetWare server's drive.
2. At the NetWare server console, type the following:

```
load <CD-ROM drive>\Setup
```


where <CD-ROM drive> is the drive letter of your CD-ROM.
3. You will be asked if you want to install the ASM-Agent on your system. Select **Yes** to install.
4. The setup program then detects the NetWare version and the model of the server. It then copies related NLM files into the SYS: SYSTEM directory and C: of your NetWare server. In addition, some necessary command lines will be added into AUTOEXEC.NCF in SYS: SYSTEM.
5. Press any key to continue. The ASM-Agent Configuration Utility is launched.
6. The Password option is highlighted. Set up a password, then exit the utility.



The password will be required when using the ASM-Station to remotely change or set any values for the agent, such as threshold values and any trap handling method. If the password is disabled, there will be no security protection for the agent when the station tries to change or set these values.

You may skip this step if you are installing ASM-Agent solely for the purpose of utilizing the UPS and/or RDM functions (refer to Chapter 7, ASM Pro Utilities, for more information about the asmcfg utility).

You must reboot the server to activate the ASM Pro drivers.



The ASM-Agent is automatically started after the server is restarted and running.

1.2.2 SCO OpenServer Agent Installation



Make sure snmp is configured properly.

ASM-Agent requires SNMP running with community set to 'public' and the IP address of the ASM-Station should be in the `/etc/snmpd.trap`. Otherwise, the ASM-Station cannot communicate with the ASM-Agent, and the server icon in the ASM-Station will remain RED.

Follow these steps to install the SCO-agent:

1. Insert this disk into the drive of server.
2. Login as root on the server that has SCO OpenServer installed.
3. Click on the **Software Manager** icon if you are in the desktop window, or execute **custom** if you are at the UNIX shell prompt.
4. Choose **Software** ▸ **Install New**.
5. The Begin Installation screen displays. Follow the onscreen instructions. Click on **Continue** to accept the defaults.
6. When the Select Media screen displays, click **Continue** to accept the default media (floppy disk drive 0).
7. At the Install Preferences menu, select **Full**.



*If the SCO Agent has been installed previously, the program will ask if you wish to preserve the existing config file. If you choose **Reinstall**, the program will overwrite the previously installed SCO Agent. If you choose **Cancel**, the installation will terminate.*

8. The `asmconfig` screen displays. Press **Enter**. You will be asked to enter and re-enter the new password. Next, select the **SNMP_Config** option to enter the target IP addresses to send a trap. (You can run `asmconfig` at a later time to enter the addresses. See Chapter 7, *ASM Pro Utilities*, for information about running `asmconfig`.)



If the SCO Agent has been installed previously, target IP addresses will appear on this screen.

9. Select **Quit** to exit the utility. The following message displays before the kernel relink.

`Adding device to system configuration files...`

10. When the installation is complete, the following message displays:

`Installation Complete.`

11. Exit Software Manager and reboot the system.

Configuring ASM-Agent for SCO OpenServer

You may skip the following if you are installing the ASM-Agent solely for the purpose of utilizing UPS and/or RDM functions.

- Find a server to invoke the *asmconfig* utility to set up a password for the agent. The password will be required when using the ASM-Station to remotely change or set any values for the agent, such as threshold values and any trap handling method. If the password is disabled, there will be no security protection for the agent when the station tries to change or set these values.
- */etc/snmpd.peers*, the file which SNMP daemon loads all related modules of subagent with the following configuration:

```
"asmsmuxd"      1.3.6.1.4.1.1050.25      ""
```

This file will be automatically updated if you install ASM-Agent for SCO OpenServer successfully.

- */etc/snmpd.trap*, the file describes the destination which SNMP traps send to with the following configuration:

```
public 192.9.210.19 162
```

This file will be automatically updated if you run the *asmconfig* utility to modify the SNMP config. You can also changed this file manually to add or remove SNMP trap destinations.

Refer to Chapter 7 (ASM Pro Utilities) for instructions on how to use the *asmconfig* utility.

1.2.3 SCO UnixWare Agent Installation



All of the following procedures require the root permission.

Follow these steps to install the SCO UnixWare agent:

If the ASM installation diskette is already available, go to STEP 3. Otherwise, you have to do STEP 1 and 2 to make the ASM installation diskette from the DD file in the ASM package CD-ROM.

1. Mount the CD-ROM drive. For example, you mount the CD-ROM to `/mnt`.
2. Insert an empty 1.44MB diskette into your floppy drive and execute command:

```
# dd if={PATH}/asmuw.dd of=/dev/rdisk/f03ht
```

Here, {PATH} denotes the directory under which `asmuw.dd` is located. For example, `/mnt/UnixWare`.

3. Insert the ASM installation diskette into your floppy drive and at the shell prompt execute this command to begin ASM installation.

```
# pkgadd -d diskette1 asm
```

If the UnixWare Desktop environment is available, do the following steps:

1. Mount the CD-ROM drive. For example, you mount the CD-ROM to `/mnt`.
2. Insert an empty 1.44MB diskette into your floppy drive and execute command:

```
# dd if={PATH}/asmuw.dd of=/dev/rdisk/f03ht
```

Here, {PATH} denotes the directory under which `asmuw.dd` is located. For example, `/mnt/UnixWare`.

3. From the `Admin_Tools` folder, double click on the `App_Installer` icon to invoke the `PackageMgr`.

-
4. Select the Install From: item as Disk_A and press the Update Viewbutton.
 5. From the package list, click on the asm icon, then press the Installbutton.

The installation process will copy ASM agent package into the /usr/asm directory, and automatically make necessary modifications to system configuration files:

```
/etc/netmgt/snmpd.comm
```

```
/etc/netmgt/snmpd.peers
```

```
/etc/inittab
```

After the installation is successfully completed, the ASM agent can be manually started by executing command:

```
# /usr/asm/asmsmuxd
```

or it will automatically be started on the next system reboot.



Before starting ASM SMUX Agent `asmsmuxd`, you should execute ASM Agent Configuration Utility `asmcfg` to configure at least "SNMP", "ASM_Password" and other parameters. Refer to Chapter 8.2 ASM Agent Utilities for detail instructions on using ASM Configuration utility.

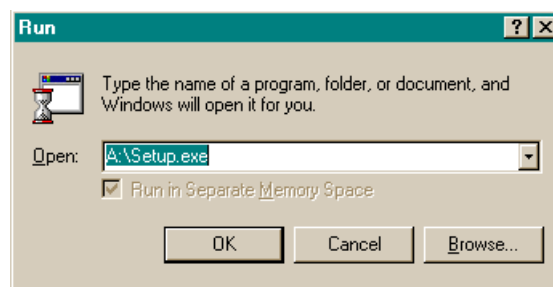
1.2.4 Windows NT Agent Installation



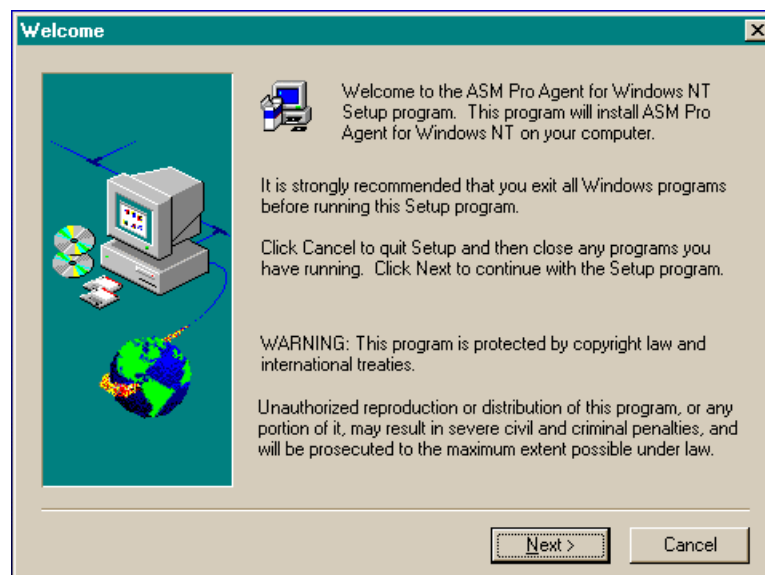
Before installing ASM software, make sure that TCP/IP and its related SNMP service are installed on the server.

Follow these steps to install the Windows NT agent.

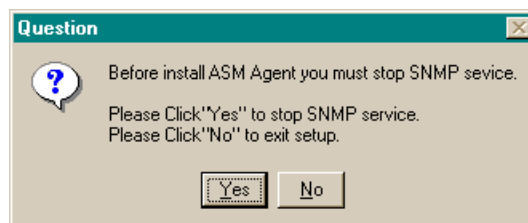
1. Insert installation disk #1 into your drive after booting NT and logging in as the system administrator.
2. Click on the **Start** button and select **Run**. The Run dialog box appears.



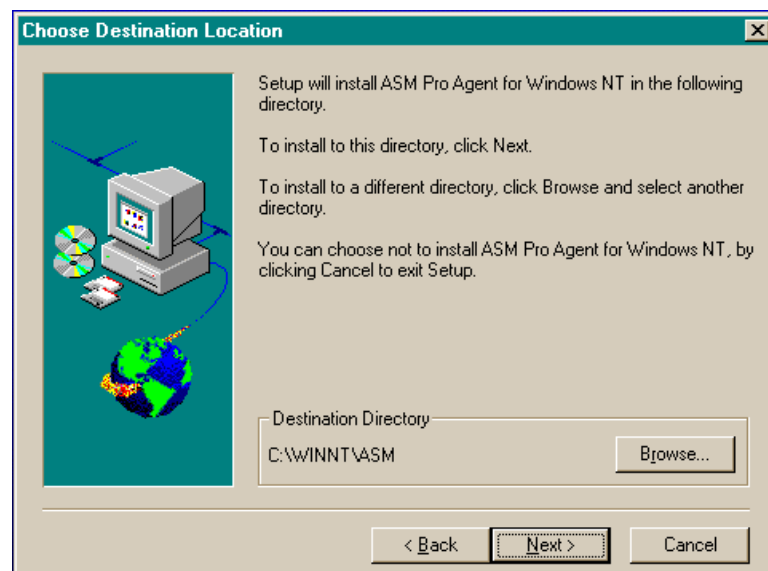
3. Verify the path and click **OK**. The Welcome screen displays.



4. Click **Next**. You will be requested to stop SNMP service.

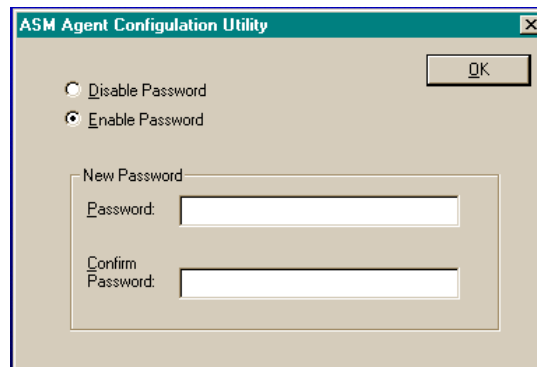


5. Click **Yes**. You will be prompted to choose a destination directory.



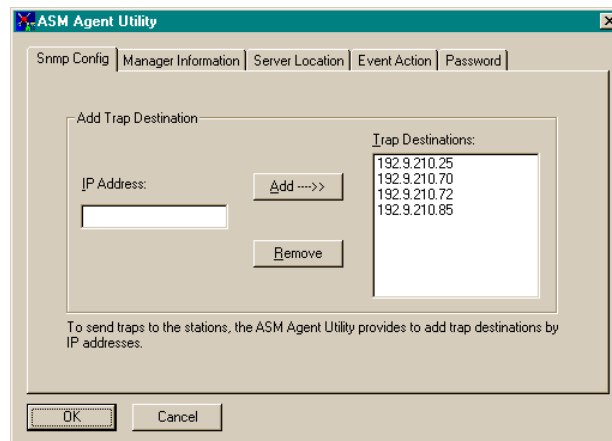
6. Click **Next**, for the default directory or click on Browse to find your own destination directory. Insert Setup Disk #2 when prompted.

7. Click **OK**. The *asmcfg* utility launches automatically.

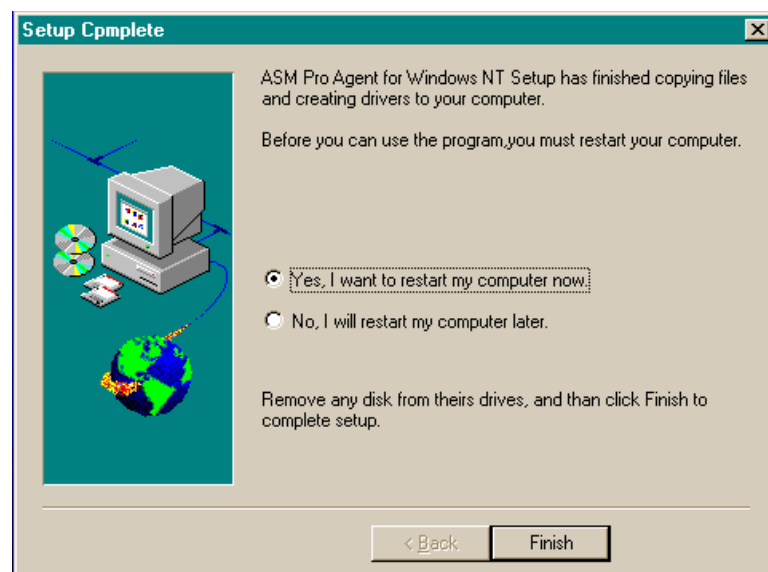


You may skip steps 8 through 11 if you are installing ASM-Agent solely for the purpose of utilizing UPS and/or RDM functions.

8. Enter a password then click **OK**. The password will be required when using the ASM-Station to remotely change or set any value for the NT Agent, such as threshold values and any event handling options. If the password is disabled, there will be no security protection for the agent when the station tries to change or set these values.



9. Enter the IP address of the ASM-Station then click **ADD** to add trap destinations. Click **OK** to end the *asmcfg* utility. This IP address tells the Agent where to report (trap).
10. Click **Yes** to save your modification; otherwise, click **No**. Next the view Readme file dialog box appears.
11. Click **Yes** to view, **No** to continue.



12. Click **Finish** to exit setup.

1.3. Uninstalling ASM Pro

1.3.1 Uninstalling ASM-Station

1. From the Control Panel window, select **Add/Remove Programs**.
2. Highlight **ASM-Station Pro**, then click on **Add/Remove**.
3. Click **Yes** to confirm that you wish to remove ASM-Station. When the uninstall is complete, the message "Uninstall Successfully Completed" displays.
4. Exit the Add/Remove Programs Properties window.

1.3.2 Uninstalling ASM-Agent (NetWare)

1. Run the ASM-Agent utility *asmcfg*. See "*asmcfg* for NetWare" in Chapter 7 for more information about the *asmcfg* utility.
2. Select the **uninstall** option to remove the NetWare ASM-Agent.

1.3.3 Uninstalling ASM-Agent (SCO OpenServer)

1. Login as root on the server.
2. Click on **Software Manager** (if you are in the desktop window), or execute **custom** if you are at the UNIX shell prompt.
3. Highlight the ASM-Agent product package.
4. Select **Software Remove** from the Software menu.
5. Hit the return key, then confirm the removal when prompted.
6. You must reboot the system to activate the new kernel.

1.3.4 Uninstalling ASM Agent (Sco UnixWare)

1. Login as root on the server.
2. At the shell prompt, execute command:

```
# pkgrm asm
```
3. Enter **Yes** to confirm the removal when prompted.

1.3.5 Uninstalling ASM-Agent (Windows NT)

1. Select **Programs** ⇒ **ASM Pro Agent** ⇒ **Uninstall ASM-Agent**.
2. Click **Yes** to confirm the uninstallation.
3. Click **Yes** to stop SNMP service.
4. Exit the uninstall program.
5. Reboot the system.