

## **Chapter 2**

# ***Getting Started***

---

This chapter describes how to use ASM Pro for the first time. The chapter has been divided into categories based on ASM Pro's major functions.

The ASM-Station toolbar contains buttons for the most commonly used features. This chapter describes how to load the ASM-Agents and how to run ASM-Station and navigate through its functions. You should have already installed ASM-Agent on the server(s) to be monitored, and ASM-Station on the monitoring client. If you have not installed these already, see Chapter 1, Installation, for more information.

## **Running ASM-Agent**

ASM-Agent starts automatically after the server is up and running.

---

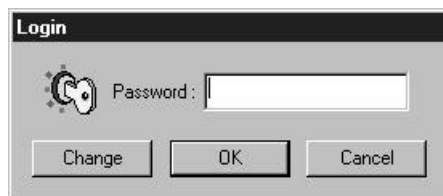
## Running ASM-Station

Under Windows, select **Programs** ⇒ **ASM Pro**. If you are using ASM-Station for the first time, the password login dialog box appears. You are required to initialize a password. This password gives you access to the ASM-Station.



Enter a password in the New Password field. Re-type the password in the Confirm field. Click **OK**.

From now on, you will see the following dialog box every time ASM Pro is launched:



Enter your password in the Password field, then click **OK**.



*Do not confuse this password with the **Agent** password. See Chapter 7, ASM Pro utilities, for information on how to create an Agent password.*

---

If you are running ASM Pro for the first time, you will see the Auto Discovery window. Refer to the Auto Discovery section in Chapter 3, Server Information, for details.

## Changing Your Password

You can easily change your old password by clicking **Change** in the Login dialog box and the Change Password dialog box appears.

A screenshot of a 'Change Password' dialog box. The dialog box has a title bar that says 'Change Password'. Inside, there are three text input fields labeled 'Old Password:', 'New Password:', and 'Confirm:'. Below the input fields are two buttons: 'OK' and 'Cancel'.

To change your password:

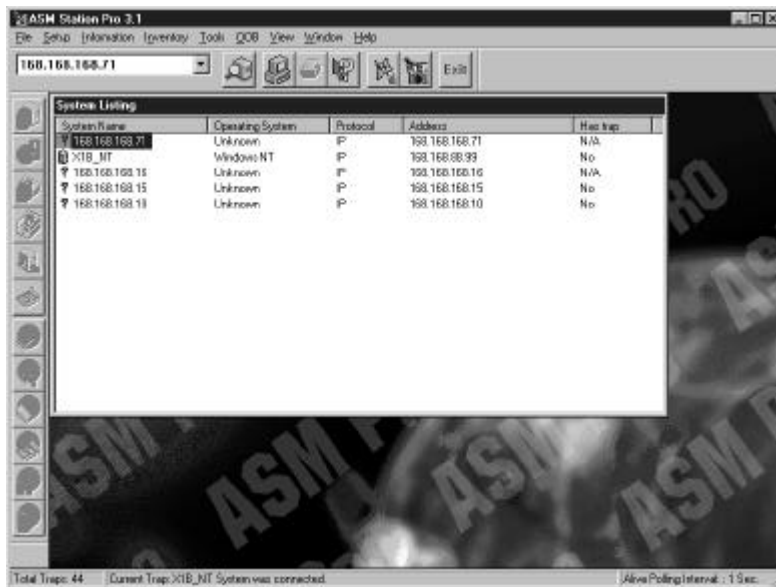
1. Type your old password in the Old Password field.
2. Type your new password in the New Password field then retype the new password in the Confirm field.
3. Click **OK** to accept the new password. After the program confirms the password change, a dialog box appears with the message "Password change successfully."

The new password you entered is now in effect. Every time you run ASM-Station from now on, you will be prompted to enter this password.

---

## ASM-Station User Interface

The ASM-Station user interface allows you to view numerous windows at the same time. As such, you can compare the performance of different servers on your network by displaying information about each server on the screen simultaneously. A typical System Listing screen displays the following information: System Name, Operating System, Protocol, Address, and Has Trap.



This screen displays each time ASM Pro is launched (if the monitoring servers were added through Auto Discovery the first time ASM Pro was launched).

To display information about a server, click on the server's name under the System Name column, then use the icons at the left of the screen or the menu bars on the top of the screen to display additional information about the selected server. See Appendix A for a brief description of the Menu Bar and Toolbar buttons.

---

## Server Information

The first category, Server Information, allows the user to select available servers for monitoring, and to add and delete servers as the need arises. Server Information is discussed in Chapter 3:

- **Auto Discovery.** Used to add or delete a server from the server list to be monitored by ASM-Station.
- **Server Listing.** A list of available servers appears, along with the server's operating system type, protocols, addresses, and traps.

## Configuration Information

Information pertaining to the actual configuration of the servers. See Chapter 4 for more. Topics discussed include:

- **Server System Information.** Information about a selected server, such as server name, OS name, product name, and drivers used.
- **System Hardware Configuration.** System configuration information about the processor, BIOS, and memory for the selected server.
- **Storage Subsystem Information.** Information about the type of hard disk being used to store data.

- 
- **I/O Devices Information.** Information about system I/O devices.
  - **Network Controller Information.** Network interface card information.

### **Performance Monitoring**

This section describes how to monitor server system performance, and what types of monitoring are available. Chapter 5 contains a detailed discussion of performance monitoring, including:

- **Processor Utilization.** CPU utilization information.
- **PCI Bus Utilization.** PCI bus utilization information. Threshold settings for the PCI bus may also be changed from ASM-Station (for some models only).
- **Memory Utilization.** System memory utilization information. Threshold settings for memory utilization may also be changed from ASM-Station.
- **NIC Utilization.** Network interface card data transmission utilization information.
- **Redirected Blocks.** Available only with NetWare.
- **NIC Fault.** Network interface card fault information.
- **File System Utilization.** File system utilization information. Threshold settings for file system may also be changed from ASM-Station.
- **Disk Utilization.** SCO OpenServer, SCO UnixWare, and Windows NT only. Information about disk efficiency and performance. Redirected block information is shown if you have a NetWare server.
- **BIOS Event Log Utilization.** Server system event log information.

---

## Fault Management

Fault management allows ASM Pro to check for hardware errors and check threshold values of monitored agents. ASM Pro can notify the system administrator when a problem occurs, or even shut down the server to protect against further damage. Chapter 6 explains fault management in detail:

- **Hardware Environment.** This displays the hardware environment of the server in these areas: system voltage, temperature, fan status or CPU voltage. When a hardware error in these areas is detected, a trap is generated by the ASM-Agent to the ASM-Station, which then records the trap in a log file.
- **Event Notification and Threshold Setting.** Based on the trap error type, the system administrator may specify how to handle the trap; such as notifying the system administrator and/or shutting down a certain server.

## ASM Pro Utilities

ASM Pro utilities provide you with tools to change passwords, set up trap configurations, and change address settings. These utilities are available at both the ASM-Station and the ASM-Agent. Chapter 7 describes ASM Pro Utilities in detail.

- ASM-Station. Utilities include printing and online help.
- ASM-Agent. The *asmconfig* utility allows the user to change the password, set threshold values, and select the action to be taken in the event of a trap. Actions that can be selected include: shut down the server, execute a user-defined program, or broadcast a warning message. A password is always required whenever changes are made to the Agent server.