

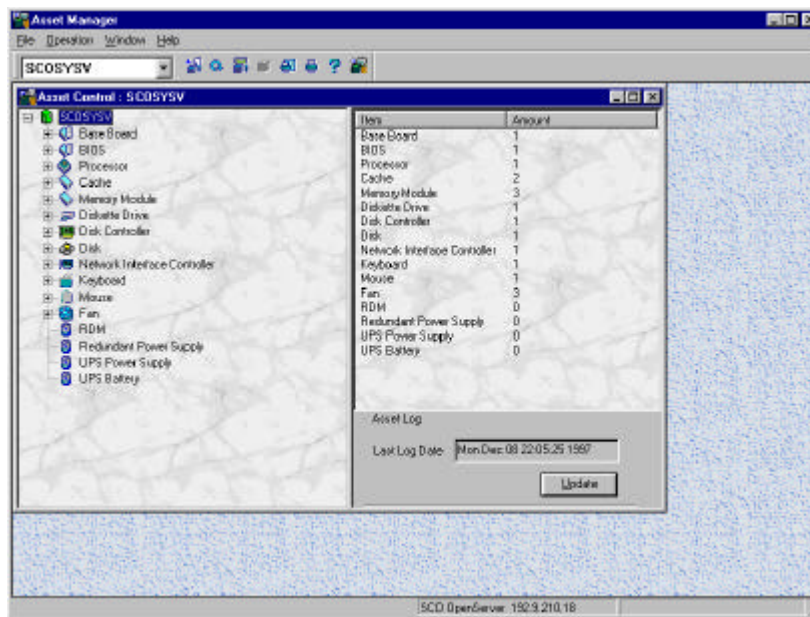
Asset Manager gathers information concerning the system configuration of each server or desktop being monitored by the ASM Station. This information is then saved in a log file for future reference. Asset Manager consists of two parts: Asset Control and Asset Statistics Information.

- Asset Control shows you the hardware configuration of the server or desktop currently being monitored. It also allows you to save the current configuration of that server or desktop into a log file.
- Asset Statistics Information summarizes the hardware information contents of two or more servers or desktops.

## Asset Manager User Interface

This section discusses these major screen components:




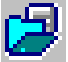




- Menu bar and Toolbar
- Machine List Combo Box



### Menu Bar and Toolbar

The Toolbar buttons enable quick access to selected functions in Asset Manager through a single mouse click. You can also access these functions in the menu bar.



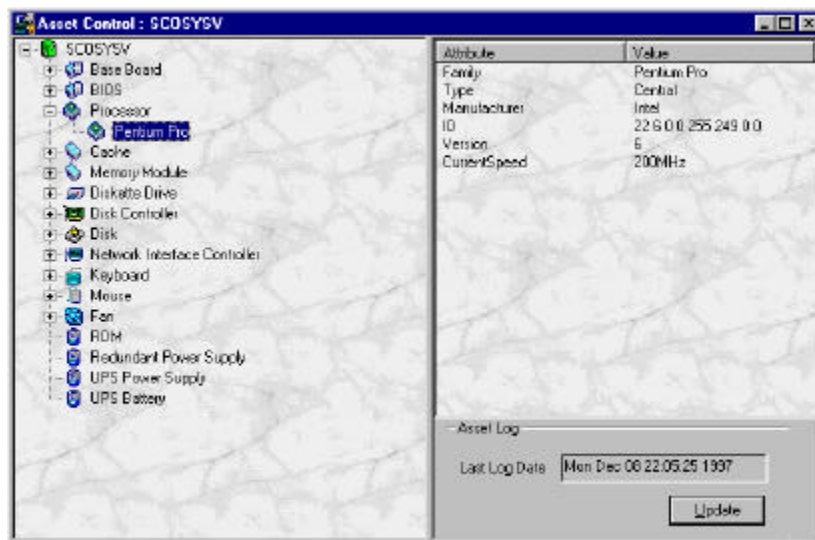
Icon	Descriptions
	<b>Get Asset Information.</b> Activates the Asset Control window and displays information about the currently monitored server or desktop.
	<b>Refresh.</b> Refreshes the display of information in the active window.
	<b>Statistics.</b> Activates the Asset Statistics Information window and displays hardware summary information about the server(s) or desktop(s) chosen.
	<b>Query.</b> Activates the Asset Information Query window and helps you find what you are looking for.
	<b>Preview.</b> Displays the layout and format of information to be printed.
	<b>Print.</b> Prints information concerning the server or desktop currently being monitored.
	<b>Help.</b> If you don't know what to do, click here.
	<b>About.....</b> Credits, etc.

## Machine List Combo Box

Use this box to select the name of the machine whose assets you want to view. The Machine List Combo Box contains all the servers and desktops available for monitoring.

## Asset Control

The Asset Control window will display automatically every time you activate Asset Manager. It will display the currently monitored server or desktop along with its hardware configuration as shown below. Clicking on an item with a plus (+) sign will show you one or more devices available for that item.




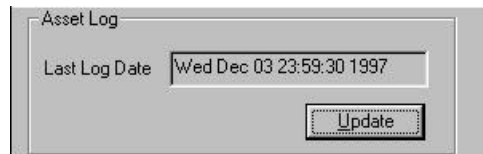
Asset Control also monitors the hardware changes within the system. It compares the devices currently installed in the system and the one recorded in the log file. A question mark icon will be displayed on the item icon if it detects any changes like installation of a new device and replacing or removing of old devices.

Once a change has been made, it will indicate the number of devices that have been removed or installed in the system. For example, 0 to 1 means that a device has been added to the system. On the other hand, 1 to 0 means that a device has been removed.

---

## Saving Hardware Information to the Log File

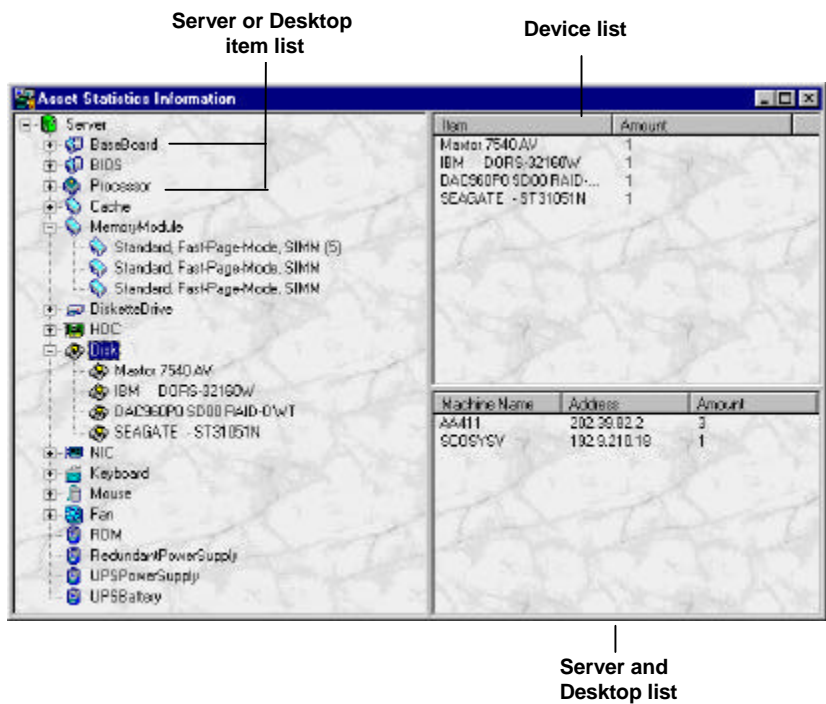
The question mark  on the item icon will display every time a device is installed, replaced or removed within the system. You can save these changes by clicking on the **Update** button of the Asset Log dialog box.



The Asset Log will automatically update the log file and display the date and time of the latest update.

# Asset Statistics Information

The Asset Statistics Information window collects the total number of devices installed in a server or desktop and displays them for your reference. You can choose one or more servers or desktops at the same time as shown below.




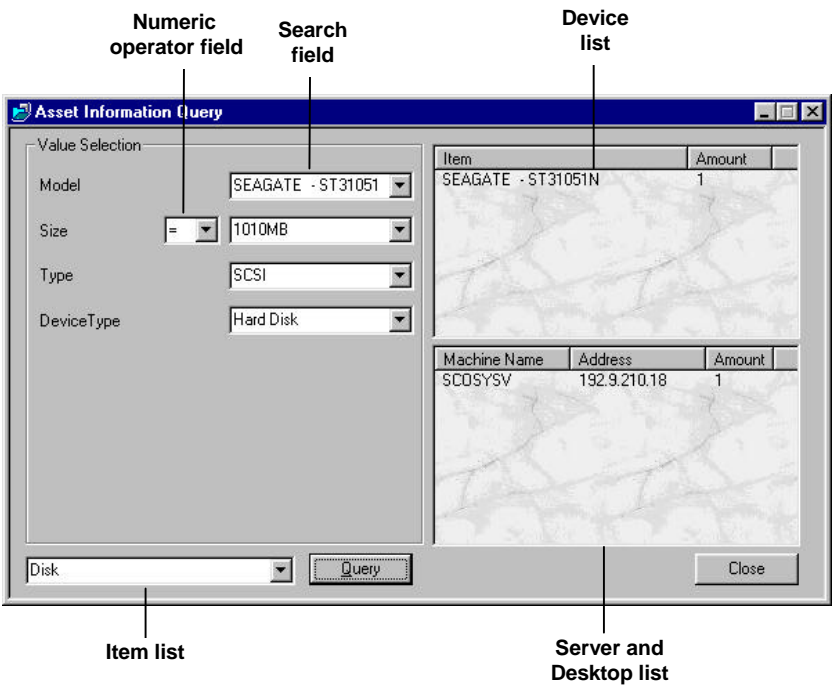
The left window displays all the items currently available to all the servers or desktops being monitored. Clicking an item with a plus (+) sign will show you the kind of device and the sum number of that device installed in the servers or desktops being monitored.

---

The upper right side of the screen displays more detailed information about the type of device and the sum number of that device. The lower right side displays the servers or desktops currently being monitored. Click on one of the systems and it will show you the number of devices installed in that particular system.

# Asset Information Query

The Asset Information Query is a search function that helps you find what you need. It can only be activated in the Asset Statistics Information window. Choose an item in the Asset Statistics Information window and click the Asset Information Query icon  on the toolbar to activate the window below.



The screenshot shows the 'Asset Information Query' window. It has a title bar with standard window controls. The main area is divided into two panes. The left pane, titled 'Value Selection', contains four dropdown menus: 'Model' (set to 'SEAGATE - ST31051'), 'Size' (set to '1010MB' with a '=' operator selected in a small dropdown), 'Type' (set to 'SCSI'), and 'DeviceType' (set to 'Hard Disk'). Below these is a 'Disk' dropdown and a 'Query' button. The right pane displays two tables. The top table, labeled 'Device list', has columns 'Item' and 'Amount' and contains one row: 'SEAGATE - ST31051N' with an amount of '1'. The bottom table, labeled 'Server and Desktop list', has columns 'Machine Name', 'Address', and 'Amount' and contains one row: 'SCQSYSV' with address '192.9.210.18' and amount '1'. A 'Close' button is at the bottom right. Labels with leader lines point to the 'Numeric operator field' (the '=' dropdown), the 'Search field' (the 'Model' dropdown), the 'Device list' (the top table), the 'Item list' (the 'Disk' dropdown), and the 'Server and Desktop list' (the bottom table).

Item	Amount
SEAGATE - ST31051N	1

Machine Name	Address	Amount
SCQSYSV	192.9.210.18	1

The left side of Asset Information Query lists a number of fields that are associated with the type of item you chose. You will encounter two types of fields in this window: search fields and a numeric operator field.



---

The search fields specify the device you want to find in the servers or desktops being monitored. You can type in the device name or number and click **Query**. Asset Query will display anything that matches your search items in the device list window.

The numeric operator field is used when you encounter a numeric input such as the capacity of a hard disk drive. This field contains three logical operators: equal to (=), greater than (>), and lesser than (<) operators. Choose one of the operators and type in the capacity of the device you want to find and click **Query**. Asset Query displays anything that matches your search items in the device list window.

The item list box lists all the available items allocated to the servers and desktops being monitored. Click on the pulldown menu to see a list of items available and click one of them to search a device in that item.