

Event Viewer

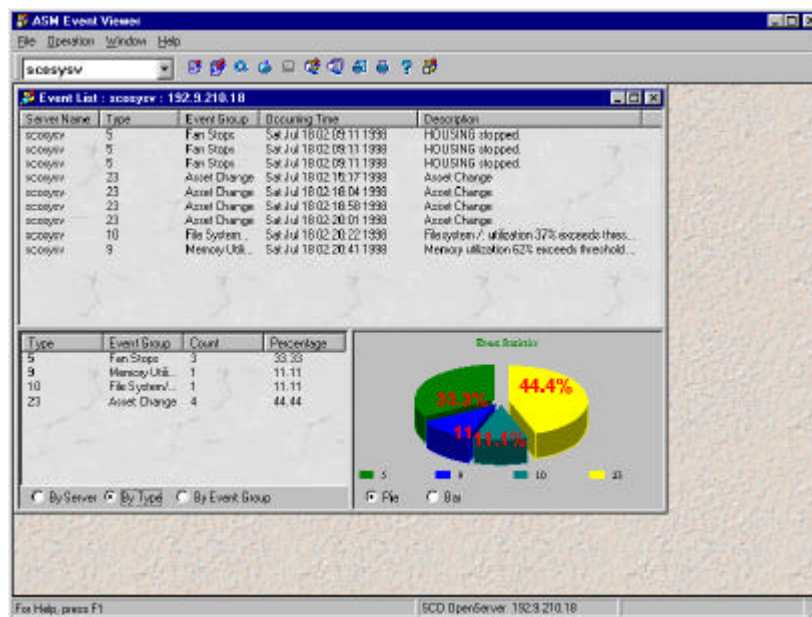
8

Event Viewer gathers information about events in the system being monitored by the ASM Manager Station. This information is then saved in the event log file for future reference.

Event Viewer User Interface

This section discusses these major screen components:












- Menu bar and Toolbar
- Machine List Combo Box



Menu Bar and Toolbar

The Toolbar buttons enable quick access to selected functions in Event Viewer through a single mouse click. You can also access these functions in the menu bar.



Icon	Descriptions
	Retrieve Event. Displays event log information of the current monitored machine.
	Retrieve Multiple Event. Displays event log information of two or more monitored machines.
	Refresh. Refreshes the display of information in the active window.
	Load Event Log. Displays the previously saved event log file.
	Save Event Log. Saves event log information to disk.
	Save to Text File. Saves event log information to a plain text file.
	Event Viewer Setup. Enables and disables the graphic display in the event list window.
	Event Group Setup. Displays the setup window for Event Viewer.
	Preview. Shows the format display before printing.
	Print. Prints event log lists.
	Help. If you don't know what to do, click here.
	About..... Credits, etc.

Machine List Combo Box



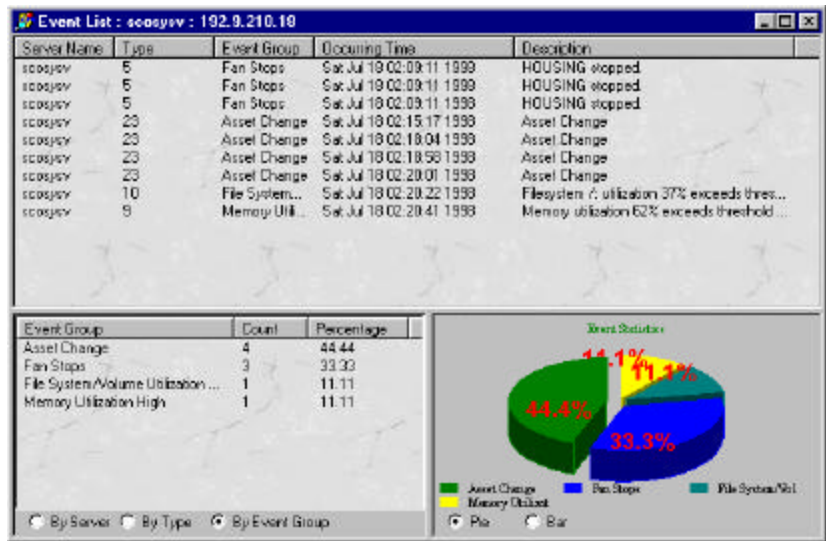
Use this box to select the name of the machine whose event log you want to view. The Machine List Combo Box contains all the servers and desktops available for monitoring.

Saving and Loading Event Log File

You can save the event log for future reference by clicking the **Save Event Log** button. Event Viewer will save the file with a .evt extension. Click the Load Event Log to view these files in the future. You can also save the event log to a plain text file by selecting the command from the file menu.

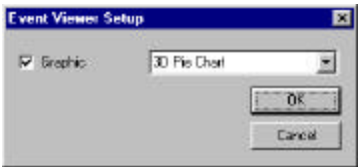
Retrieving Single Event Log Information

Click the Retrieve Event button to display the Event List window. The Event List window displays currently retrieved events from the server or machine being monitored. The upper window shows the server name, type of event group, event group name, time occurred, and a brief description of the event.



The lower window shows a summary of event occurrences shown according to event group type and a graphic presentation of those events. You can change this display by clicking on the button below the window.

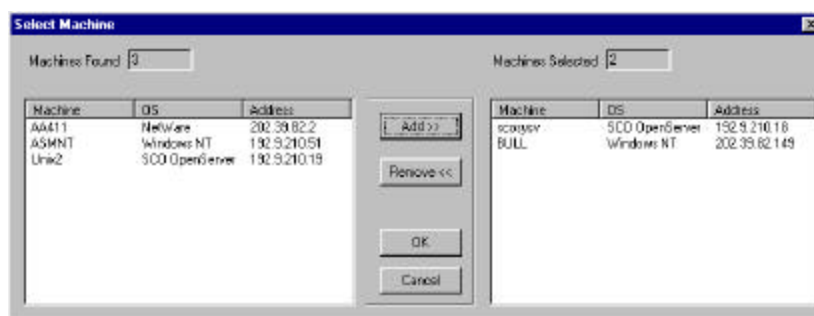
The **Event Viewer Setup** button sets the default graph display in this window. The dialog box below appears:



You can enable or disable the graph display by clicking on the Graphic check box.

Retrieving Multiple Event Log Information

To retrieve multiple events, click the Retrieve Multiple Events button. The Select Machine window displays:



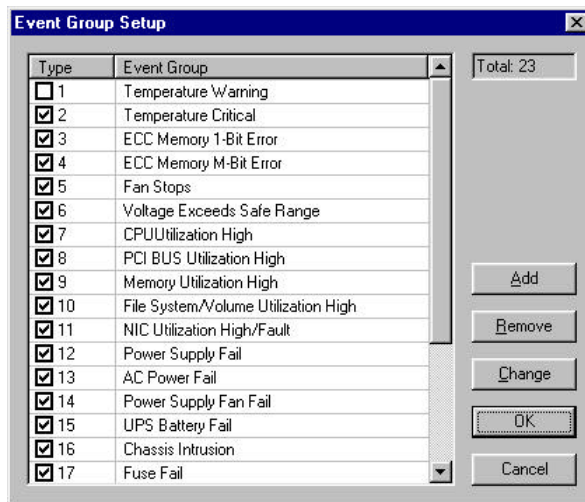
Event Viewer searches for available machines and lists them down on the Machines Found category. Click the machines you want to view and then click **Add>>** to collect event information about the machine(s) you selected.

To remove any machine from the Machines Selected category:

1. Click the machines you want to remove and click the **Remove<<** button.
2. Click **OK** to verify and exit the Select Machine window. Event Viewer will start retrieving data from the machines.

Event Group Setup

The Event Group Setup window allows you to configure the type of event group you want to view. You can also add, remove, or change each group and its type number.



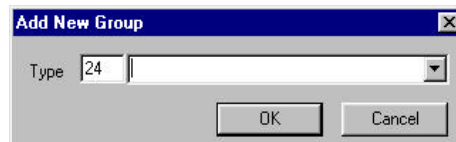
To enable or disable an event group, click on the check box. A check indicates that the event group is enable, while an empty check box indicates that it is disabled.

To add event groups:

1. Click the **Add** button, and the Add Event Group window displays.
2. Type the event group in the text box.



You must indicate a correct or existing event group; otherwise, Event Viewer will not be able to locate the event group from the server.

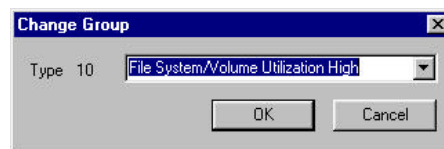


To remove event groups:

1. Highlight the event group that you want to remove.
2. Click the **Remove** button to remove the event group.

To change the properties of the event group:

1. Highlight an event group and click the **Change** button. The Change Group window appears.



2. Type in the new event group that you want to assign to the event type or choose an existing group from the combo box and click **OK**.