

# Statistics Viewer

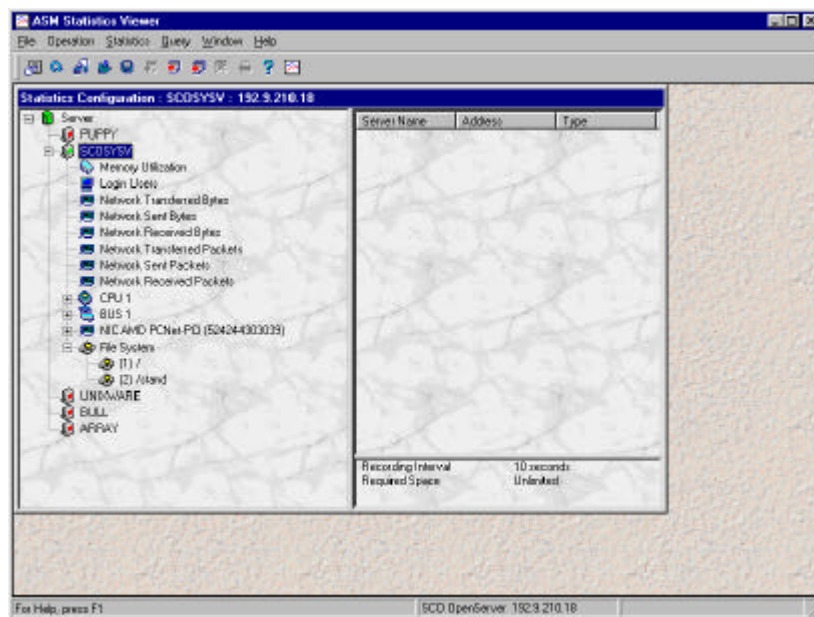
# 9

Statistics Viewer records and displays system utilization information of monitored machines. This information is then saved for future reference.

## Statistics Viewer User Interface

This section discusses these major screen components:

- Menu bar and Toolbar
- Machine List Combo Box



---

## Menu Bar and Toolbar

The Toolbar buttons enable quick access to selected functions in Statistics Viewer through a single mouse click. You can also access these functions in the menu bar.



Icon	Descriptions
	<b>Bring up Statistic Configuration.</b> Used when you have multiple windows open. Brings the Statistic Configuration window to the front.
	<b>Refresh.</b> Refreshes the display of information in the active window.
	<b>Setup Statistic Item.</b> Displays the setup window.
	<b>Open Query.</b> Displays the previously saved query file.
	<b>Save Query.</b> Saves new query file information to disk.
	<b>Add Item.</b> Adds an item to the viewing window.
	<b>Remove Item.</b> Removes an item from the viewing window.
	<b>Remove All.</b> Clears the viewing window.
	<b>View Statistic Info.</b> Displays the Statistics Graph View window.
	<b>Print.</b> Prints query files.
	<b>Help.</b> If you don't know what to do, click here.
	<b>About.....</b> Credits, etc.

---

## Recording Utilization Information

You have to configure items that you want to be recording. To do this, highlight a service agent then open the Setup window by clicking the **Setup** button. The Setup window appears.



The item window shows the items that can be recorded. The record status column indicates whether the item is being processed or not.

To activate an item for recording:

1. Highlight the item or items you want to record and then click **Record**. You will notice that the record status has changed to Recording.
2. Click **Start** to start the recording process.

---

To deactivate an item or items, highlight the item or items and click **Not Record**. This will change the items record status to N/R (Not Recording).

## Recording Parameters

Sets the recording interval time and the record file size for each item that you are recording.

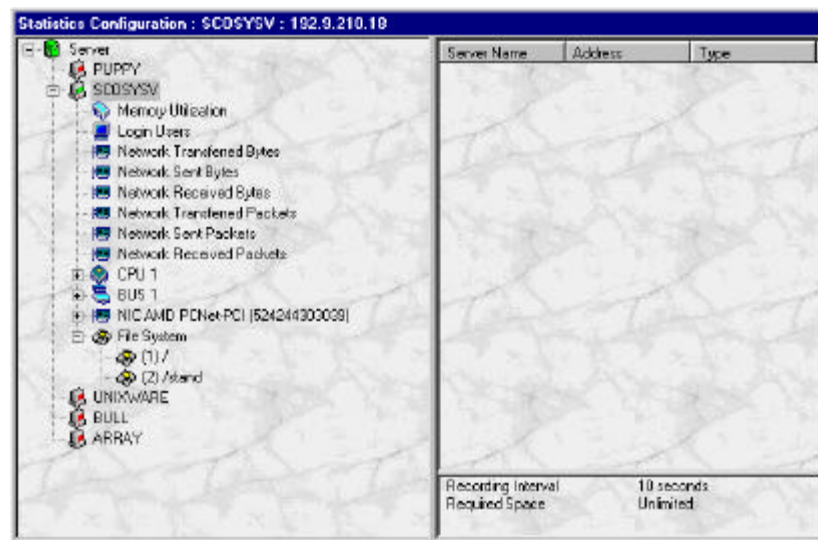
The recording interval sets the time interval for Statistics Viewer to get information from the machine being monitored. The minimum time interval is every 10 seconds while the maximum time interval is every one hour.

The record size limits the file size or record number for each item. Choose **Limited** and set the number of allowable records you want for each item. The required space will be calculated automatically. Choose **Unlimited** for unlimited time setting.

---

## Viewing Statistic Information

The Statistic Configuration window displays the available machine currently monitored. From this list you can choose which item you want to view. The right window is called the viewing window. You have to add items to the viewing window to view statistical information.



To add items to the viewing window, highlight an item in the left window and then click the **Add Item** button on the toolbar. The item you chose will be displayed in the viewing window.

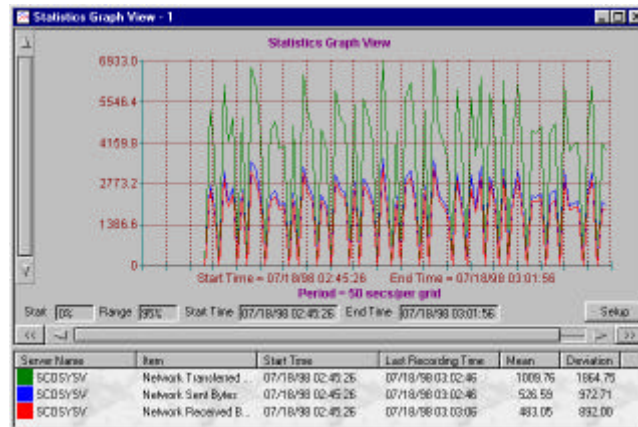
To remove an item from the viewing window, highlight an item in the viewing window and click the **Remove Item** button on the toolbar.

To clear the viewing window, click the **Remove All** button on the toolbar.

---

## Statistics Graph View

This window displays the utilization information in a line graph.



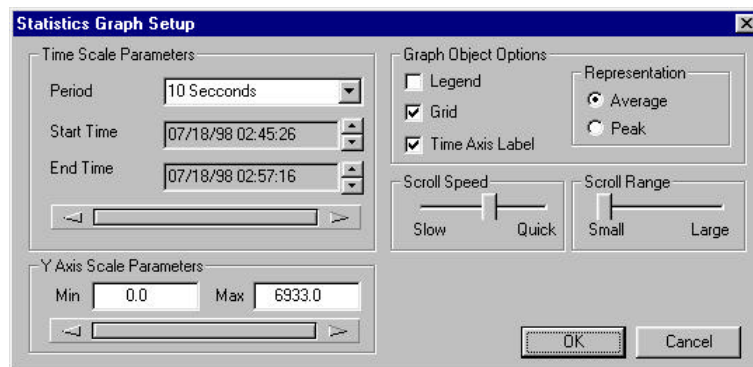
The colored lines identify with the items located below the graph. The line graph consists of two axis: y-axis (vertical) and the x-axis (horizontal). The y-axis indicates the frequency that the item is being utilized. The x-axis indicates the start and end times of utilization.

The list below the graph shows the server name, item being recorded, the start time of recording, when the recording stopped, the mean, and the deviation of utilization.

The mean measures the average utilization, while deviation measures the difference of the utilization against a fixed value.

### Statistics Graph View Setup

In the Statistics Graph View window click **Setup** to change settings. The Statistics Graph View Setup window appears.



The Time Scale Parameters set the time periods allocated between each grid (x-axis) in the graph chart. The display bar at the bottom of this parameter focuses the graph display to a limited time frame.

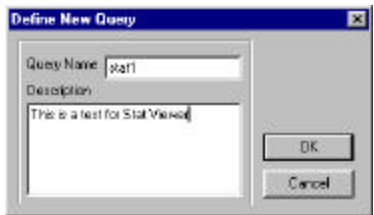
The Y-axis Scale Parameters set the minimum and maximum values for the Y-axis (vertical). The display bar at the bottom of this parameter focuses the graph display to a limited performance frame.

You can also enable and disable the legend, grid, and time axis labels in the graph. To enable or disable these properties, just click the check box in the Graph Object Options. You can also choose to display the average or peak performance of each item in the graph. Click either one of the parameters in the Representation box.

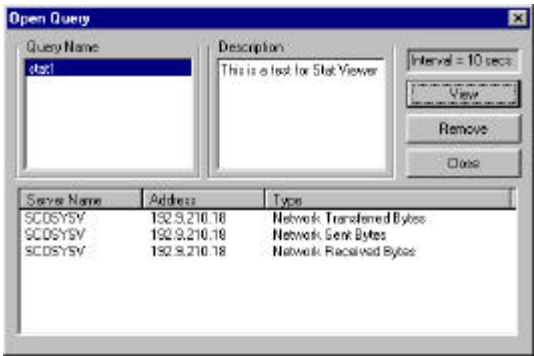
---

## Saving and Loading Query Files

Statistics Viewer records the system utilization information of each machine being monitored. You can then save these records for future reference. To save query files, click the **Save Query** button after you have recorded utilization information. Statistics Viewer will ask you to define a name and a description for the query.



To load a save query, click the **Open Query** button. The Open Query window appears.



Choose the file you want to view by highlighting it and then click the **View** button. The **Remove** button erases the files and **Close** button closes the window.