

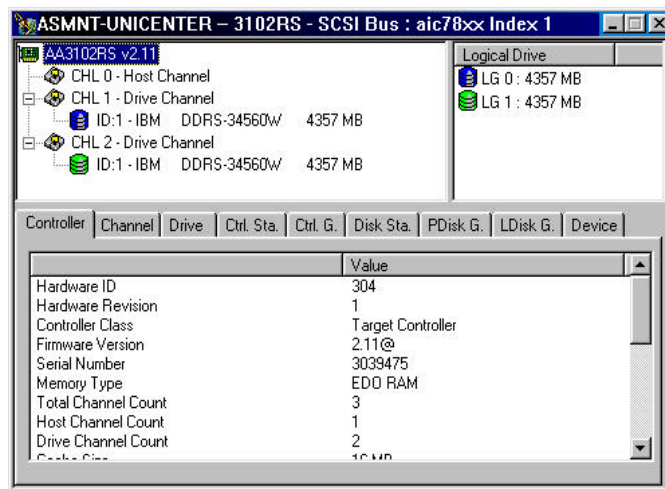
AcerAltos 3102RS Utility

C

The basic idea behind Redundant Array of Inexpensive Disk (RAID) was to combine multiple small, inexpensive disk drives into an array of disk drives which yields performance exceeding that of a Single Large Expensive Drive (SLED). This array of drives appears to the computer as a single logical storage unit or drive. This utility monitors the RAID Controller information and functions. The sections below give a brief description of the utility.

AcerAltos 3102 RAID Controller Monitor Window

This window is used to monitor the AcerAltos 3102 RAID Controller information. The upper left window displays the hierarchical view of the controller structure, and the upper right window shows the logical drive information.



Controller Tab

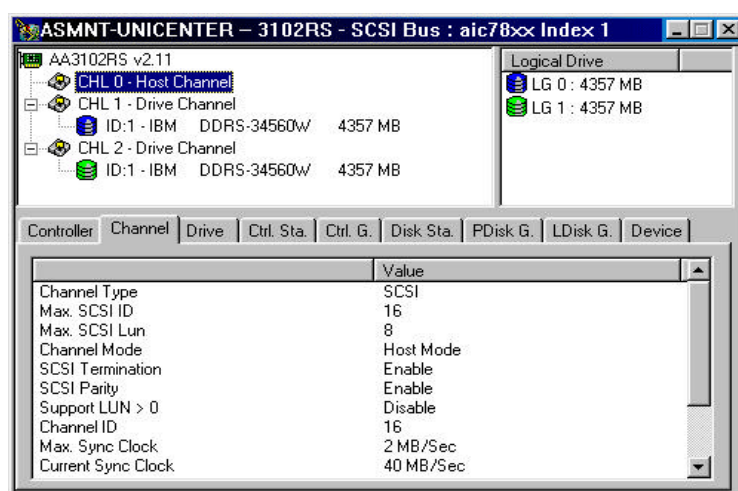
This window is used to monitor the AcerAltos 3102RS RAID Controller Information. Under this tab to displayed information as shown below:

Terms	Description
Hardware ID	RS3102 Hardware ID
Hardware Revision	Hardware Revision Number
Controller Class	Controller status
Firmware Version	Firmware version
Serial Number	Serial number
Memory Type	Type of Memory
Total Channel Count	Number of All Channels
Drive Channel Count	Number of Drive Channels
Host Channel Count	Number of Host Channels
Cache Size	Cache Size of Controller
CPU Type	CPU Type of controller
Mode Flags	Mode Flags
Current Baudrate	Current RS232 Baud Rate
Max Support Logical Volume Count	Maximum Support Logical Volume Count
Current Support Volume Count	Current Support Volume Count
Max Support Logical Drive Count	Maximum Support Logical Drive Count
Current Support Drive Count	Current Support Drive Count
Max Support Partition / Volume	Maximum Support Partition / Volume
Current Support Partition / Volume	Current Support Partition / Volume
Max Support Physical Drives / Logical Drive	Maximum Support Physical Drives / Logical Drive

Terms	Description
Max Support Physical Drives / Logical Drive	Maximum Support Physical Drives / Logical Drive

Channel Tab

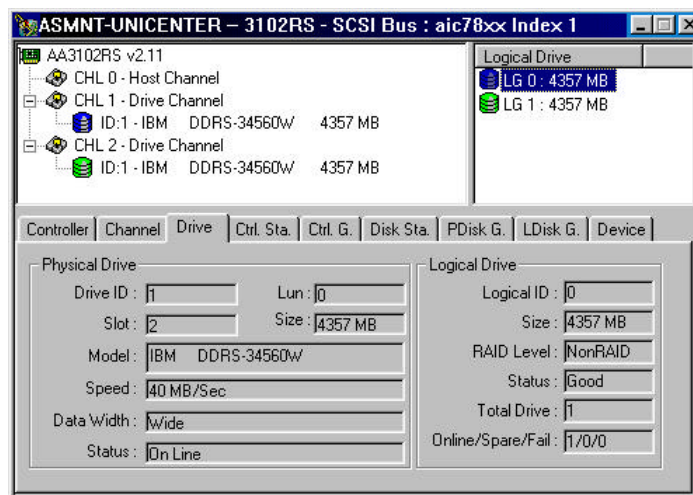
This window is used to monitor the AcerAltos 3102RS RAID Controller Channel Information.



Terms	Description
Channel Type	The Channel Type
Max SCSI ID	The maximum SCSI ID
Max SCSI Lun	The maximum SCSI Lun number
Channel Mode	The channel mode
SCSI Termination	SCSI Termination status
SCSI Parity	SCSI Parity status
Support LUN > 0	Support LUN > 0 status

Terms	Description
Channel ID	Channel ID
Max. Sync Clock	The maximum synchronous clock
Current Sync Clock	The current synchronous clock
Max. Sync Offset	The maximum synchronous offset
Current Sync Offset	The current synchronous offset
Max. Data Width	The maximum data width
Current Data Width	The current data width

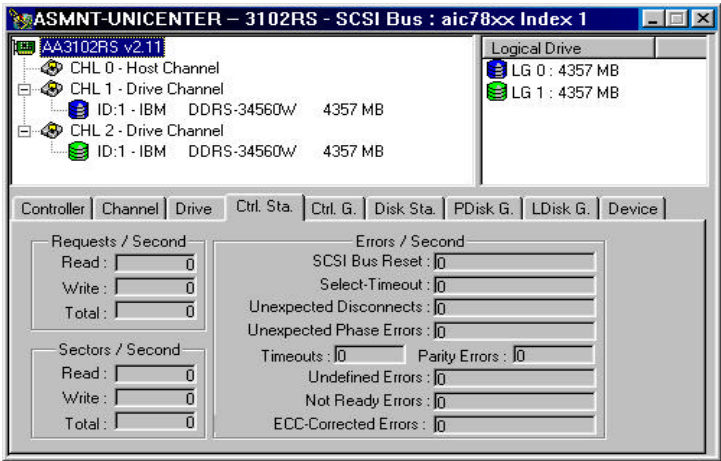
Drive Tab



This window is used to monitor the AcerAltos RAS700 RAID Controller Drive information. The displayed information is as shown below:

Terms	Description
Physical Drive	
Drive ID	The drive ID
Lun	The Lun number
Slot	The slot number
Size	Drive Size in MB
Model	Model Name
Speed	Access Speed
Data Width	Drive Data Width
Status	Drive Status
Logical Drive	
Logical ID	Logical ID
Size	Logical drive Size in MB
RAID Level	RAID Level
Status	Logical Drive Status
Total Drive	Number of total physical drive
Online/Spare/Fail	Physical drive status

Controller Statistic Tab

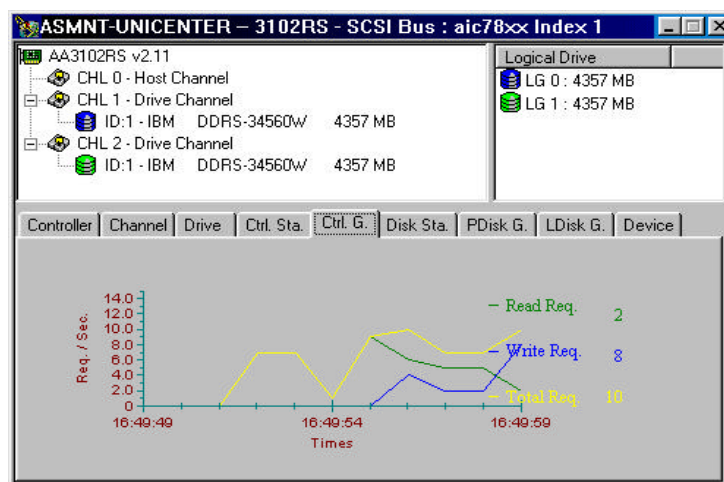


This window is used to monitor the AcerAltos 3102RS RAID Controller Statistic information. The displayed information is as shown below:

Terms	Description
Requests / Second	
Read	Read request count per second
Write	Write request count per second
Total	Total request count per second
Sectors / Second	
Read Request	Read sector count per second
Data Read	Write sector count per second
Write Request	Total sector count per second
Errors / Second	
SCSI Bus Reset	SCSI Bus Reset per second
Select-Timeout	Select-Timeout per second

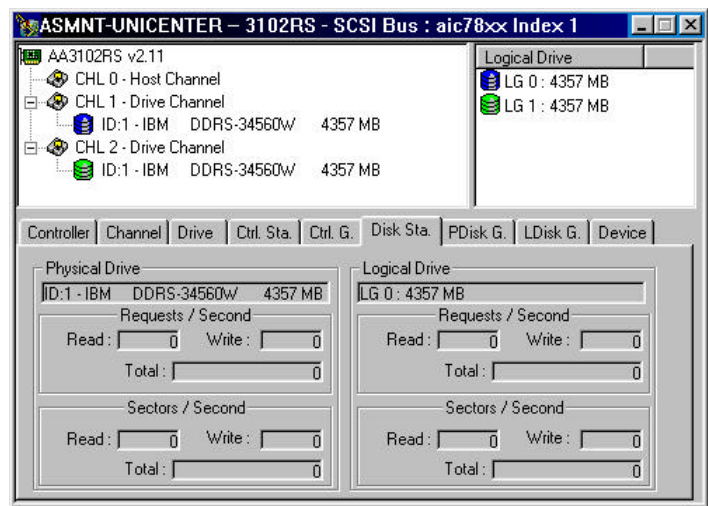
Terms	Description
Errors / Second	
Unexpected Disconnect	Unexpected Disconnect per second
Unexpected Phase Error	Unexpected Phase Error per second
Timeouts	Timeouts per second
Parity Errors	Parity Errors per second
Undefined Errors	Undefined Errors per second
No Ready Errors	No Ready Errors per second
ECC-Corrected Errors	ECC-Corrected Errors per second

Controller Statistic Graph Tab



Terms	Description
Read Request	Read request count
Write Request	Write request count
Total Request	Total request count

Disk Statistic Tab

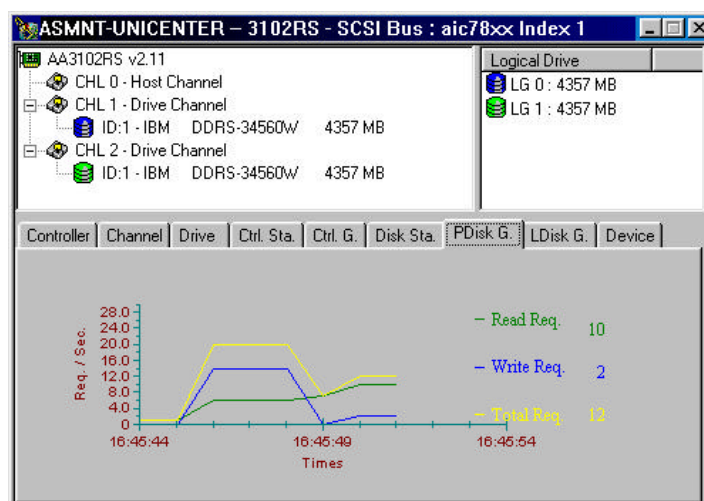


This window is used to monitor the AcerAltos 3102RS RAID Controller Disk Statistic information. The displayed information is shown below:

Terms	Description
Physical Drive / Request Seconds	
Read	Read request count per second
Write	Write request count per second
Total	Total request count per second
Physical Drive / Request Sectors	
Read	Read request count per sector
Write	Write request count per sector
Total	Total request count per sector
Logical Drive / Request Seconds	
Read	Read request count per second

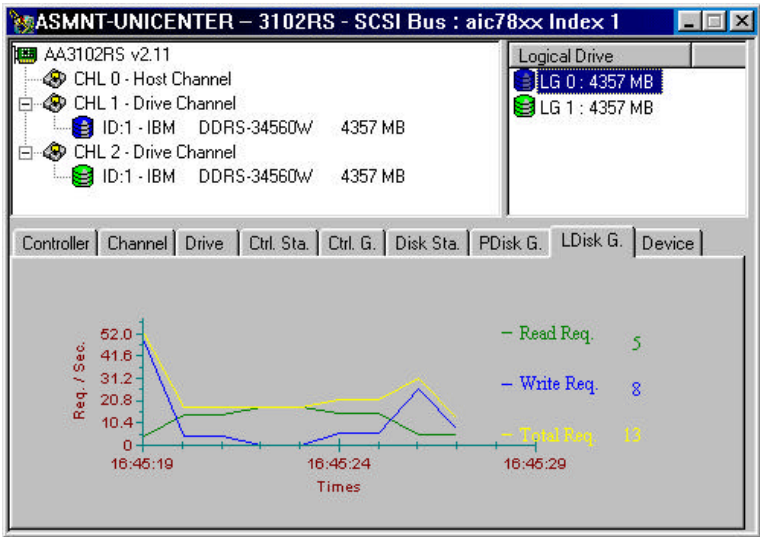
Terms	Description
Write	Write request count per second
Total	Total request count per second
Logical Drive / Request Sectors	
Read	Read request count per sector
Write	Write request count per sector
Total	Total request count per sector

Physical Disk Statistic Graph Tab



Terms	Description
Read Request	Read request count
Data Read	Data read count in MB

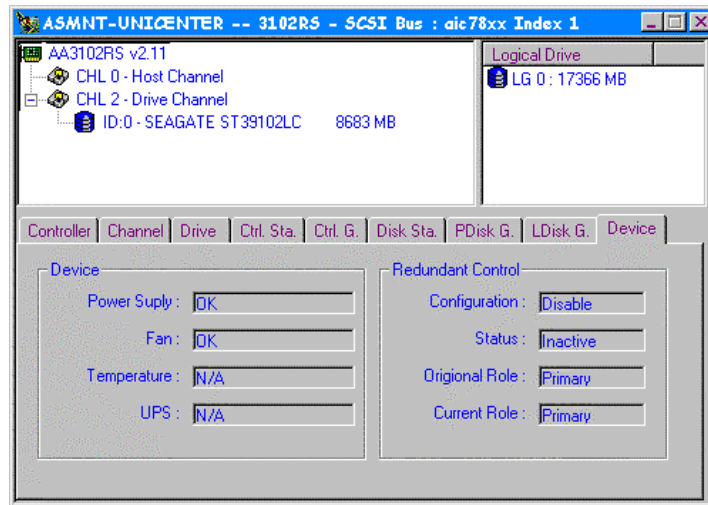
Logical Disk Statistic Graph Tab



Terms	Description
Read Request	Read request count of the logical drive
Write Request	Write request count of the logical drive

Device Tab

This window is used to monitor the AcerAltos RAS700 RAID Controller peripheral box information. The displayed information is shown below:



Terms	Description
Device	
Power Supply	Power Supply Status
Fan	Fan Status
Temperature	Currently not supported
UPS	Currently not supported
Redundant Control	
Configuration	Redundant Control Configuration
Status	Redundant Control Status
Original Role	Original Control Role
Current Role	Current Control Role