

## ***Backplane Board Config Utilities***

## bpbconfig for SCO OpenServer

This utility is for the hard disks located on the Backplane Board. *bpbconfig* is also used to change event handling options.

*bpbconfig* is invoked during BPB Agent installation. It may be invoked at any time by typing *bpbconfig* from a UNIX shell prompt. The executable file is found in the */usr/bin* directory

## Running bpbconfig

```
Setting Backplane_Board Event_Action View_Log Quit
```

---

```
| Set Hard Disk Location on Backplane Board
```

The utility has the following functions:

## Setting

```
Setting Backplane_Board Event_Action View_Log Quit
```

State	Ctrl	Type	Ctrl	Ch	ID	Model		Size(MB)	Bd#	S1#
OK	Mylex		0	0	0	IBM	DORS-32160W	2063	0	1
OK	Mylex		0	0	1	Seagate	St31051N	1023	0	2

```
[Test] [Update] [Exit]
```

This function allows the user to set the physical location of hard disks installed on the Backplane Board. Bl# is backplane board number, if user faces the machine, the left hand side of the disk trays is Bl# 0, Sl# starts from top to bottom -> 0 to 6 or 7. Sometimes we use "tray" instead of „slot“.

## Backplane board

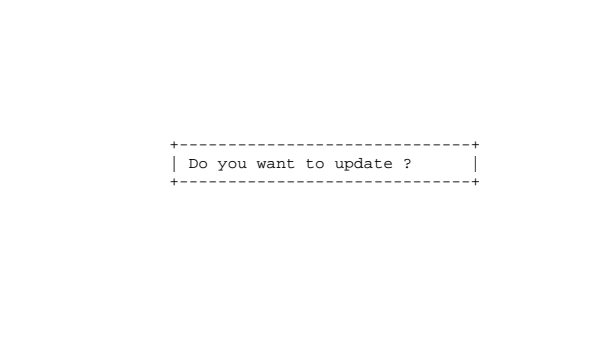
[illegible]

This function shows the disks mapping on the Backplane Board.

## Using bpbconfig

- Use the arrow keys to move the item highlight and press the return key to execute or select the highlighted item.
- Use the TAB key to switch control between the main window and confirm selection window shown at the bottom of screen.
- To quit, select Quit from the main menu and press Enter.

Before the program exits, *bpbconfig* will ask the user to accept their modifications. If the user chooses „Update“, the corresponding files will be updated. Otherwise, if the user chooses „Cancel“, no modification occurs.



The screenshot shows a terminal window with a menu bar at the top containing the following items: **Setting**, **Backplane\_Board**, **Event\_Action**, **View\_Log**, and **Quit**. The **Quit** item is highlighted in yellow. Below the menu bar is a large dashed rectangular area representing the main content of the terminal. In the center of this area is a confirmation dialog box. The dialog box has a title bar with a close button (an 'x' icon) and the text "Do you want to update ?". Below the title bar are two buttons: **[Update]** and **[Cancel]**. The **[Update]** button is highlighted in yellow.

After the user updates all modifications, *bpbconfig* will ask the user to restart the BPB Agent.

```
Setting Backplane_Board Event_Action View_Log Quit
```

---

```
|-----|  
|  
|                                     |  
|               +-----+           |  
|               | Do you want to restart BPB Agent ? |           |  
|               +-----+           |  
|                                     |  
|                                     |  
| Note: If you want BPB Agent to execute correctly,  
|       please choose [Restart] after you finish all  
|       modifications.  
|                                     |  
|                                     |  
|-----+-----|  
| Restart |      [Cancel]      |
```

## bpbcfg for SCO UnixWare

The *bpbcfg* utility is used to configure the location of the hard disks installed in the Backplane Board slots. *bpbcfg* may be invoked by executing this command at the UNIX shell:

```
# /usr/bpb/bpbcfg
```

## Using bpbcfg

- Use the <ESC> key to move the cursor between the menu and form region.
- When the cursor is located in the form region, use the <Tab> key or arrow keys to move cursor around configurable fields, and then edit the values in them.
- Select the menu **File/Save** to update the configuration file `bpb.conf`.
- Select the menu **File/Exit** to quit from *bpbcfg*.

```

BackPlane Board Configuration Utility (bpbcfg)

File
+-----+
| Disk.....                               | BPB.. | | | | | | |
|[Stat|CtrlType      :Ctl:Ch:ID|Vendor   Model          Sz(MB)]->[Bd:Sl] Save: |
|====|=====|=====|=====|=====|=====|=====|=====|
|???  Mylex           0  0  0              0  0  0  [ ] |
|???  Mylex           0  1  1              1  1  [ ] |
|???  Mylex           0  1  2              1  7  [ ] |
|???  Adaptec         0  0  0              0  1  [ ] |
|???  Adaptec         0  1  7              1  6  [ ] |
+-----+

: [DiskCtrlType:ControllerNo:ChannelNo:TargetID] -> [BpbBoard#:Slot#]

```

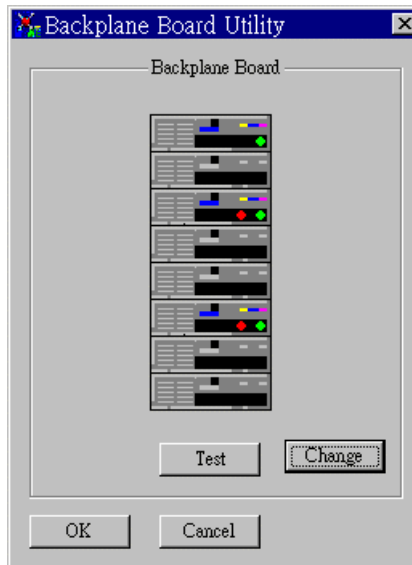
---

*bpbcfg* will list all hard disks connected to the found disk array controllers. Each of these hard disks is identified by the controller type name, controller number, channel number, and target ID. The user must fill out the Backplane Board number and the slot number -- the disk location in the Backplane Board slots. With this location information, BPB agent *bpbsmuxe* can then correctly reflect the disk status on the Backplane Board.

---

## Back Plane Board Utility for Windows NT

The *bpbcfg* utility shows you the status of each hard disk drive or drives connected to the Backplane Board of your server if you have one or two for that matter. You can also setup/change the hard drive's location and trays along the Backplane Board or Boards using this utility.



This figure shows a single Backplane Board. If your server is operating two Backplane Boards, the utility will likewise display two Backplane Boards with the necessary hard drive or drives available.

The red light indicates whether the hard drive is in good condition or not:



If only the green light appears, the hard disk drive is doing OK.



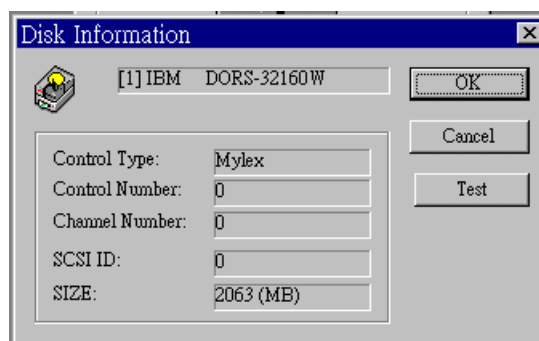
If the red light appears, then something's wrong with the hard disk drive.



If no light appears, then no hard disk drive is connected to the tray.

## Displaying Hard Disk Drive Information

To view the hard disk drive information on the Backplane Board, simply click one of the Backplane Board trays with an available hard disk drive. The hard disk drive info displays.



The **Test** button shows you the position of the hard disk drive by flashing the light in the Backplane Board Utility window. The flashing red light is located on the disk drive front panel of the machine.



---

## Testing the Backplane Board

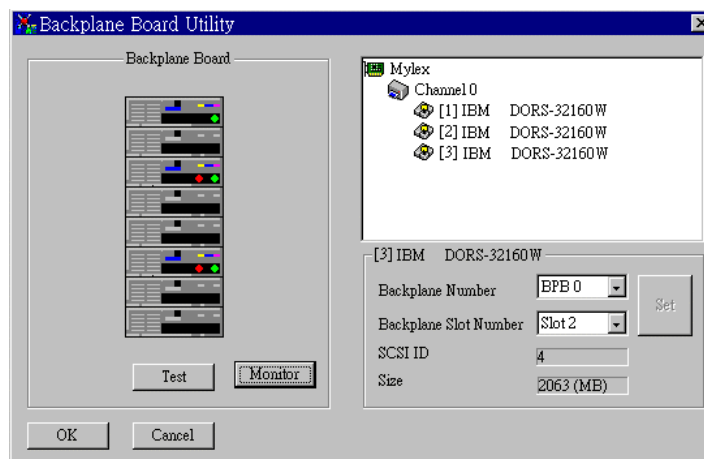
The **Test** button will flash all the lights of the trays with an available hard disk drive on the Backplane Board. If the tray or trays is not blinking, then it means that there's no hard disk drive attached to it.

To start testing, click the **Test** button. You'll notice that the trays with an available hard disk drive are blinking. To stop testing, click the **Test** button again.

## Setup/Change the location and trays of hard disk drive along the Backplane Board

You can change the position of the hard disk drive along the Backplane Board panel.

Click the **Change** button, and the following window appears:



The Backplane Board Utility window will extend and show the display window. Below it shows the current location of the hard disk drive. The display window shows all the available hard disk drives currently connected to the Backplane Board or Boards.

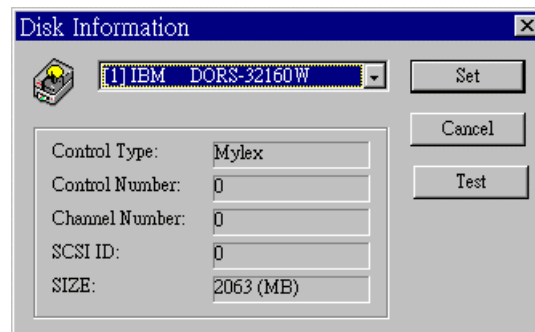
---

### To change the location of a hard disk drive:

1. Click on the desired channel number to show disk drive, then you can click the hard disk drive to change in the display window. You will notice that the current location of that hard disk drive will be displayed.
2. Choose a new location by using the dropdown menu. When you face the machine the left side of the disk trays are belongs to backplane 0, right side is backplane 1.
3. Click the **Set** button to confirm the changes.

## Monitoring Hard Disk Drives

The **Monitor** button shows the current state of the hard disk drive. To monitor a hard disk drive, click the **Monitor** button. The following screen displays:



Click the dropdown menu to choose among the available hard disk drives. Click **Set** to save changes.

---

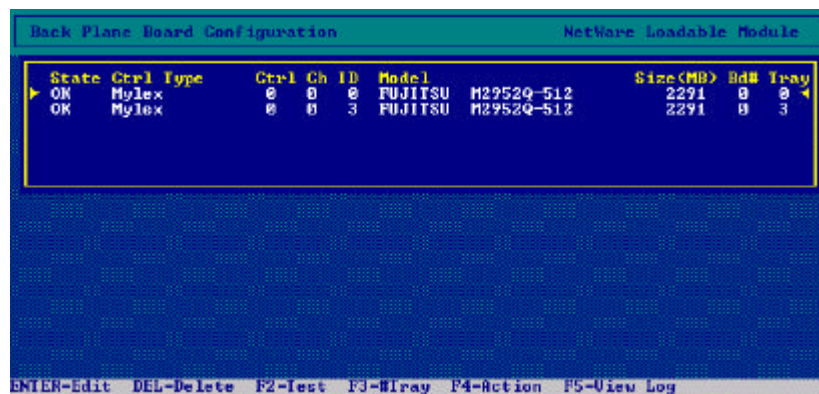
## BPB Console for NetWare

The BackPlane Board Console is used to monitor disks' status and edit board/slot settings.

### Running BPB Console

At the system console prompt on your NetWare server, enter the command „load bpbcfg“ to run this program.

Most of the time you don't have to manually load this program. It is auto-loaded by other programs in AUTOEXEC.NCF at server boot time. You can press ALT-ESC or CTRL-ESC to switch to a screen like the following:



State	Ctrl Type	Ctrl Ch	ID	Model	Size(MB)	Bd#	Tray
OK	Mylex	0	0	FUJITSU M2952Q-512	2291	0	0
OK	Mylex	0	3	FUJITSU M2952Q-512	2291	0	3

ENTER-Edit DEL-Delete F2-Test F3-Mrtray F4-Action F5-View Log

This console screen displays information about all of the hard disks currently monitored by BPB Agent. You can also edit the board/slot settings here.

### Press ENTER to Edit

A pop-up window appears allowing you to enter or edit the board number and slot number of the backplane board where the disk is located. This screen is shown as follows:



### Press F2 to Flash LED

After you edit the board/slot number, you can press F2 to flash the LED in the disk tray. This helps you identify the disk being configured.