

CA Unicenter TNG



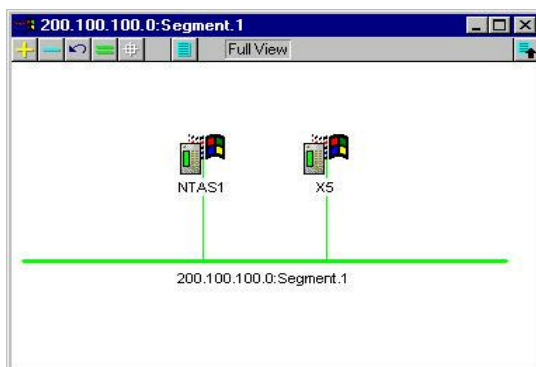
Before installing the snap-in module, make sure that the CA Unicenter TNG Framework and ASM Pro Station were installed.

To install the Snap-in module, simply run Setup.exe from the installation CD under the directory \Station\CA\ to install/uninstall the ASM snap-in module.

This module will create some classes and objects in the repository of Unicenter TNG. The ASM Agent object will be created automatically when a new host had been added into the repository (manual add or autodiscovery) only.

To launch ASM Station from Unicenter WorldView:

1. Find the node you want to monitor.
2. Double-click the node's icon.



-
3. Right-click the ASM Agent's icon and launch ASM Station from the context menu.



If ASM Agent is previously installed, an ASM Agent's icon will appear.

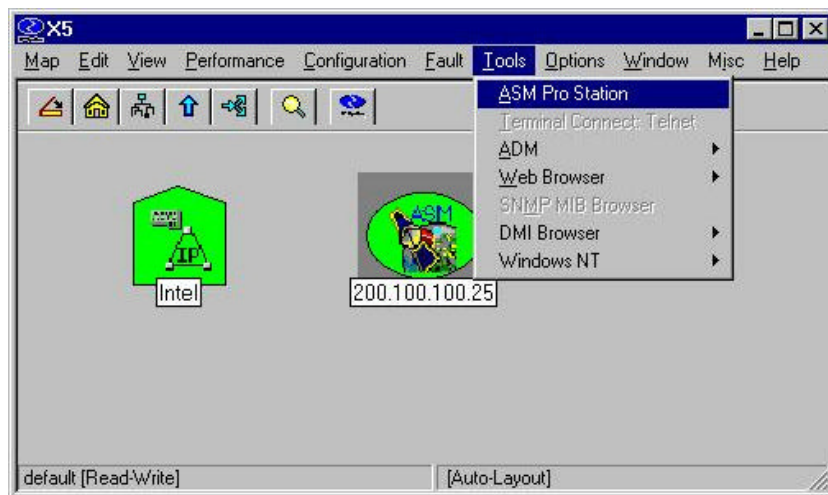
HP OpenView



Before installing the snap-in module, make sure that the HP OpenView Network Node Manager and ASM Pro Station were installed.

To install the Snap-in module, simply run Setup.exe from the installation CD under the directory \Station\OpenView\ to install /uninstall the ASM snap-in module.

Each time, first launch HP OpenView Management Console and then select the "Misc\ASM/ADM Snap in:ASMMon" menu item to auto-discover ASM machines. Select one ASM machine and then click on menu items the "Tools\ASM" menu. The ASM Pro Station will be launched.



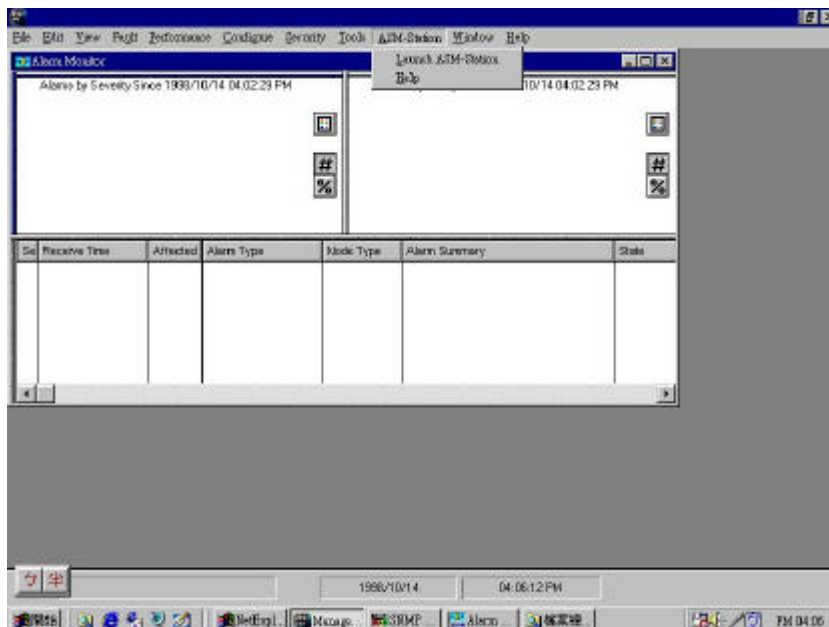
Novell Managewise



Before installing the snap-in module, make sure that the Novell Managewise was installed.

The installation of ASM Pro Station will auto-detect the existence of Novell Managewise in the system. If the Managewise was installed, ASM Pro Station will be snapped into Managewise automatically.

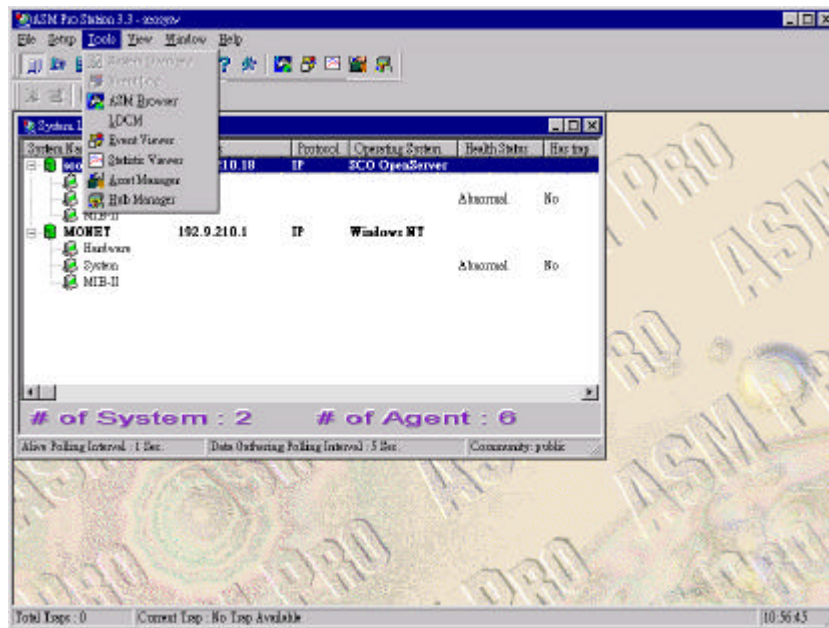
Each time, first launch Managewise Console and then select the ASM-Station\Launch ASM-Station menu item. The ASM Pro Station will be launched.



Intel LDCM



Before launch LDCM from ASM Pro Station, make sure that the Intel LDCM was installed.



The ASM Pro Station will auto-detect the existence of Intel LDCM in the system. If the LDCM was installed, ASM Pro Station will add a menu item in Tools menu automatically.