



This feature is optional.

ASM now offers a tool that enables you to integrate the ASM into Microsoft Systems Management Server Administrator. This new feature allows you from the SMS Administrator to:

- View ASM specific information
- Launch ASM Station for a selected system

For more details on SMS and its services, refer to the Microsoft SMS user's guide.

The following sections give information on how to integrate ASM into SMS Administrator.



Information and instructions listed in this chapter are applicable to both Windows 95/98 and Windows NT environments.

Installing ASM Station into SMS Administrator

To install ASM Station into SMS Administrator, follow these steps:

1. Before you begin, make sure that ASM Station and SMS have been installed in the system. For information on how to install SMS, refer to the Microsoft SMS user's guide.
2. Run `SmsSnapIn.exe` from ASM Station Installation Media's SMS directory.
3. When ASM SMS Snap-In window appears, click on the Install button.



Figure E-1 ASM SMS Snap-In Window

4. ASM SMS Snap-In program will copy the necessary files into the SMS directory under the ASM Station Installation directory. After completion, a message box will show the installation is successful or not.

Operating ASM under SMS

After you have installed ASM into SMS, you can now use either SMS or ASM to manage your server systems in network.

To operate ASM under SMS, follow these steps:

1. Start SMS Administrator by selecting on Start/Programs/Systems Management Server/SMS Administrator.

2. After login, select menu File/Open. From the Open SMS Window dialog box select Sites to open the Sites window.

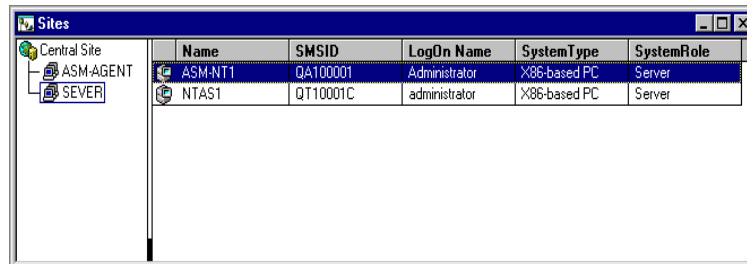


Figure 7-10 Sites Window

3. In the Sites window, select a site from the left list then the right list displays all machines belonging to the selected site. Double-click on a system. The Personal Computer Properties window appears. ASM related properties are listed behind SMS standard properties.

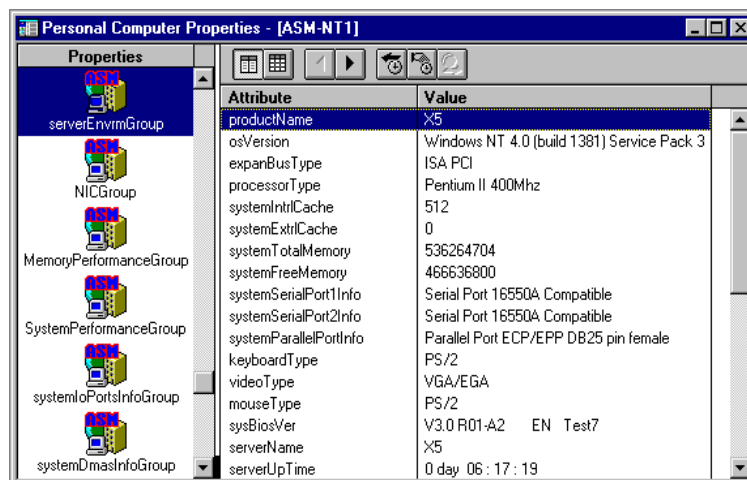


Figure 7-11 Personal Computer Properties Window

4. From the Tools menu, select ASM Pro Station then ASM Station will be started for the selected server system.

Removing ASM Station from SMS Administrator

To remove ASM Station from the SMS Administrator, follow these steps:

1. Run `SmsSnapIn.exe` from ASM Station Installation Media's SMS directory.
2. When ASM SMS Snap-In window appears, click on the `Remove` button.
3. After completion, a message box will show the uninstallation is successful or not.