

ASM Pro Adaptec CI/O Utility

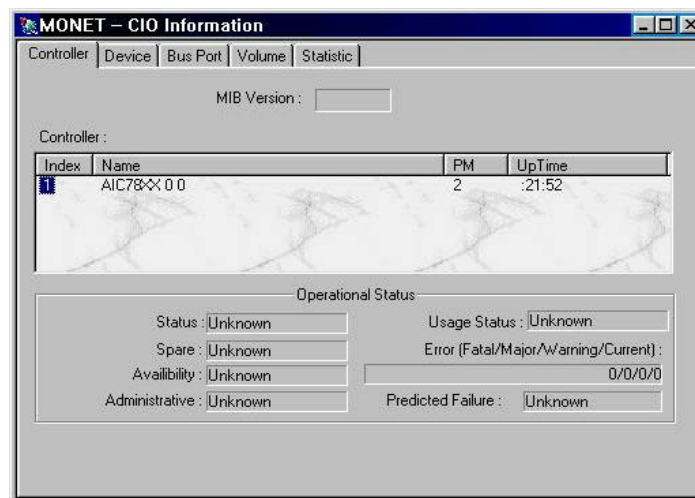
H

Adaptec CI/O Array Management software is the interface to all Adaptec array solutions, simplifying array management and providing seamless scalability through a built-in upgrade path.

With Adaptec's CI/O Array Management software, network managers can monitor and manage storage either locally or remotely from any PC or workstation on the network. The management software allows network managers to see at-a-glance both physical and logical array configurations and other SCSI peripherals for any server using Adaptec array adapters and controllers.

This utility monitors status about storage devices and relative information of Adaptec controller. The sections below give a brief description of the utility.

Adaptec CI/O Monitor Window



This window is used to monitor the Adaptec CI/O Controller information. The upper left window displays the hierarchical view of the controller structure, and the upper right window shows the logical drive information.

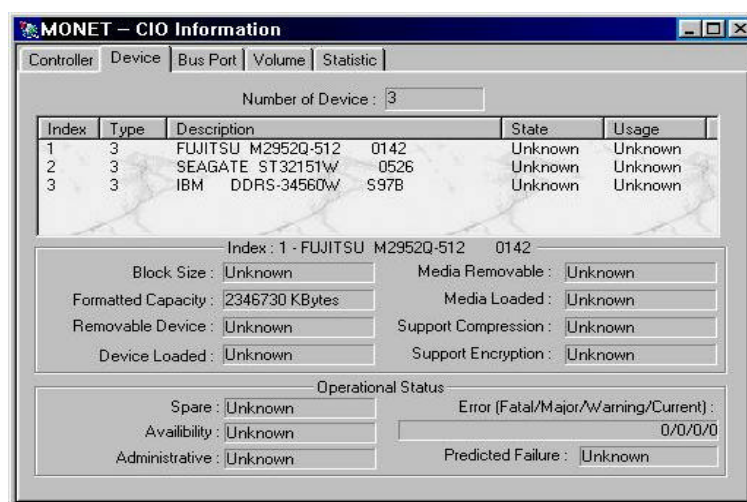
Controller Tab

This Window is used to monitor the Adaptec CI/O Controller Information. Under this tabs the displayed information is as shown below:

Terms	Description
MIB Version	The revision number of the CIO SNMP agent
Controller	
Index	A unique index for each storage controller
Name	Name, brand, and hardware revision level of the storage controller
Protection Management	Indicates whether or not the controller provides redundancy or protection against device failures
Up Time	The number of seconds that have passed since this controller was last powered on
Operational Status	
Spare	For objects which reference this operational state and which are sparing some other object this attribute describes sparing status
Availability	The availability of the object
Administrative	The administrative state of the object
Usage	The usage state of the object
Error Count Fatal, Major, Warning, Current	The accumulated Fatal or Non-recoverable error count for the object The accumulated Major or Critical error count for the object The accumulated Warning or Non-critical error count for the object This attribute presents the current error status

	for the object. The most critical error status in effect should be presented.
Predicted Failure	Enumeration describing the current Device Predicted Failure Status (e.g.: the S.M.A.R.T. status of the object)

Device Tab

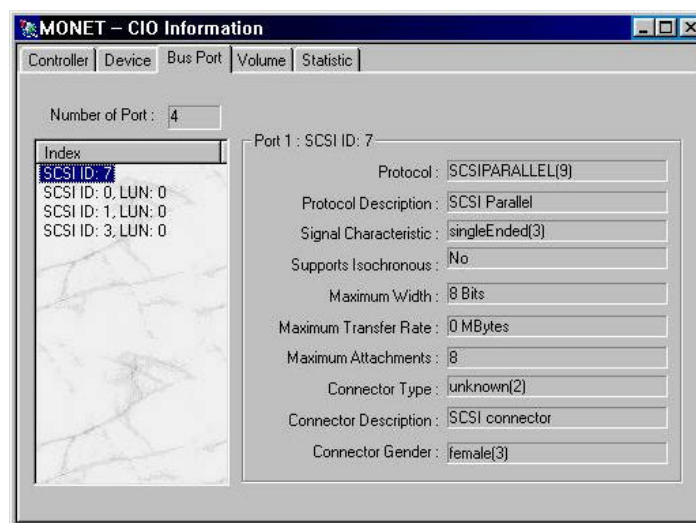


This Window is used to monitor the Adaptec CI/O Device Information. Under this tab the displayed information is as shown below:

Terms	Description
Number of Device	The Total number of storage devices
Index	A unique index value for each storage device beginning with 1
Type	The type of this mass storage device
Description	A longer description of the storage device
State	The operational status of the object
Usage	The usage state of the object

Terms	Description
Device Status	
Block Size	The size in bytes of the data blocks used on the storage media. If the media block size is unknown or inconsistent then this value shall be zero
Formatted Media Capacity	The total size in kilobytes of this storage media after it has been formatted
Removable Device	If true, then this storage device is removable (e.g.: PCMCIA device)
Device Loaded	If true, then the storage device is loaded
Removable Media	If true, then the media in this storage device
Media Loaded	If true, the media in this storage device is loaded
Support Compression	If true, the storage device supports compression
Support Encryption	If true, the storage device supports encryption
Operational Status	

Bus Port Tab

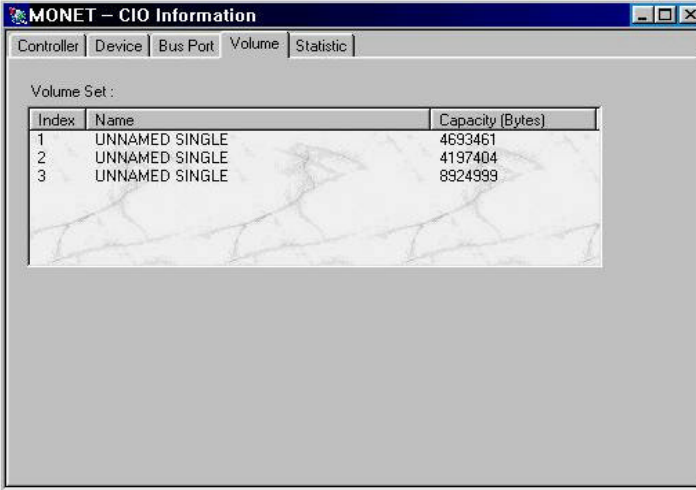


This window is used to monitor the Adaptec CI/O Controller Device information. Under this tab, the displayed information is as shown below:

Terms	Description
Number of Port	Total number of ports
Port Information	
Protocol	The protocol describing the electrical characteristics of the Bus Port. If 'Other' is used, then the Protocol Description attribute shall be used
Protocol Description	Additional description of the protocol describe above
Signal Characteristics	The electrical characteristics of the Bus Port being described
Support Isochronous	Indicates whether or not the bus port supports isochronous transfers

Terms	Description
Maximum Width	The maximum width, in bits, of this Bus Port's data path. A value of 1 should be used for serial
Maximum Transfer Rate	The theoretical maximum transfer rate, in millions of bytes per second, that this Bus Port is capable of achieving under ideal conditions. A value of zero should be used if the transfer rate is less than 1 million bytes per second
Maximum Attachments	The maximum number of directly addressable entities supported by this bus port's protocol
Connector Type	Describes how options (cards, devices, etc.) physically connect to this port bus. If 'Other' is used, then the connector type description attribute shall be used
Connector Description	Additional description of the connector described above
Connector Gender	Indicates the gender of the connector described above

Volume Tab



MONET - CIO Information

Controller Device Bus Port Volume Statistic

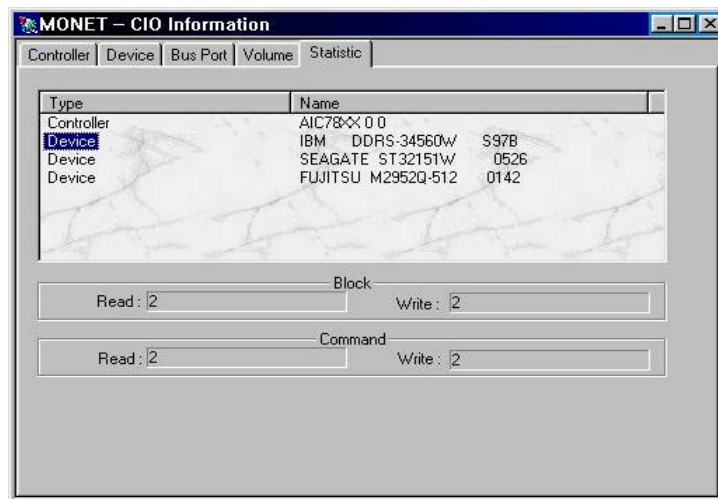
Volume Set :

Index	Name	Capacity [Bytes]
1	UNNAMED SINGLE	4693461
2	UNNAMED SINGLE	4197404
3	UNNAMED SINGLE	8924999

This window is used to monitor the Adaptec CI/O Volume information. Under this tab, the displayed information is as shown below:

Terms	Description
Index	A unique index value for each volume set beginning with 1
Name	The name of the volume set
Capacity	The total size in bytes of the user data space of this volume set

Statistic Tab



This window is used to monitor the Adaptec CI/O Statistic information. Under this tab, the displayed information is as shown below:

Terms	Description
Blocks Read	The number of 512 byte blocks read from the object
Blocks Written	The number of 512 byte blocks written to the

	object
Read Commands	The number of read commands issued for the object
Write Commands	The number of write commands issued for the object