

## Chapter 4   *Dynamic Events*

---

Network Events can be displayed in an applet window that displays a dynamic event log and can also be written to a log file. To view the events, you can either open an Event Log Window or browse the event log file.

Below is a list of events recorded by WebASM:

- Trap sent by a device
- Addition of a new network device (either manually or by discovery)
- Deletion of a network device from the database
- Change in the device state
- Change in the device properties

These colors determine their conditions:

Color of Line in the Log	Description of Event
Red	Critical
Yellow	Minor
Green	Normal
Blue	Unknown



*WebASM flashes certain events in the event log, based on the actions configured for them. Clicking on a flashing entry stops the flashing.*



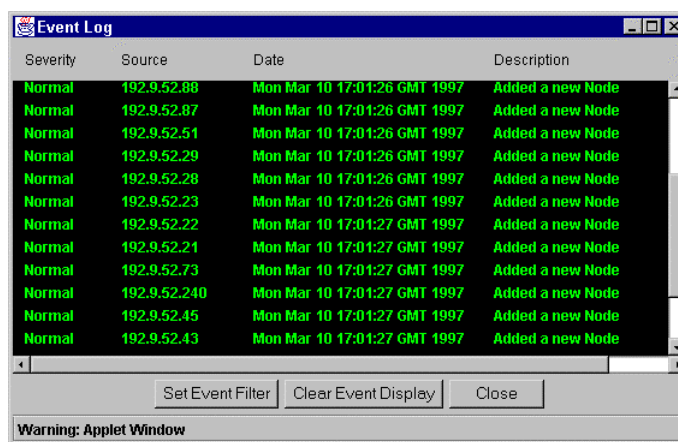
*Another feature is the display of messages on events. This is also based on the actions configured for the device.*

---

## 4.1 Opening the Dynamic Event Log Window

Click on the **Events** button on WebASM's main window. The dynamic Event Log window opens and displays network events as they occur.

You can filter out the events that appear in this window to see only the events you are interested in by clicking on the **Set Event Filter** button in the Event Log Window.



---

## 4.2 Filtering Events in the Event Log Window

To open the filter window click the **Set Event Filter** button in the Event Log window. The 'Set Event Filters' dialog displays a filter list. The 'All' parameter in the IP Address column is a filter for the events generated from all the devices other than those displayed in the list. If it is omitted then the events from the devices other than those in the list are not displayed. Each entry shows the IP address of the device for which the filter is set and the events which are not suppressed.

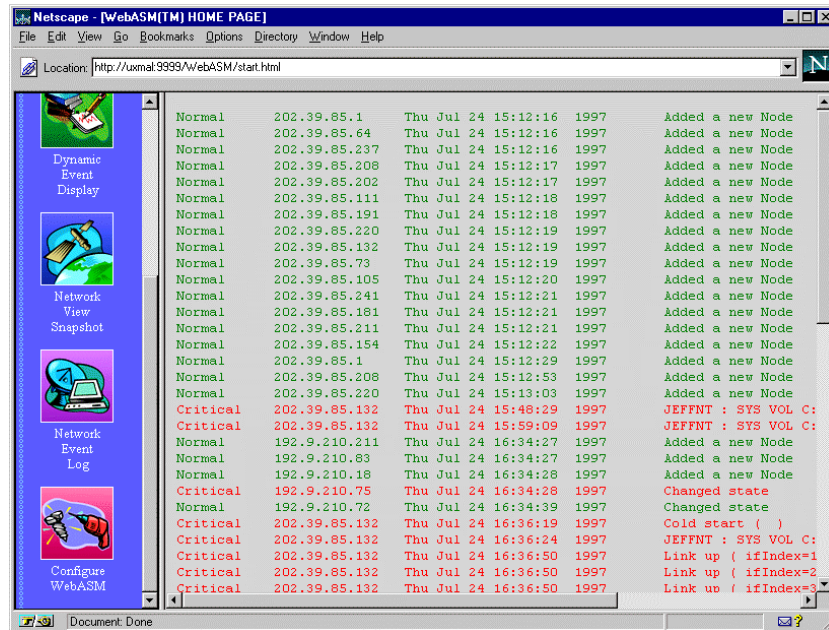
IP Address	Critical	Minor	Normal	Unknown	UnManaged
All	Yes	Yes	Yes	Yes	Yes

To add a filter in this list enter the IP address of the device in the edit box, click on the events that should not be suppressed and press the **Add Filter** button.

To modify a filter, select the filter from the list and modify it.

## 4.3 Browsing the Event Log File

Click on the **Network Event Log** icon located in WebASM's main window. The entries in the log file have different colors, depending on the severity of the event.



*This is a snapshot of the log file generated at the time you click on the icon..*