

## **Chapter 6    Managing a Node**

---

There are two ways you can manage a device. By using the **Network View Snapshots** button located on the start page and by using the **Global View** window.

WebASM manageable devices can be classified into two categories :

- Devices for which vendors have a customized management page available. The customized management page pops up when the device is selected.
- Devices which do not have a customized management page. To manage this category of devices WebASM provides a set of default pages which allow you to manage only Standard SNMP, such as MIB-2, information.

The URL of the management page is set in the node properties. When the device is selected for management it will open this URL. If you have devices in your network which do not have customized management pages, please ask the device vendor to contact us via the email address: [hansenwu@acer.com.tw](mailto:hansenwu@acer.com.tw).

---

## 6.1 Network View Snapshot

The Network View Snapshot displays a page showing you the subnet and gateway information. To manage devices from this point just click on the device you want to manage. Clicking on the subnet icon will bring up the subnet view, while clicking on the device icon will let you manage the device.

### To manage devices using the Network View Snapshot button:

1. Click the **Network View Snapshot** button. The Subnet and Gateway Information screen displays.
2. Click the device you want to manage.

The support for standard MIB's (e.g., MIB-II and Host Resources) allows Network Administrators to monitor all SNMP manageable devices in the network. As a result, even if the customized management pages for the devices are not available, they can still manage it.

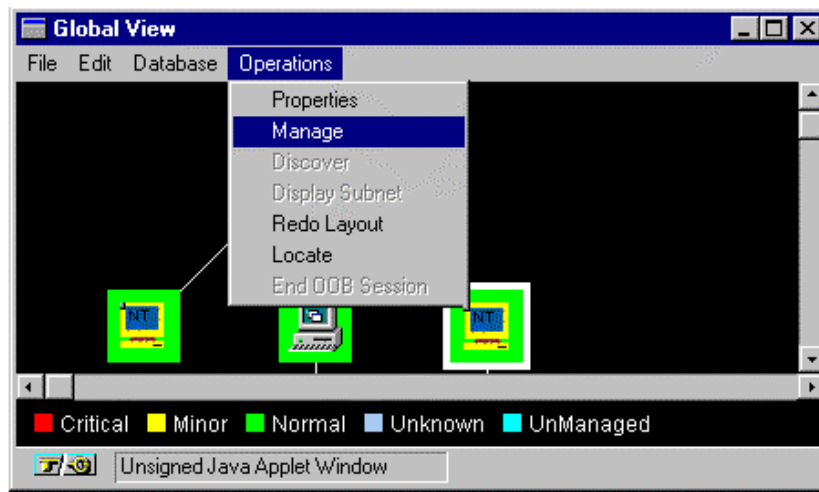
---

## 6.2 Global View

The Global View on the other hand shows you a graphical representation of the whole network. To manage a device, select the device to be managed. After selecting the device choose *Manage* from the *Operations* menu.

### To manage devices using Global View:

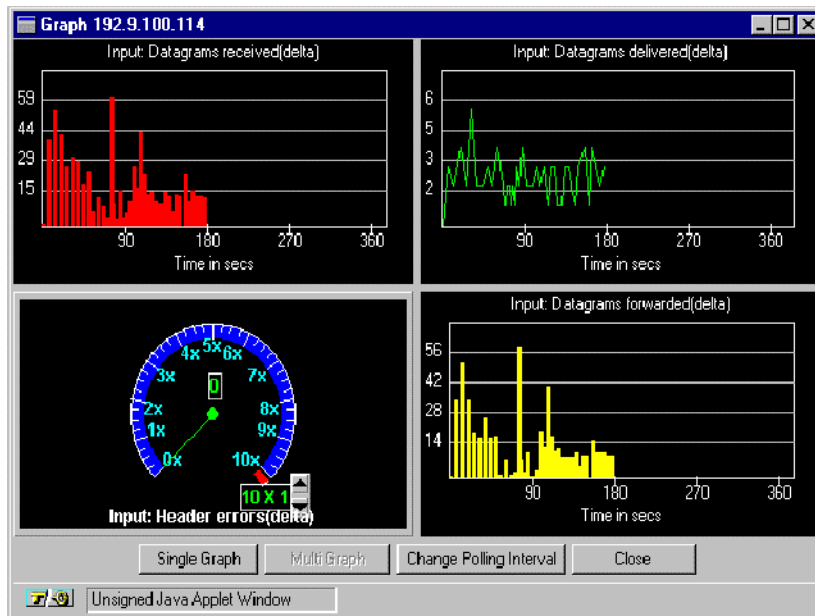
1. In the Global View window, click the device you want to manage.
2. Choose **Operations => Manage** from the menu bar as shown below.



The support for standard MIB's (eg. MIB-II and Host Resources) allows Network Administrators to monitor all SNMP manageable devices in the network. As a result, even if the customized management pages for the devices are not available, they can still manage it.

## 6.3 Graphing Parameter

Pages optionally permit real-time monitoring of various device parameters. These pages contain checkboxes to *enable graphing*. To graph these variables, select the checkboxes corresponding to the variables you are interested in and click the **Draw Graph** button. A Java applet is loaded which draws real-time graphs of the selected variables.

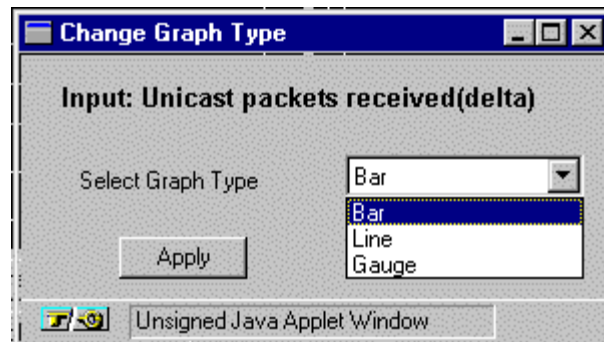


The default polling interval is 5 seconds. This can be modified by clicking the **Change Polling Interval** button in the graphing applet.

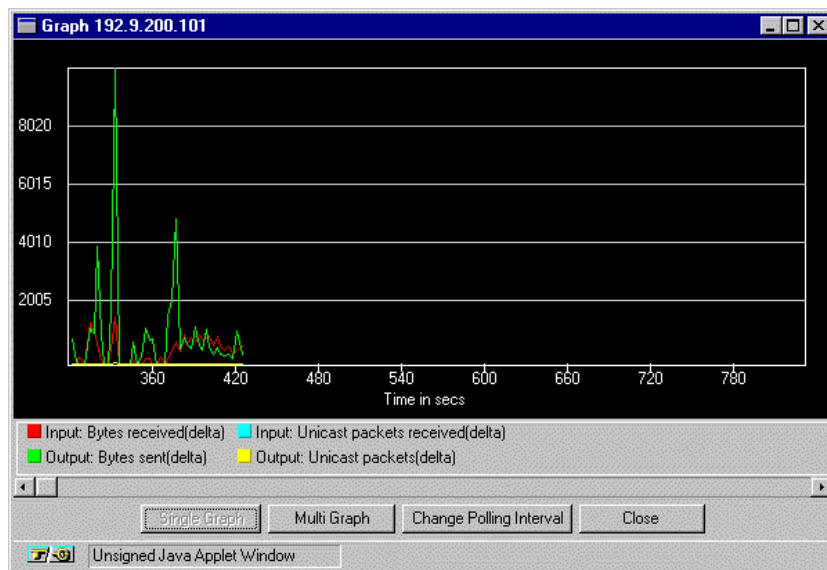
### 6.3.1 Graph Types

You can view the list of supported graph types by pressing the right mouse button on a graph. WebASM supports three types of graphs:

- 
- Line graph
  - Bar graph
  - Gauge



You can plot all the variables in a single graph by pressing the **Single Graph** button on the Graph applet. In a single graph, if the type of the graph selected is bar, then the current value of the variable is plotted. To draw the variables in separate graphs, click the **Multi Graph** button.



Colors used for the graph are repeated if there are more than 5 variables to plot.

In *Single Graph* mode the *Gauge* option for graph type is disabled and the *Bar* option plots only the current values of variables with one bar per variable shown.