

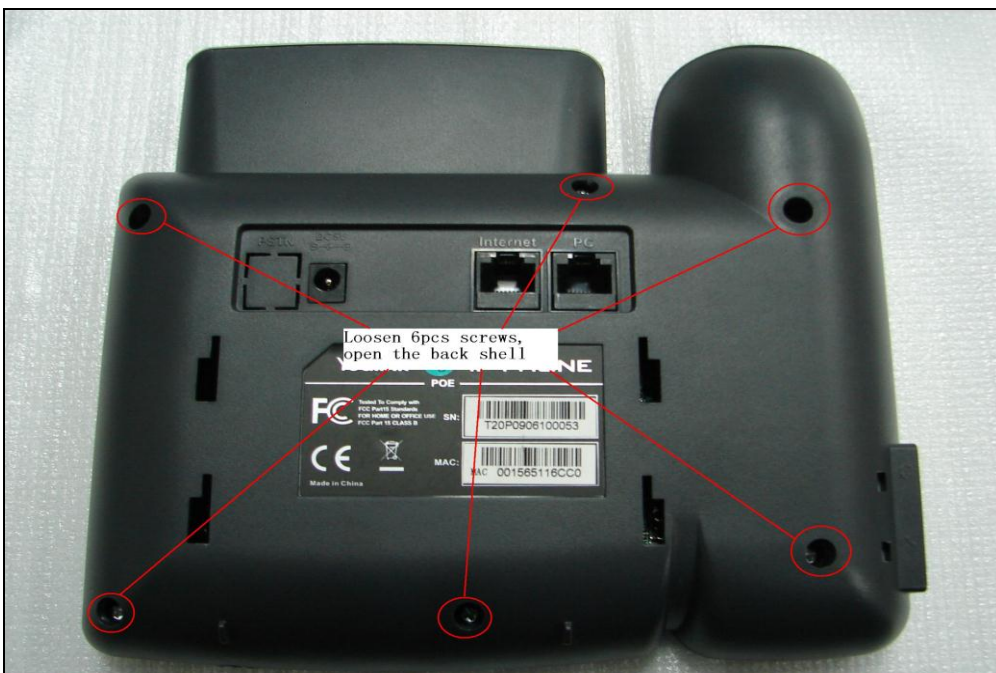
## How to replace SIP-T20(P)'s hardware components

### Replace the mainboard

**Step1:** Take down the power, network, handset and the bracket of back shell.

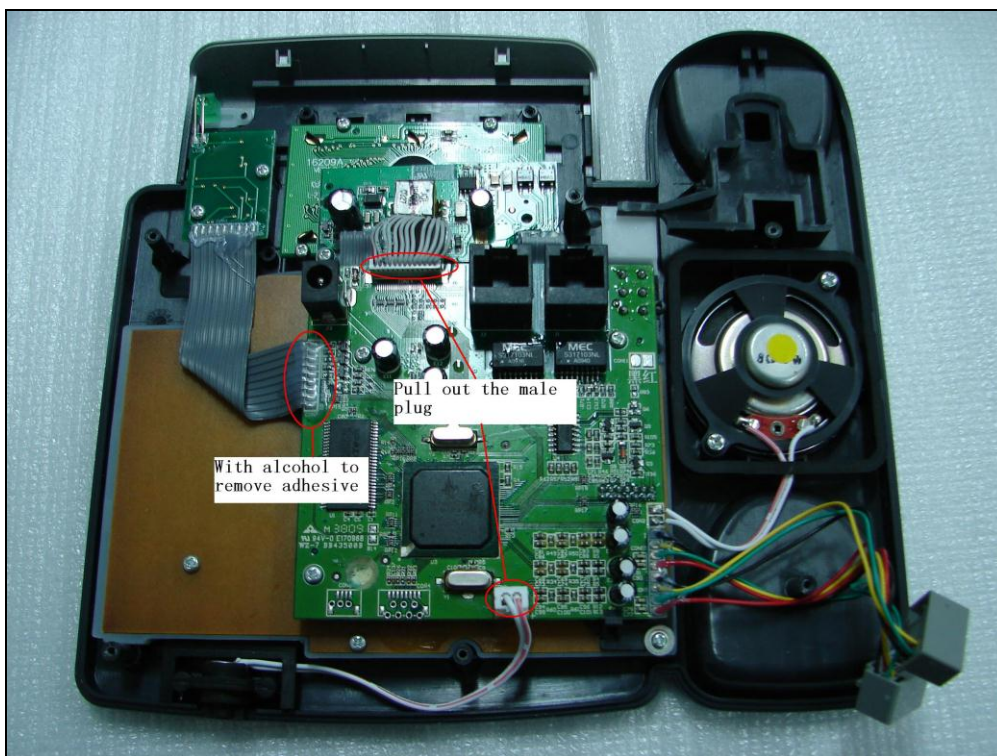


**Step2:** Loosen 6pcs of screws, open the back shell.



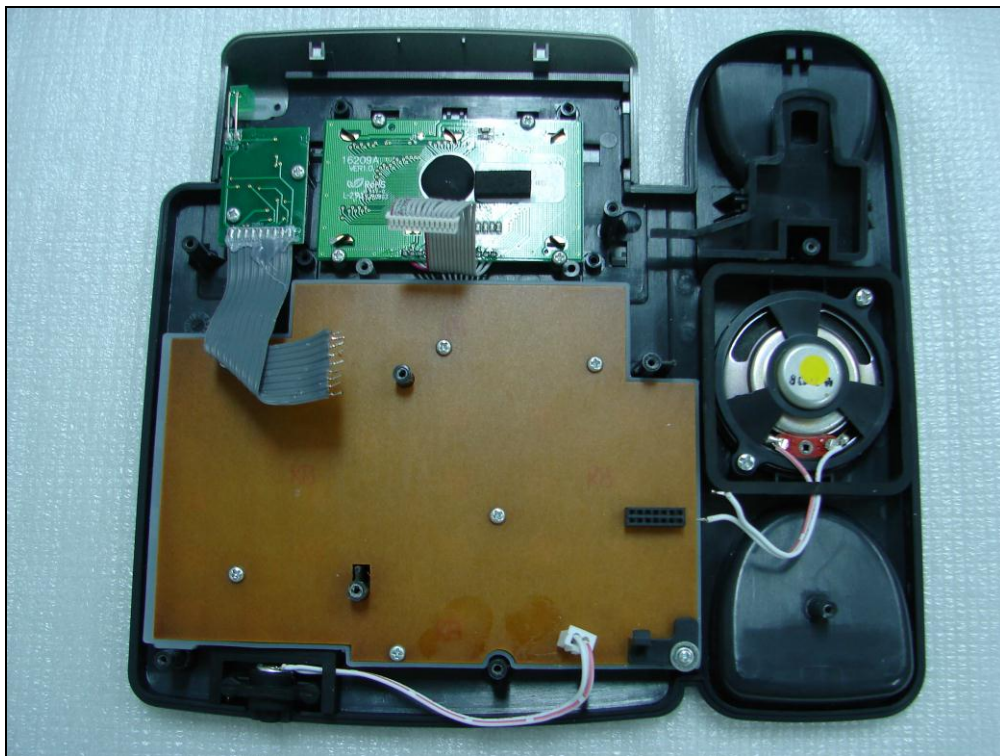
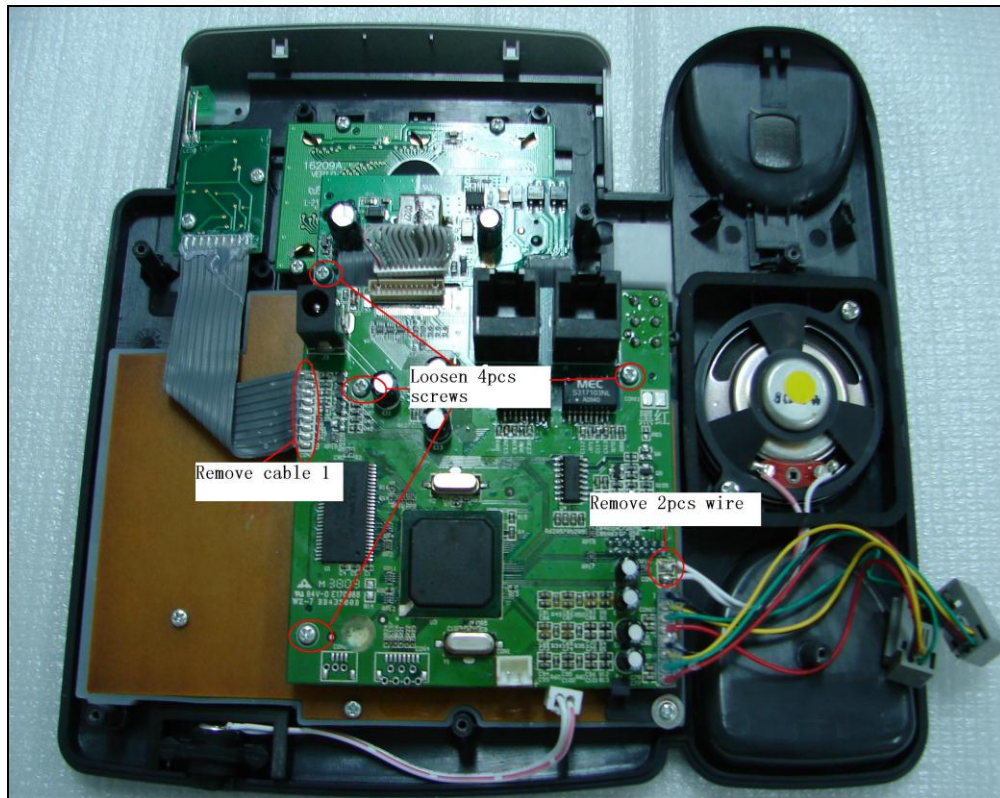


**Step3:** Remove the adhesive with alcohol. Pull out the male plug of the LCD module and microphone.



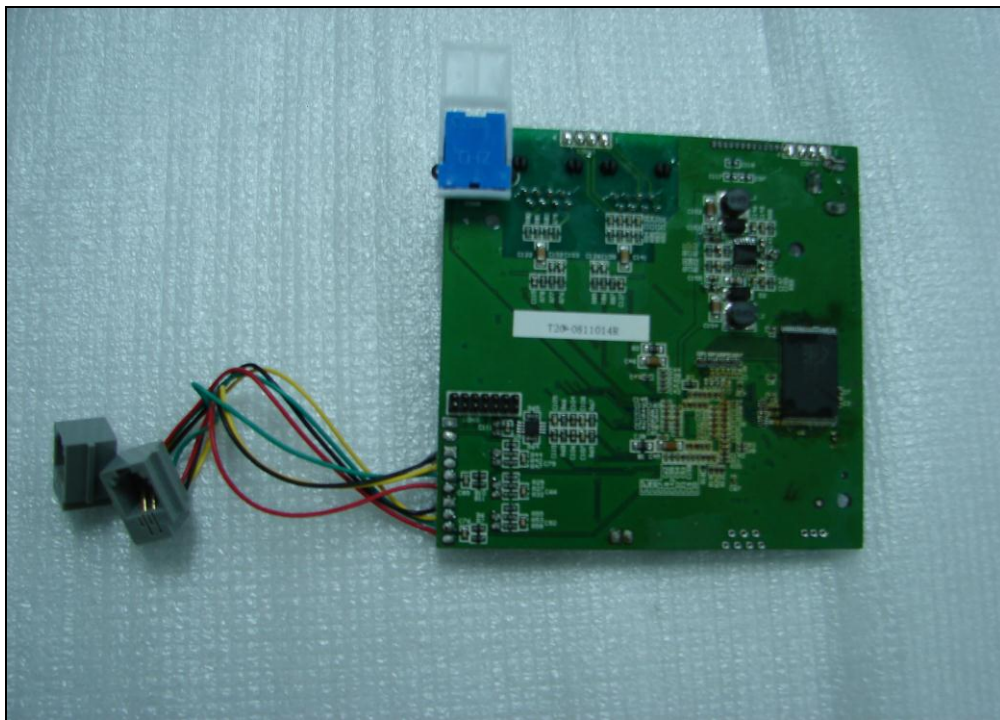
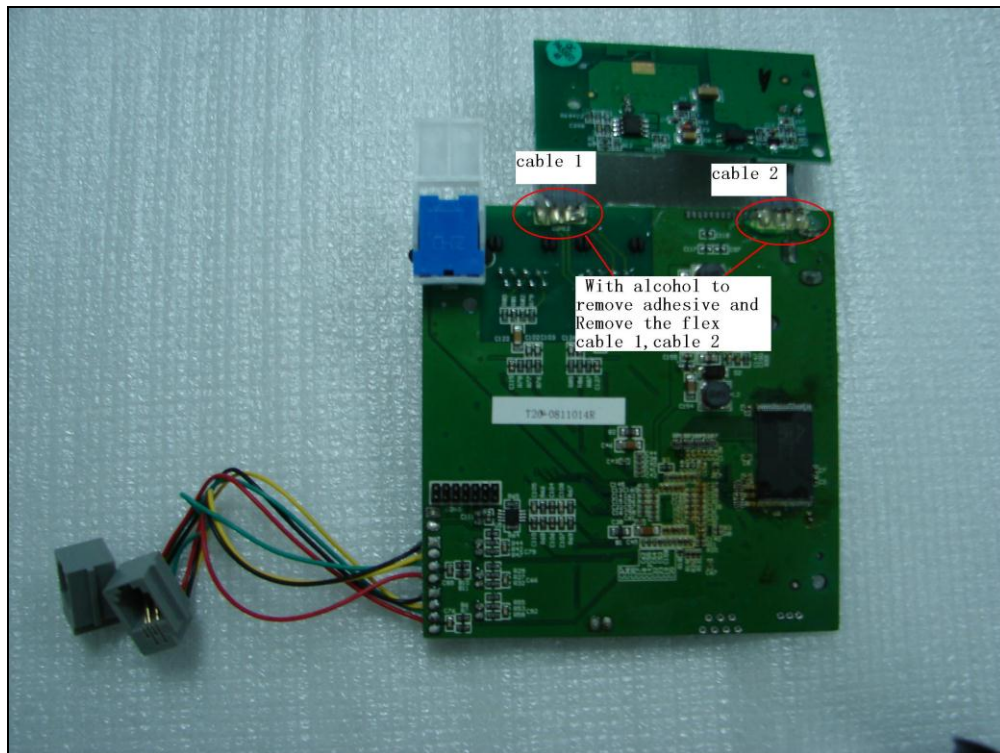


**Step4:** Remove the flex cable 1 and 2pcs wires of the speaker with a hot iron. Loosen 4pcs of screws and take away the mainboard, PoE board.



**Note:** The temperature of hot iron must be less than 350°C.

**Step5:** Remove adhesive with alcohol and remove the flex cable 1, cable 2.



**Step6:** Install the new mainboard in the opposite way following the steps mentioned above.

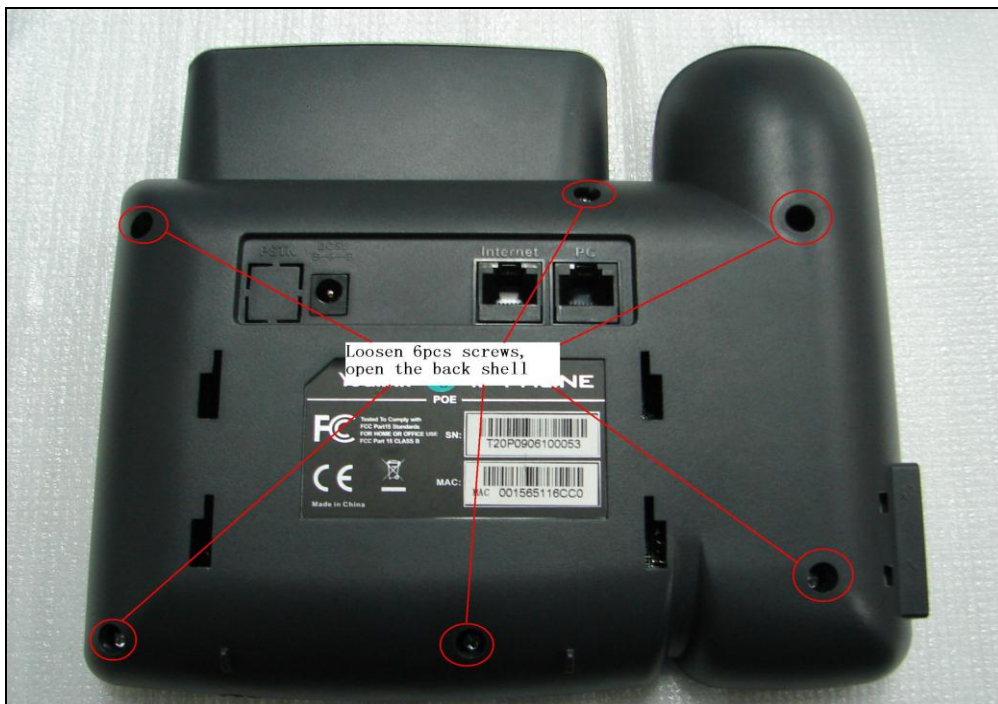


## Replace the LCD module

**Step1:** Take down the power, network, handset and the bracket of back shell.

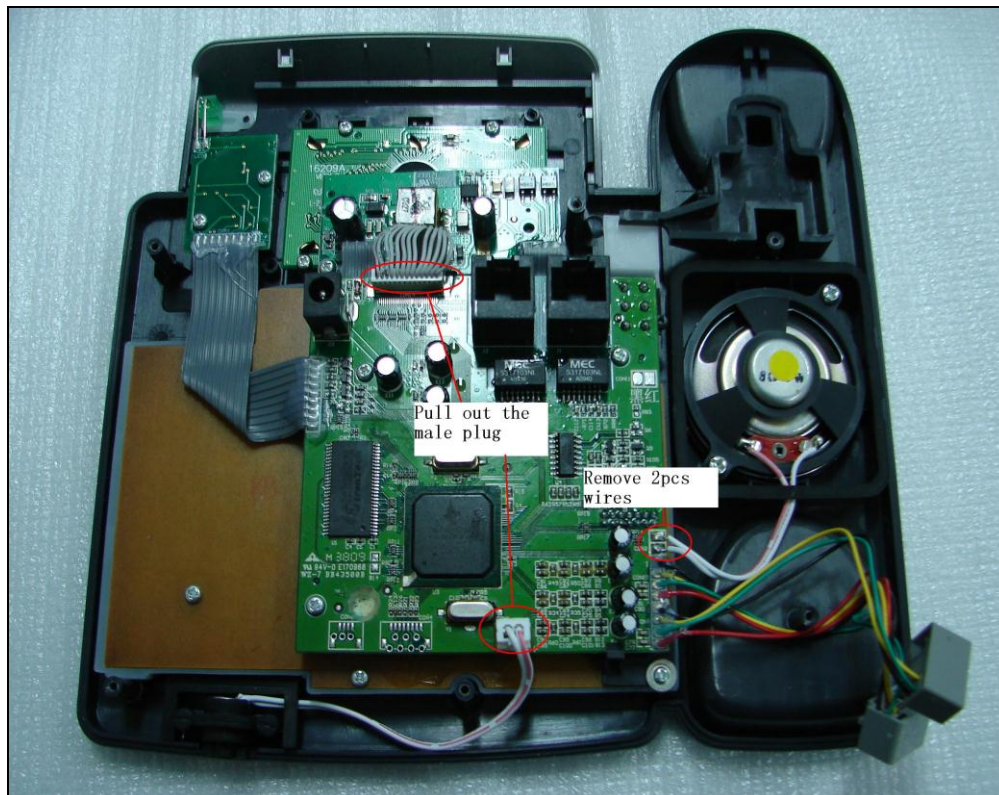


**Step2:** Loosen 6pcs of screws, open the back shell.





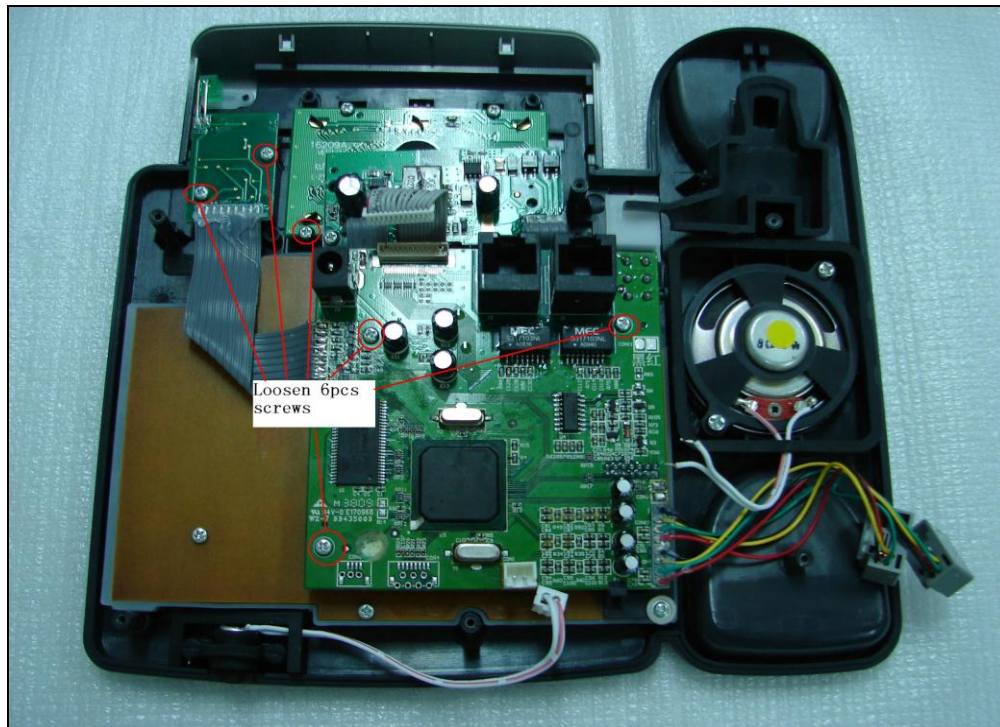
**Step3:** Pull out the male plug of the microphone and the LCD module. Remove 2pcs wires of the speaker with a hot iron.



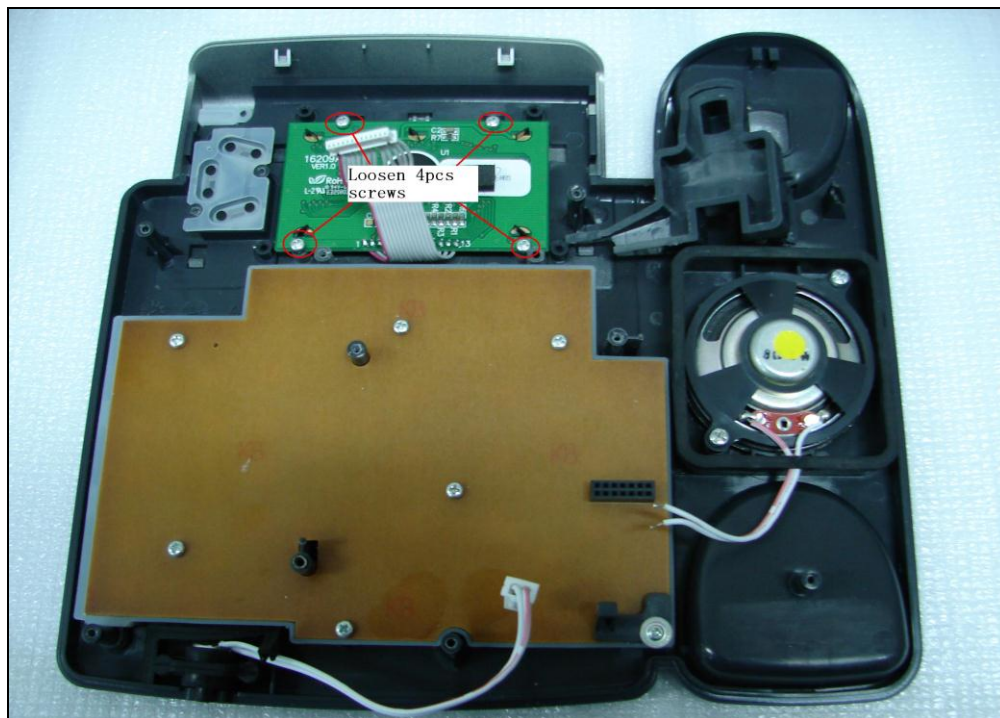


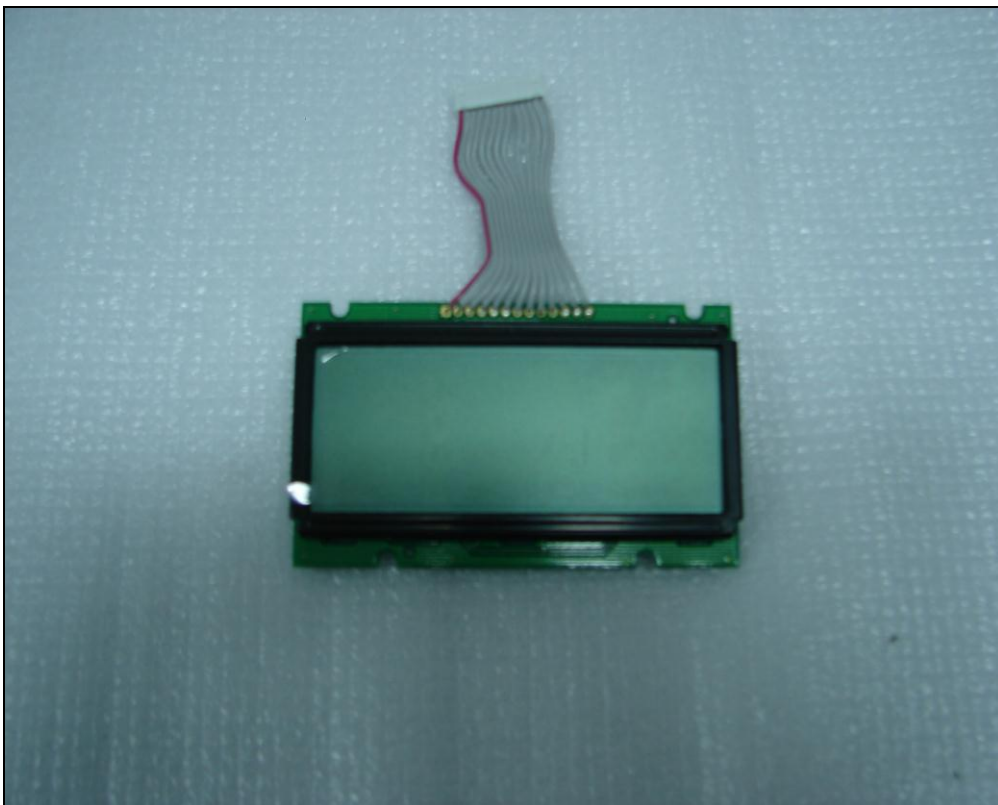
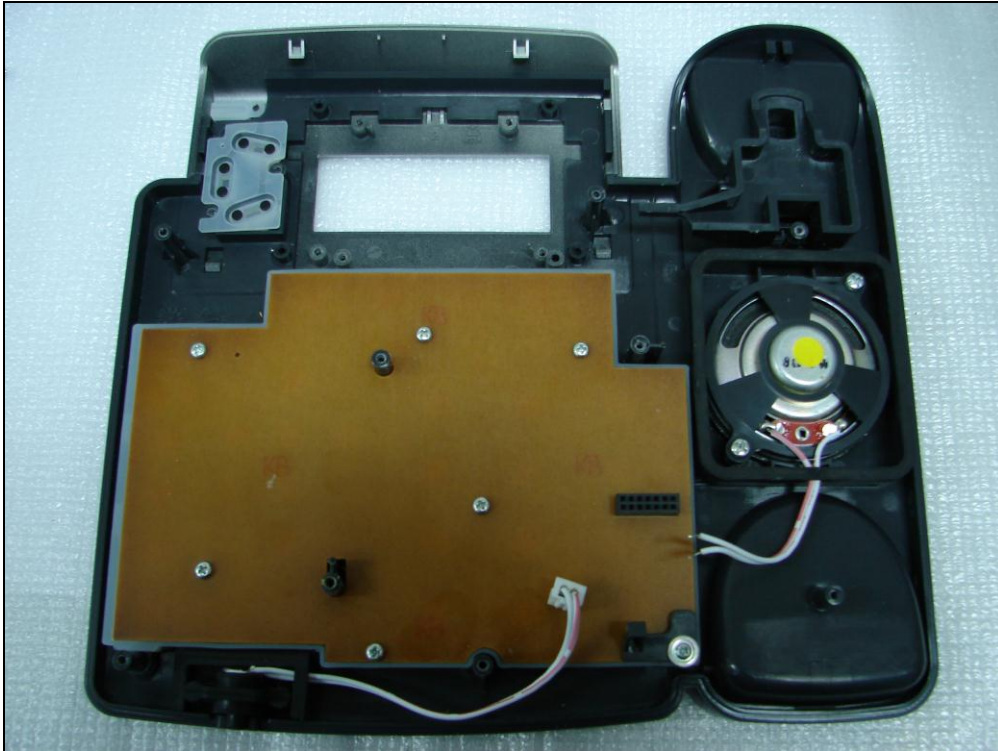
**Note:** The temperature of hot iron must be less than 350°C.

**Step4:** Loosen 6pcs of screws, take away the mainboard, PoE board and linekey board.



**Step5:** Loosen 4pcs of screws on the LCD module and take away the damaged one.





**Step6:** Install the new LCD module in the opposite way following the steps mentioned above.

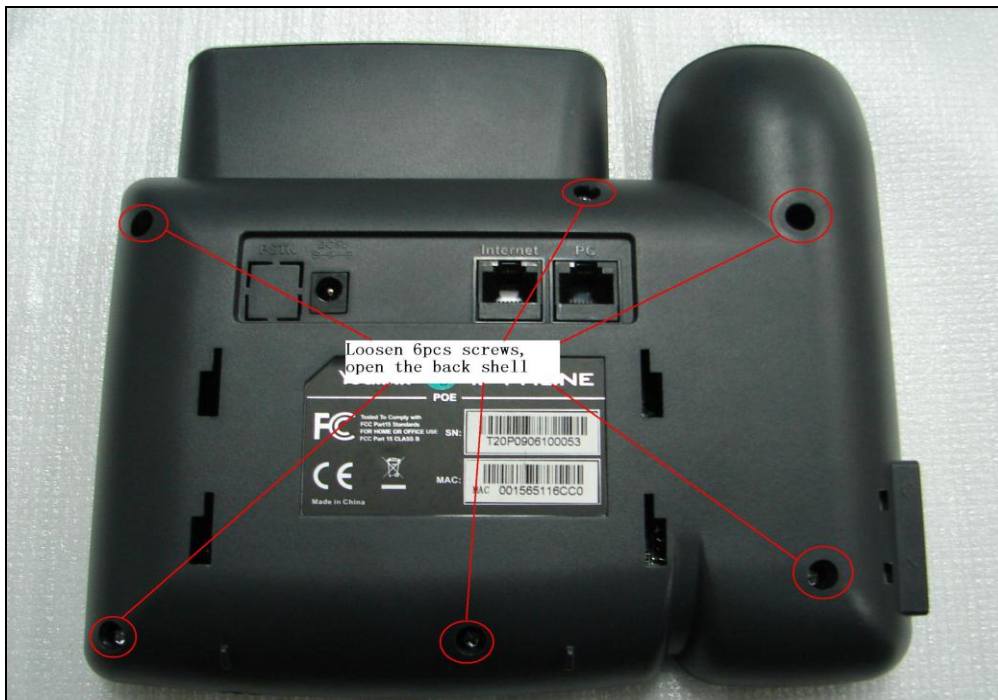


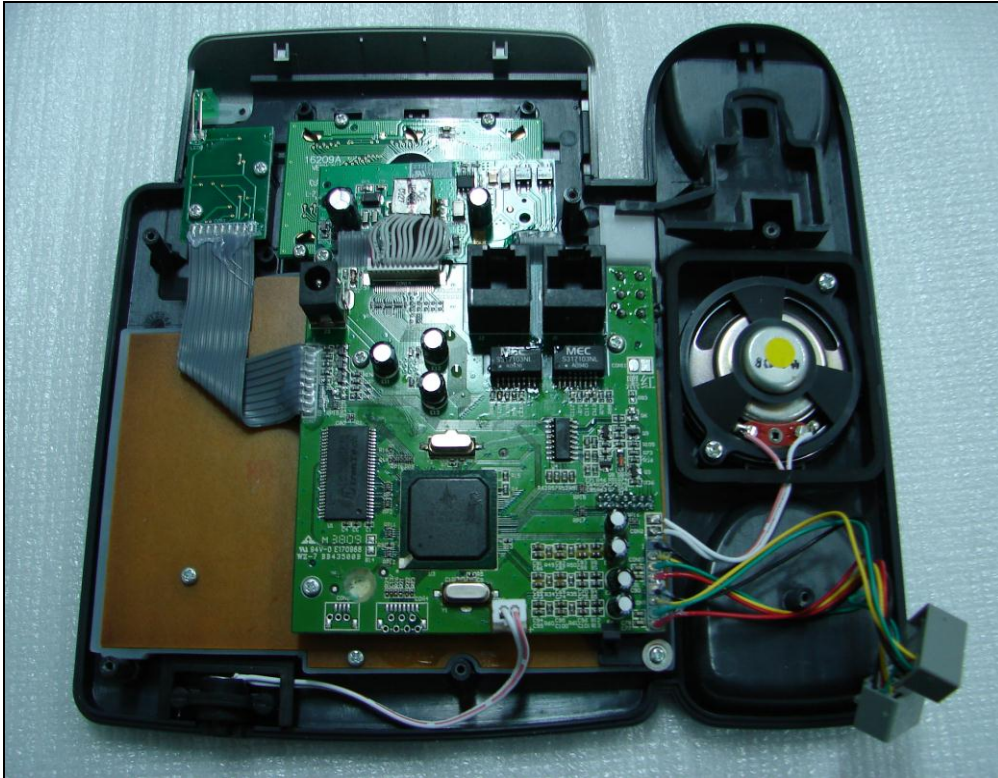
## Replace the keyboard

**Step1:** Take down the power, network cable, handset and the bracket of back shell.

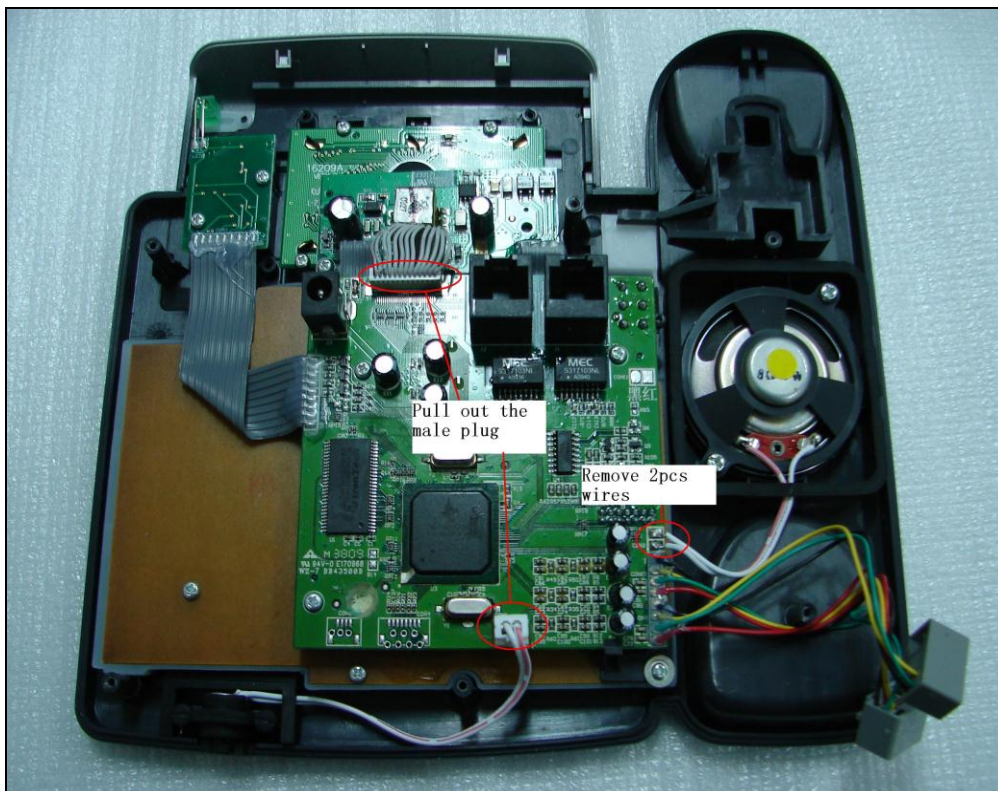


**Step2:** Loosen 6pcs of screws, open the back shell.





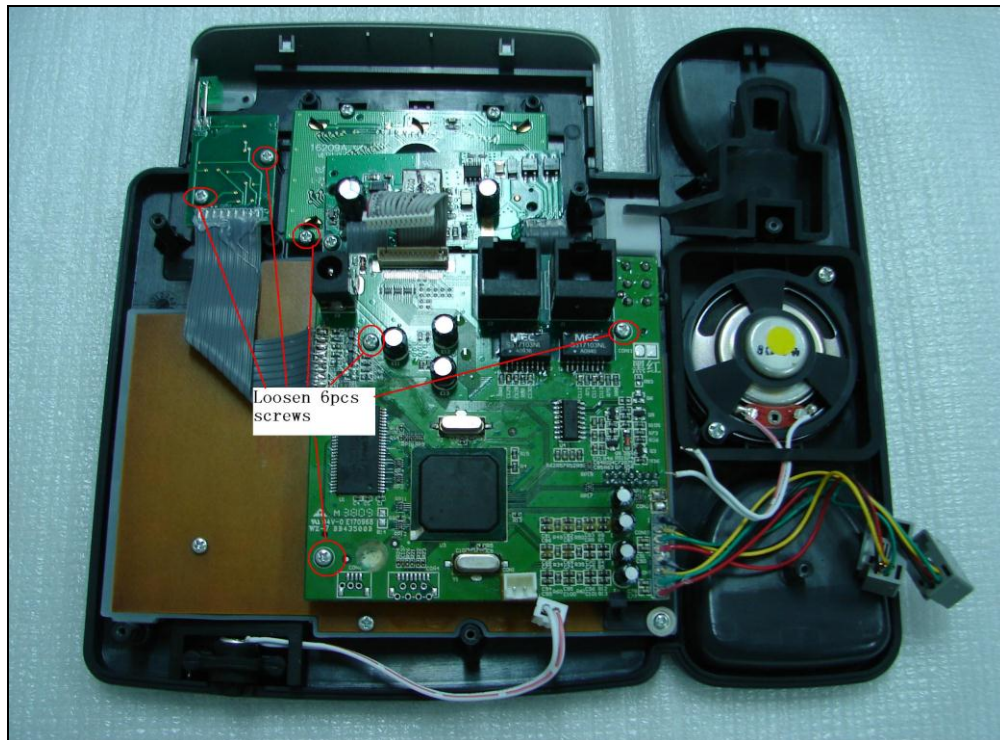
**Step3:** Pull out the male plug of the microphone and the LCD module. Remove 2pcs wires of the speaker with a hot iron.



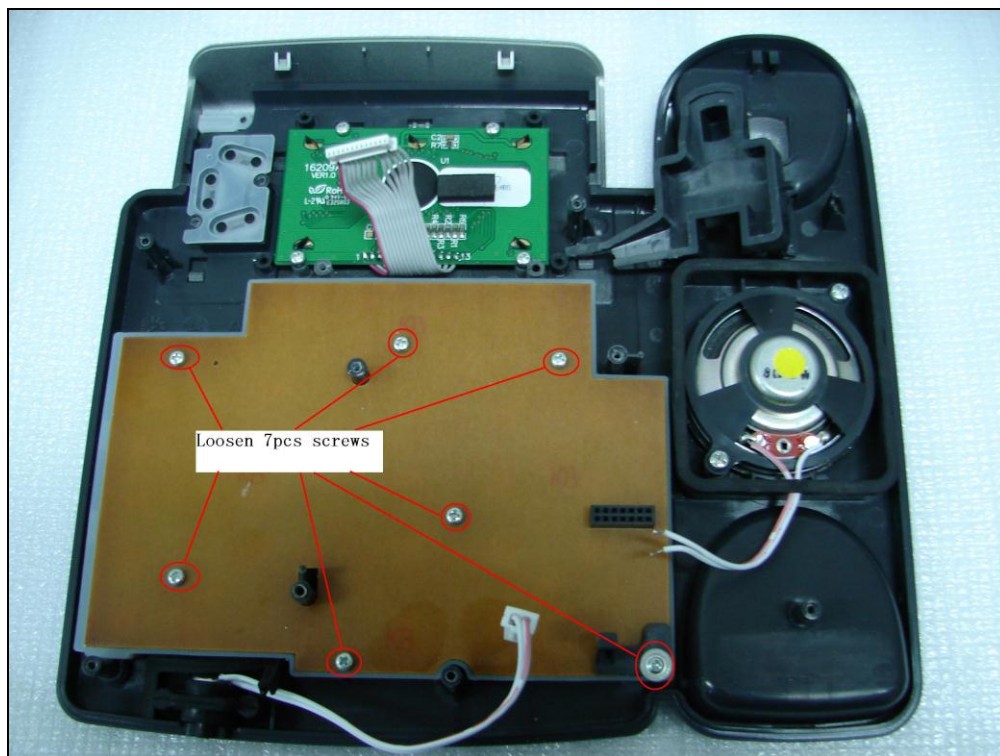


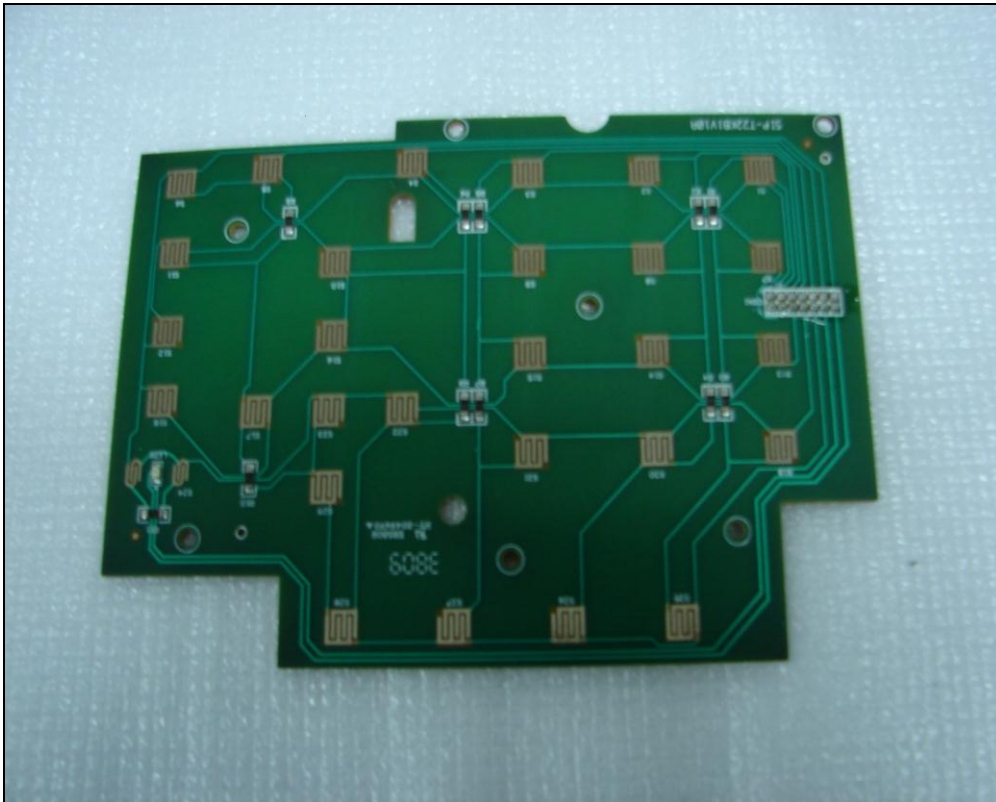
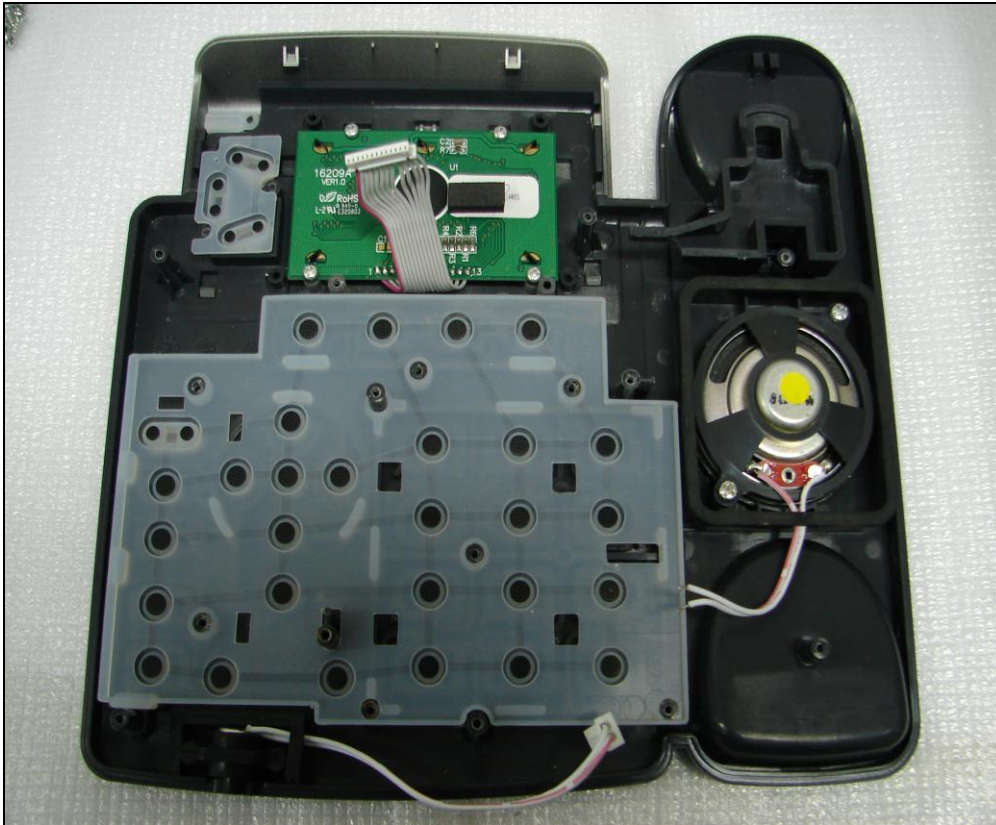
**Note:** The temperature of hot iron must be less than 350°C.

**Step4:** Loosen 6pcs of screws and take away the mainboard, Poe board, linekey board.



**Step5:** Loosen 7pcs of screws and take away the damaged keyboard.





**Step6:** Install the new keyboard in the opposite way following the steps mentioned above.

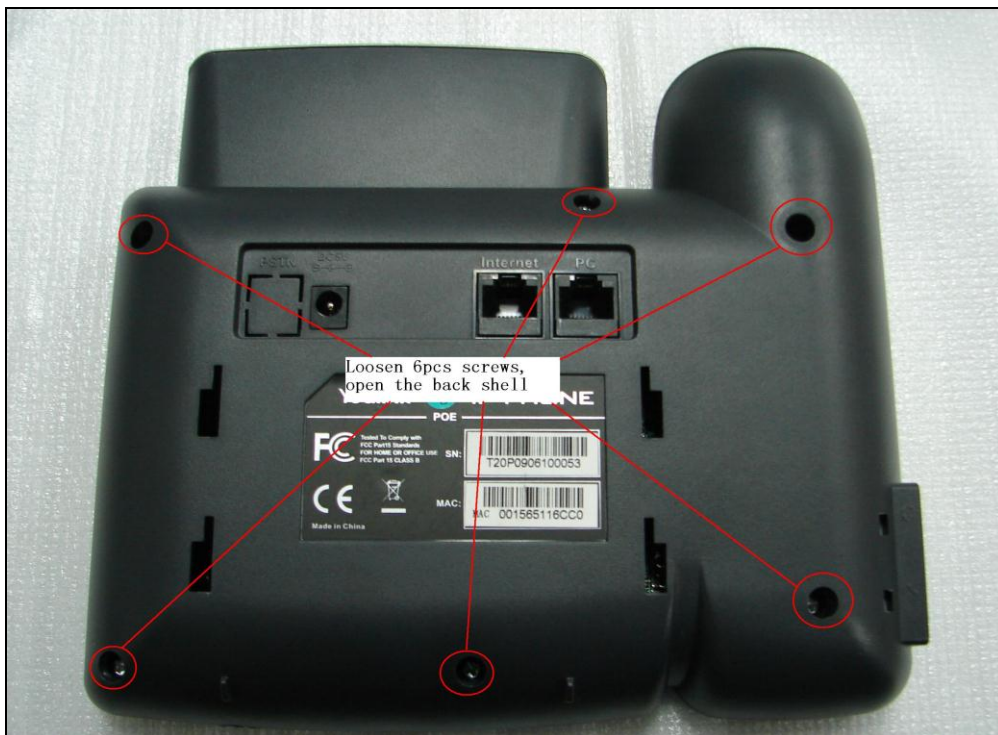


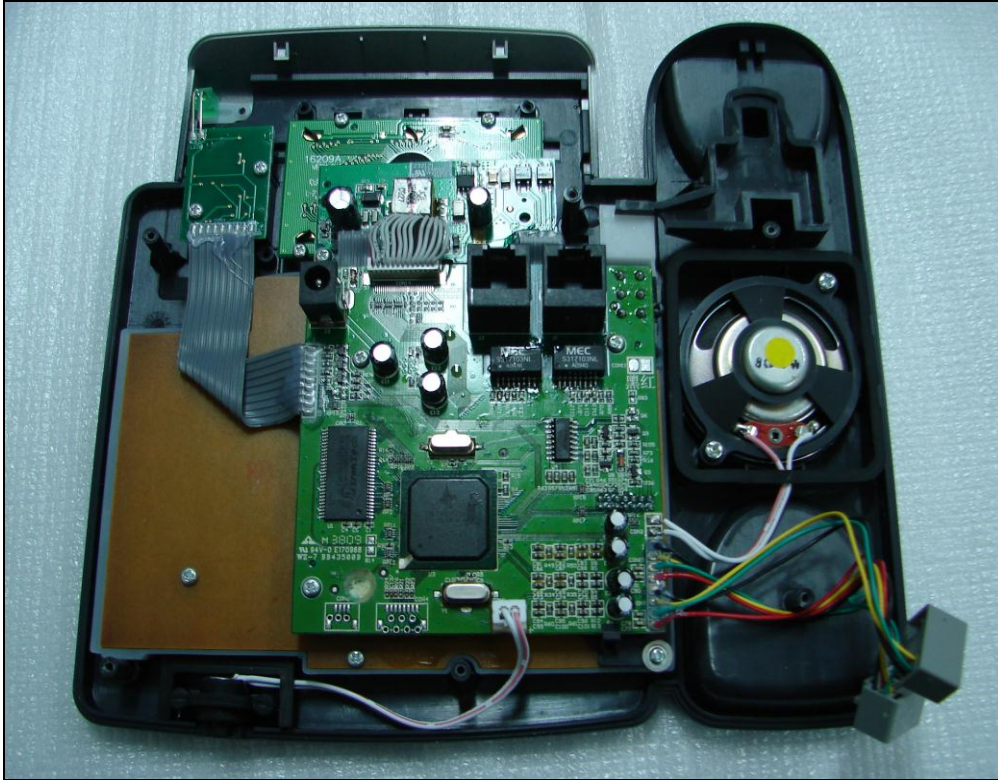
## Replace the speaker

**Step1:** Take down the power, network, handset and the bracket of back shell.

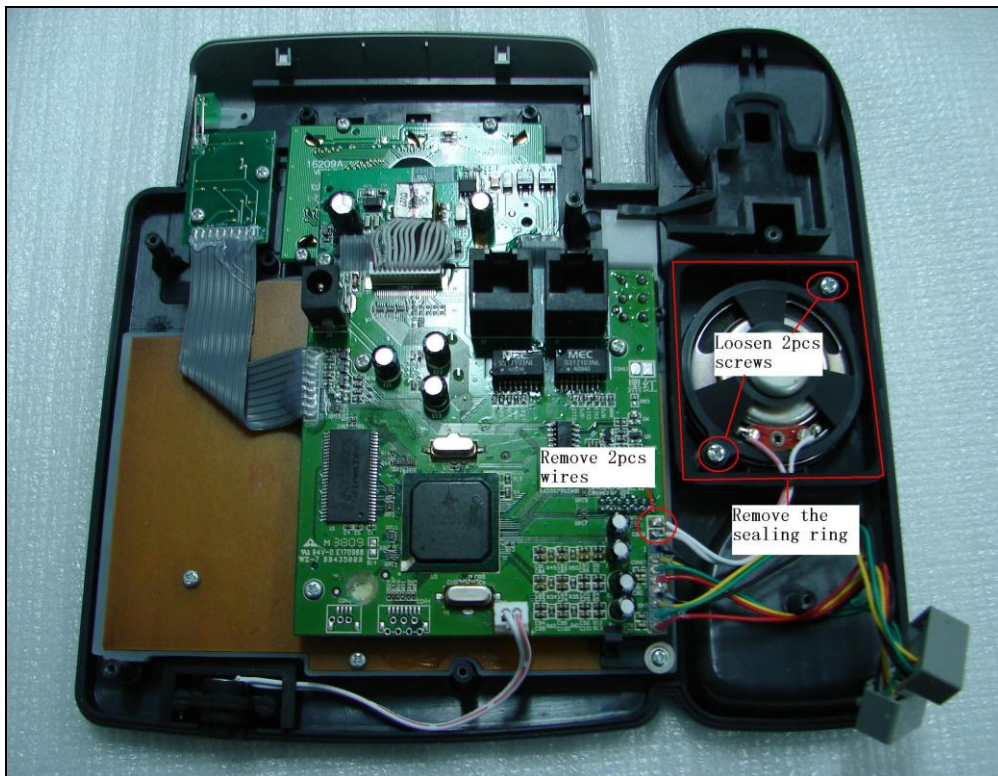


**Step2:** Loosen 6pcs of screws, open the back shell.



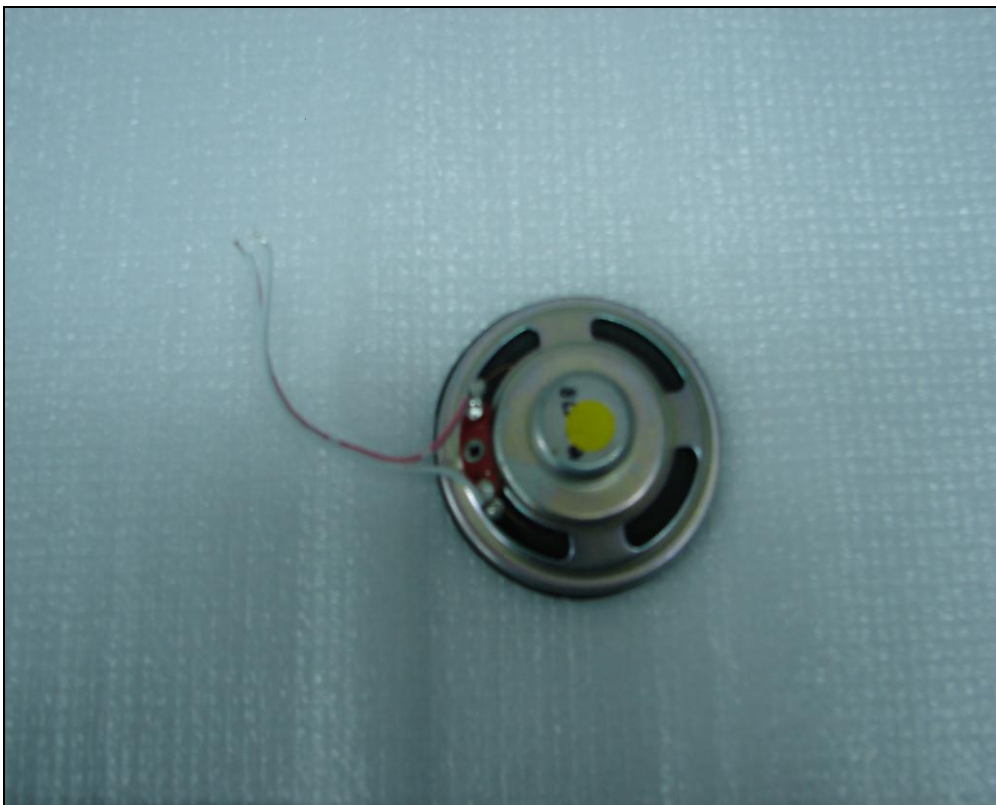
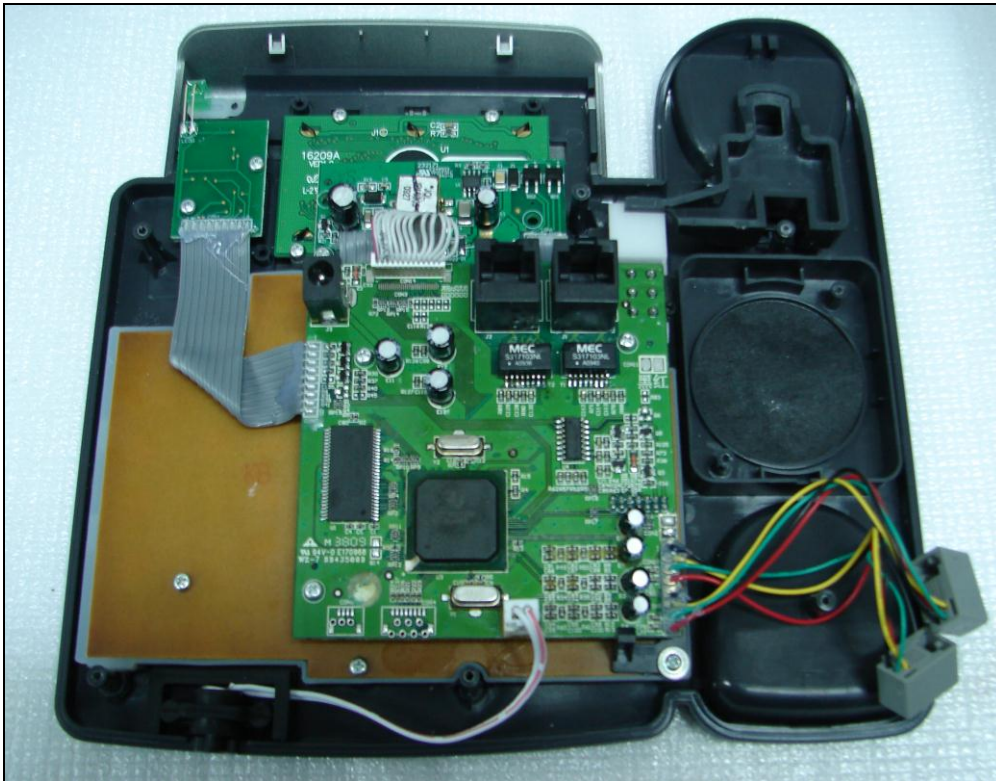


**Step3:** Remove 2pcs wires of the speaker with a hot iron and the sealing ring. Loosen 2pcs of screws and take away the damaged one.



**Note:** The temperature of hot iron must be less than 350°C.





**Step4:** Install the new speaker in the opposite way following the steps mentioned above.