

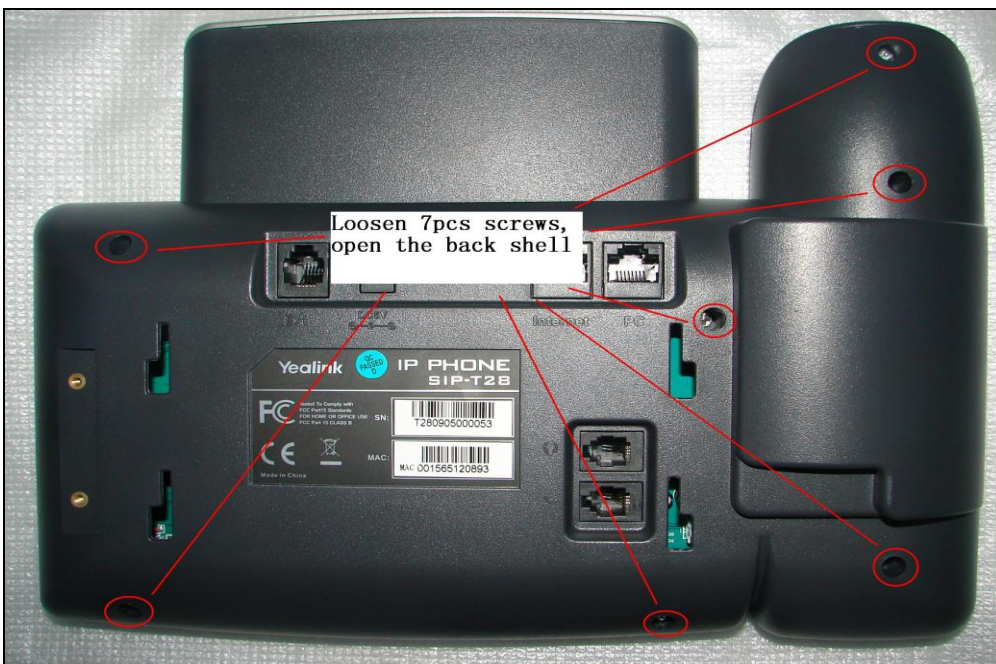
## How to replace SIP-T28(P)'s hardware components

### Replace the mainboard

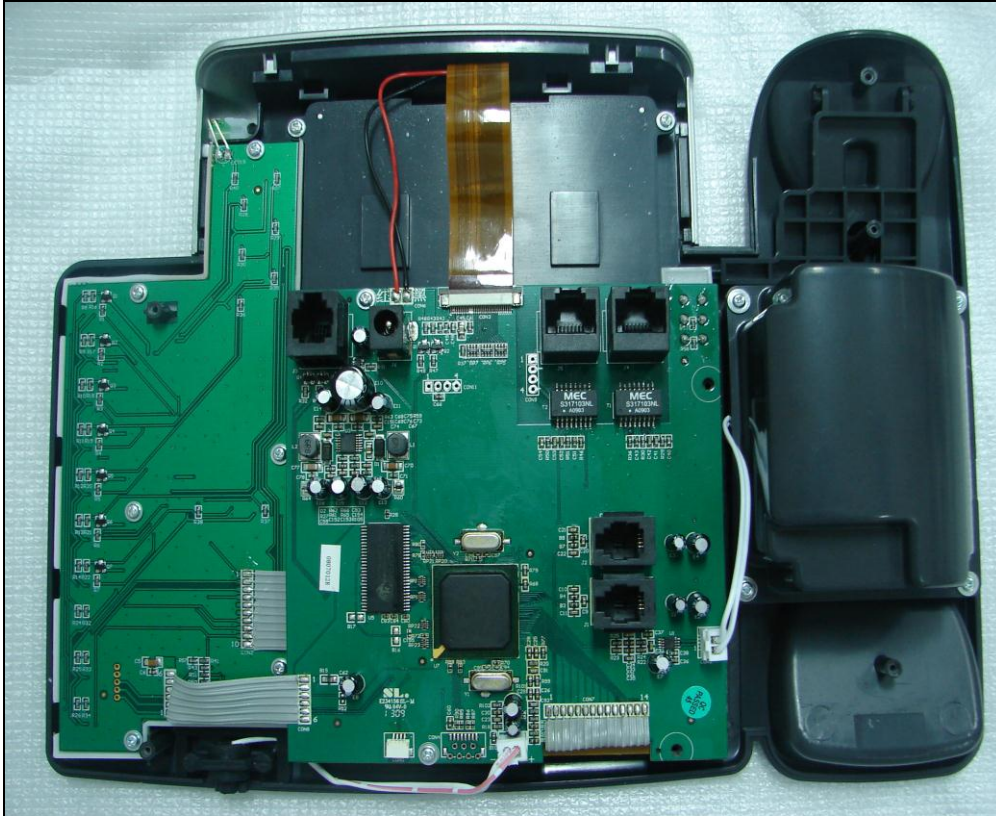
**Step1:** Take down the power, network, handset and the bracket of back shell.



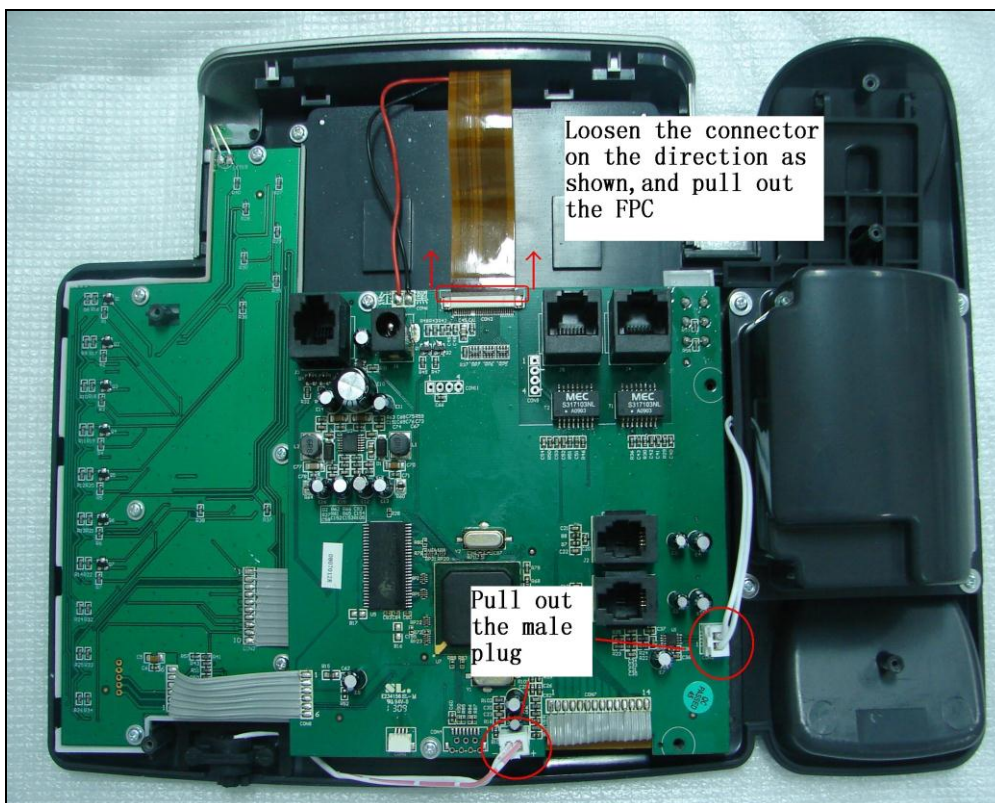
**Step2:** Loosen 7pcs of screws, open the back shell.



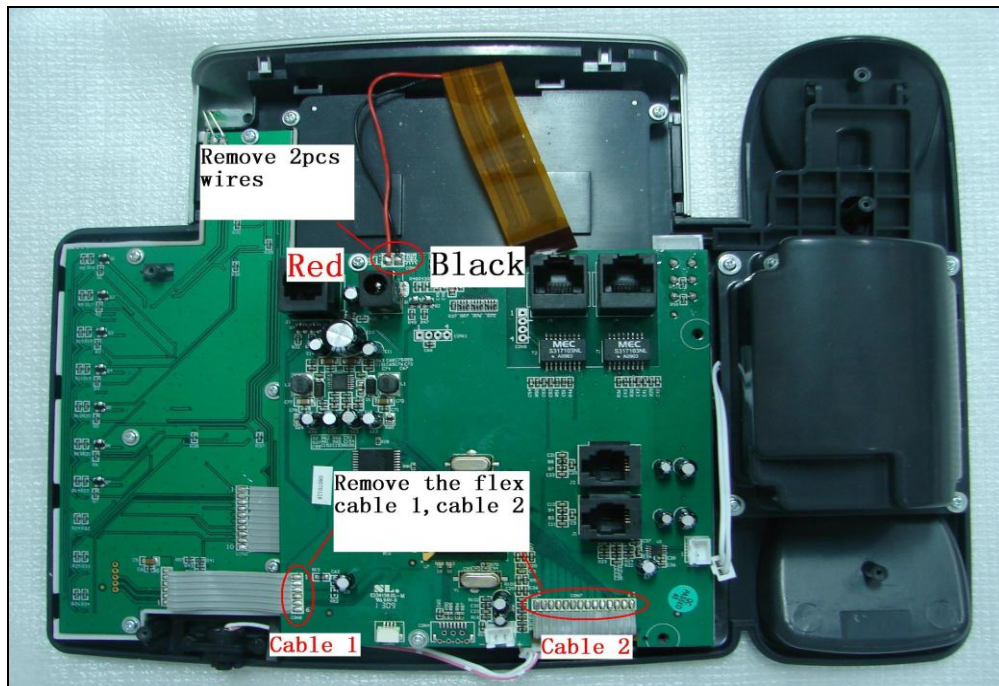




**Step3:** Pull out the male plug of the microphone and speaker, loosen the connector of the LCD module on the direction as shown, and pull out the FPC.

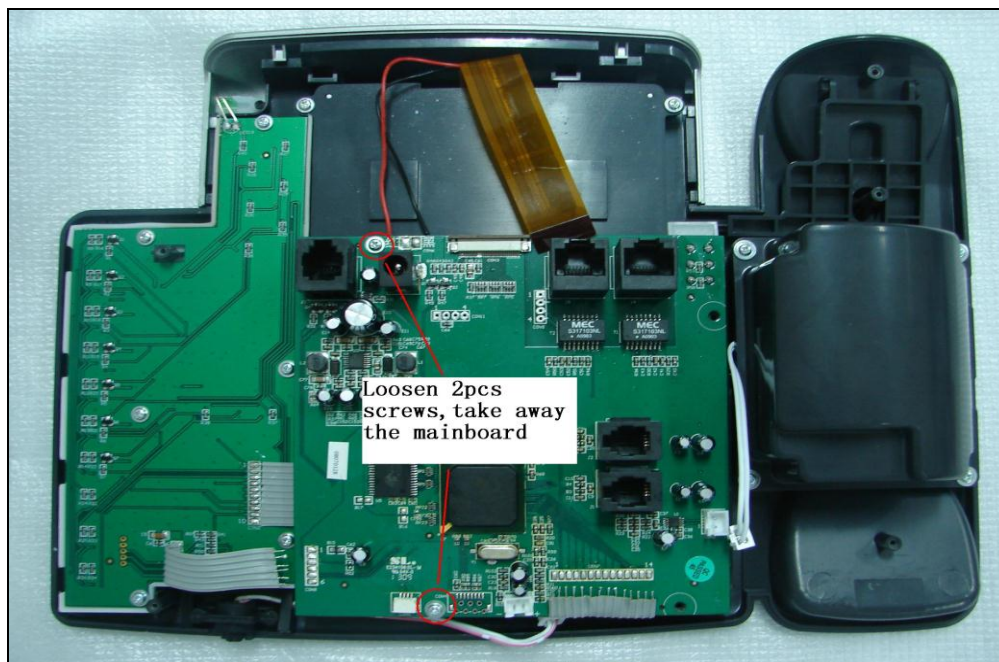


**Step4:** Remove the flex cable1, cable 2 and the wire of LCD backlight with a hot iron.

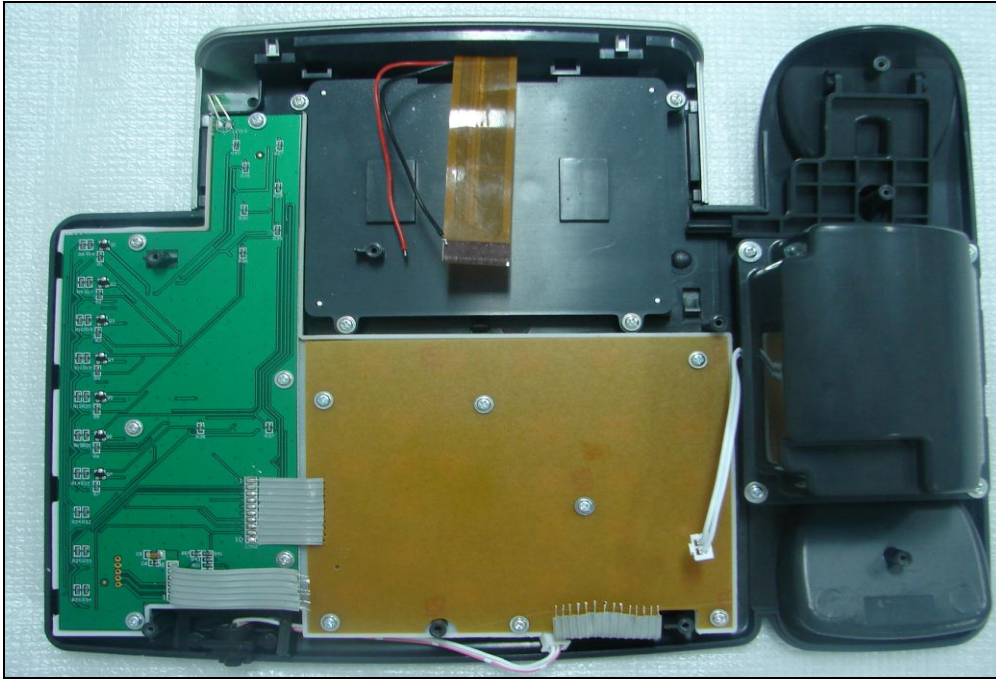


**Note:** 1. The temperature of hot iron must be less than 350℃;  
2. 2pcs of LCD backlight wire, the left one is red, and the right one is black.

**Step5:** Loosen 2pcs of screws on the mainboard, and take away the damaged one.







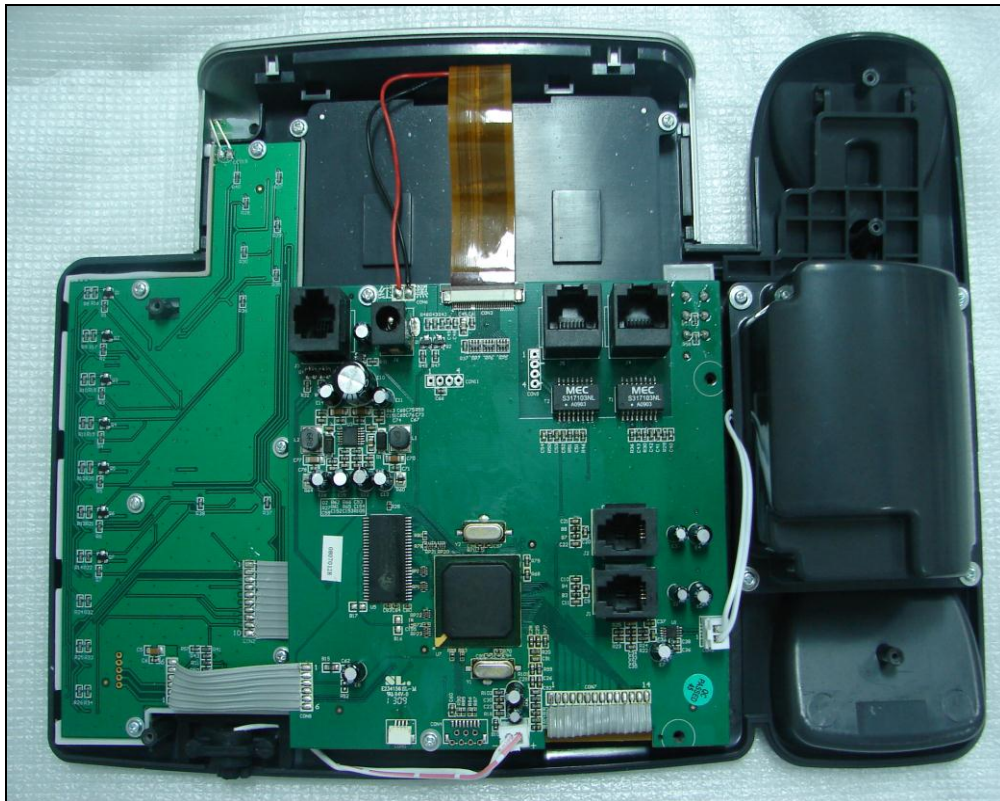
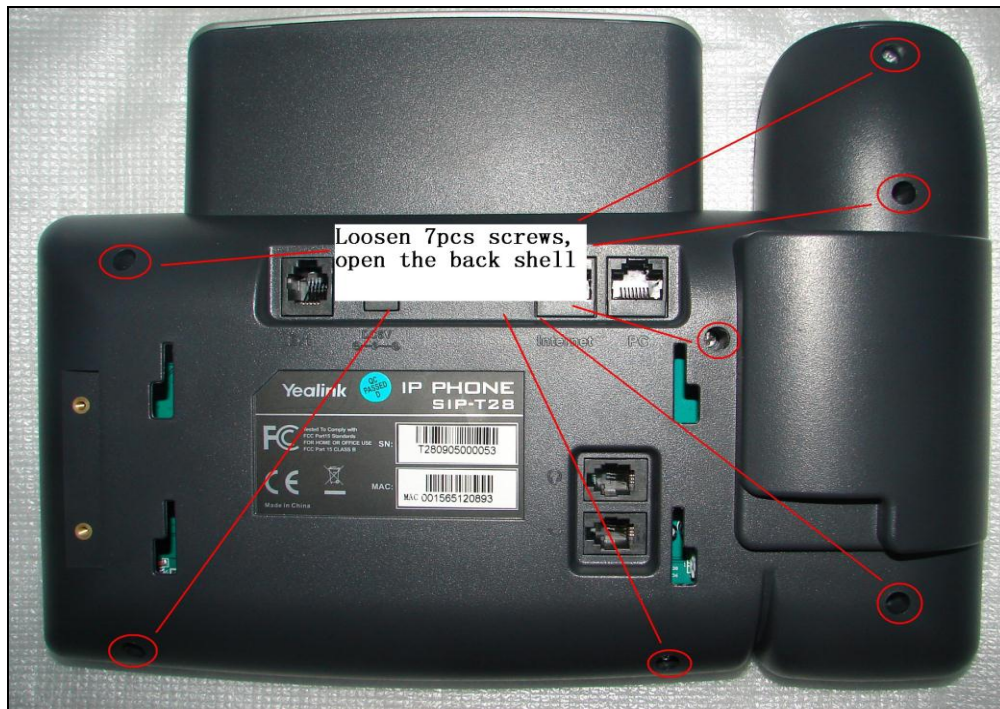
**Step6:** Install the new mainboard in the opposite way following the steps mentioned above.

## Replace the LCD module

**Step1:** Take down the power, network, handset and the bracket of back shell.

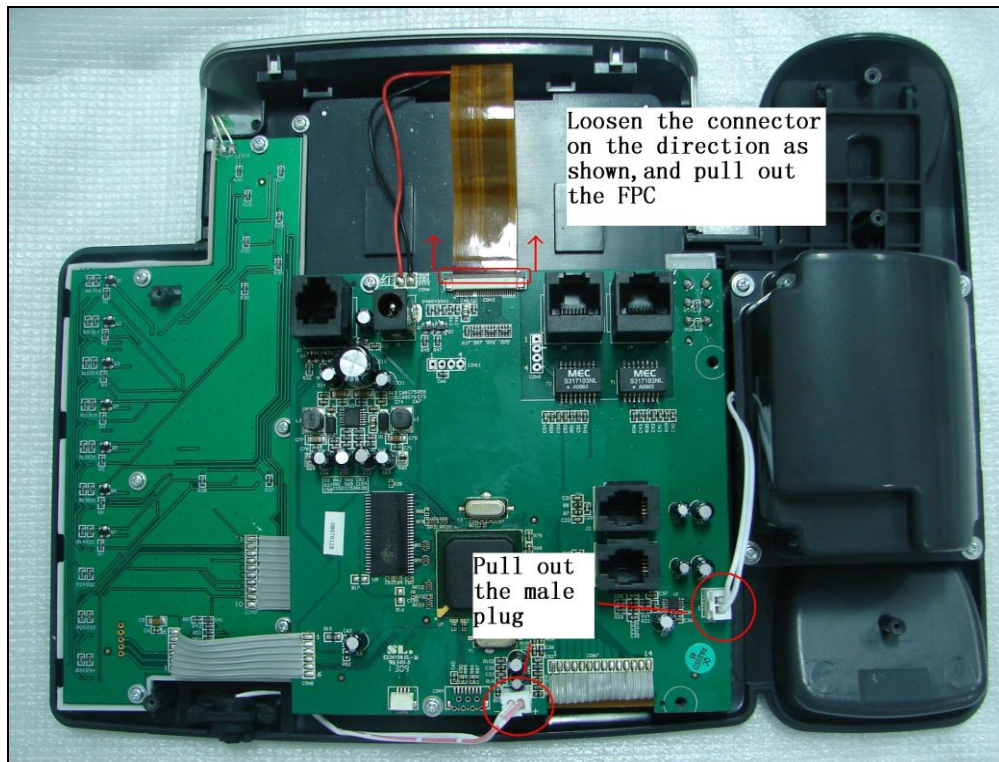


**Step2:** Loosen 7pcs of screws, open the back shell.

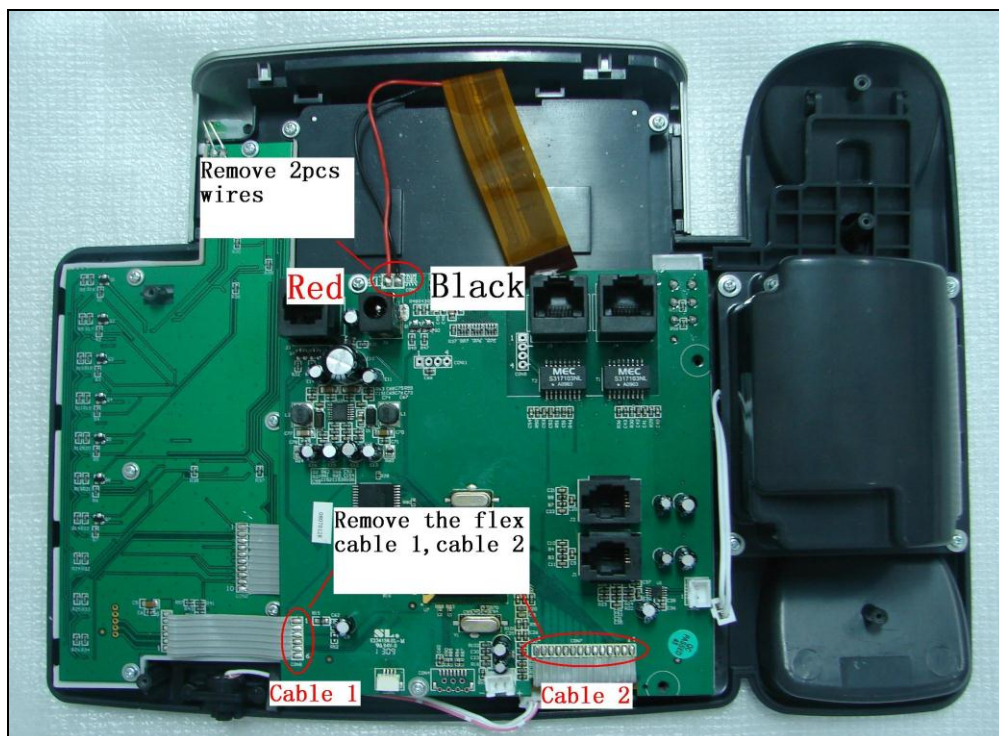


**Step3:** Pull out the male plug of the microphone and speaker, loosen the connector of the LCD module on the direction as shown, and pull out the FPC.





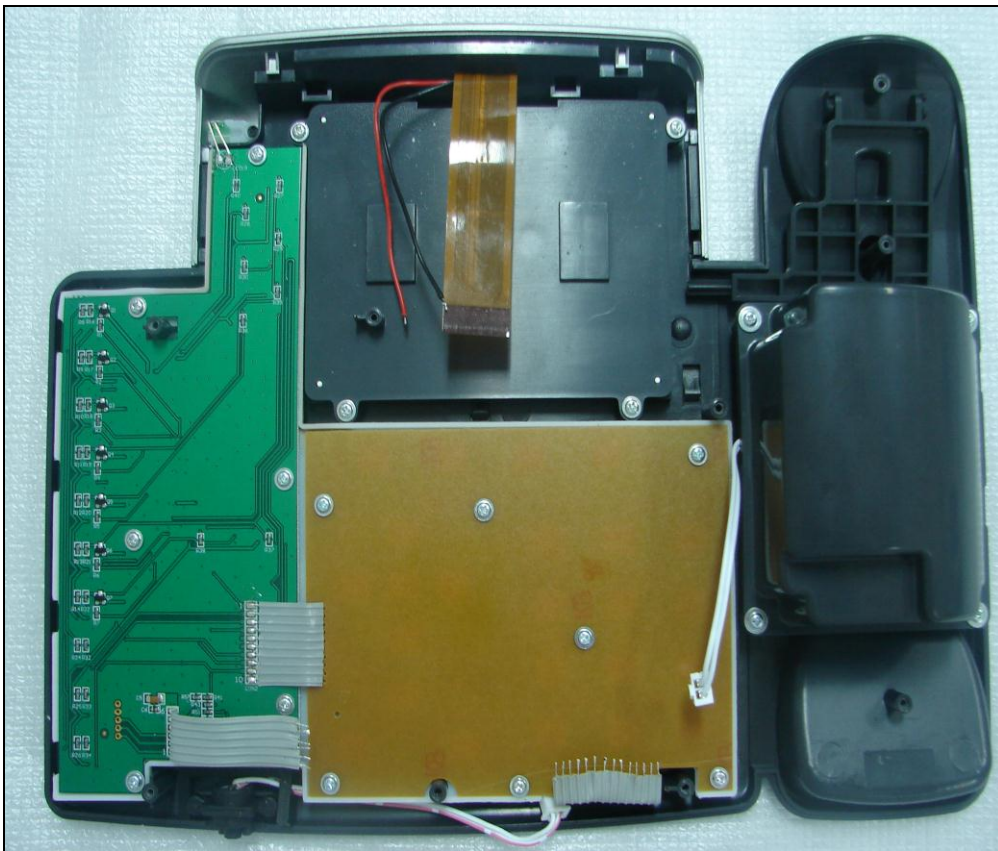
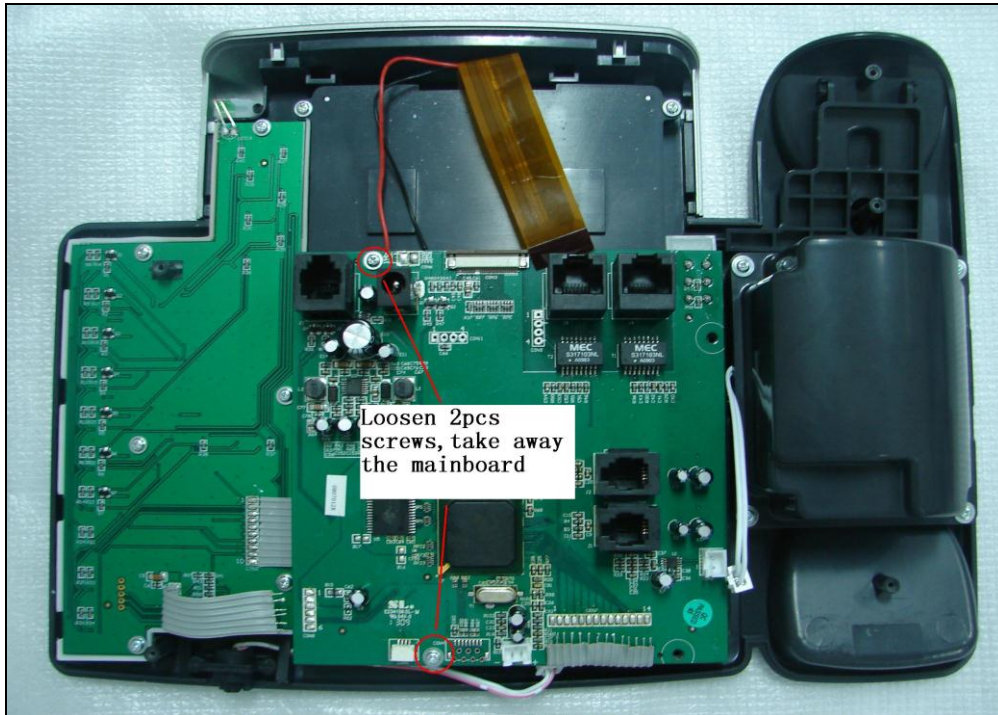
**Step4:** Remove the flex cable1, cable 2 and the wire of LCD backlight with a hot iron.



**Note:**

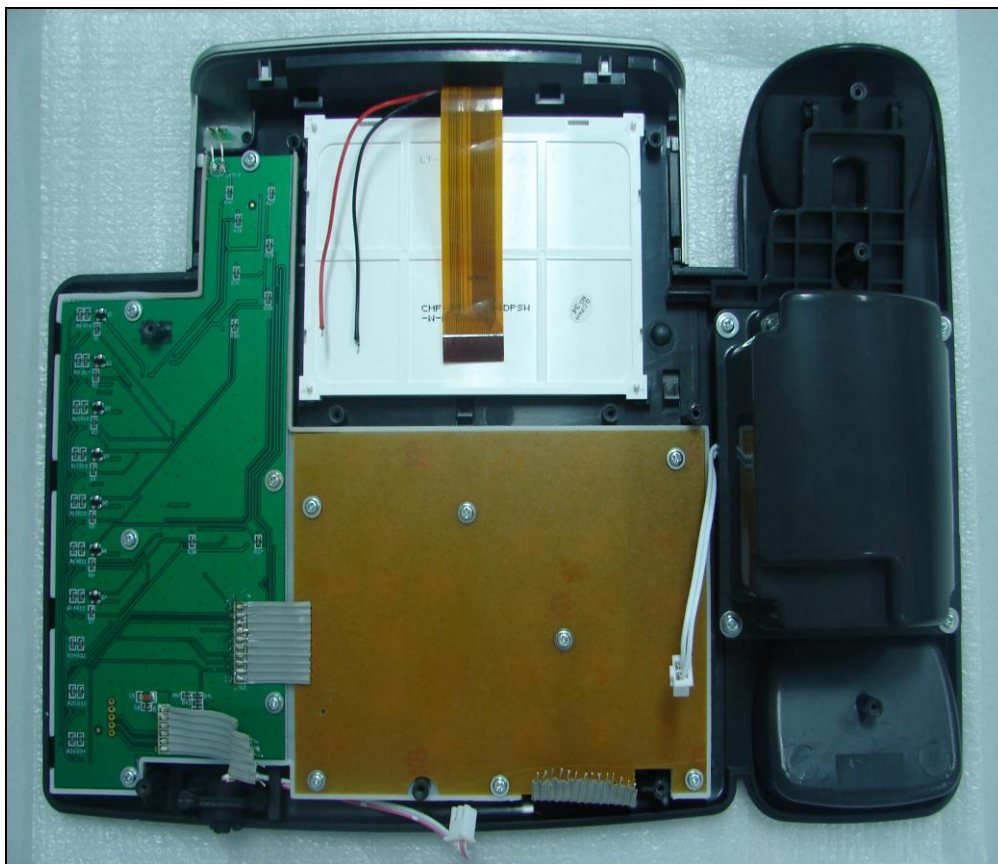
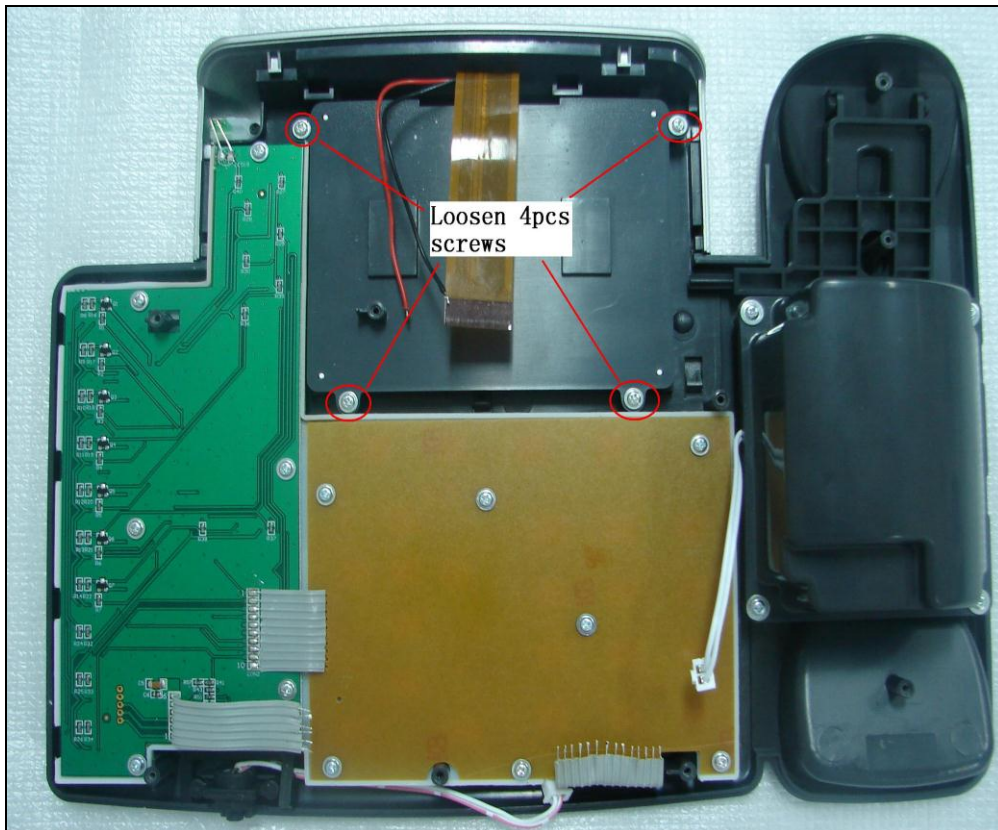
1. The temperature of hot iron must be less than 350°C;
2. 2pcs of LCD backlight wires, the left one is red, and the right one is black.

**Step5:** Loosen 2pcs of screws on the mainboard, and take away the mainboard.



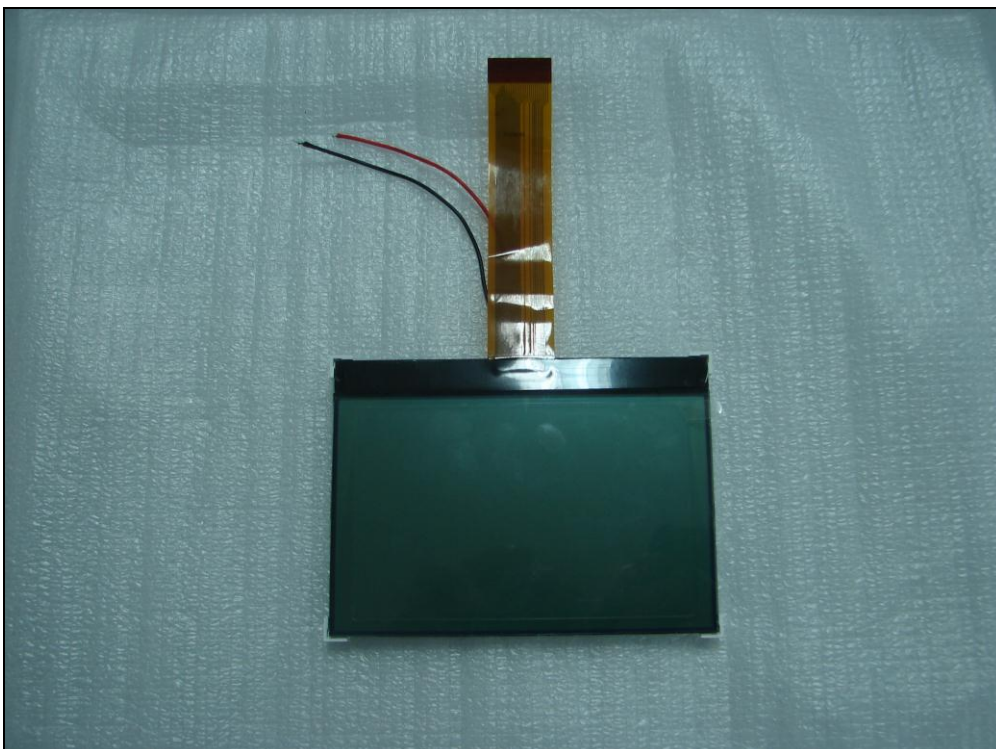
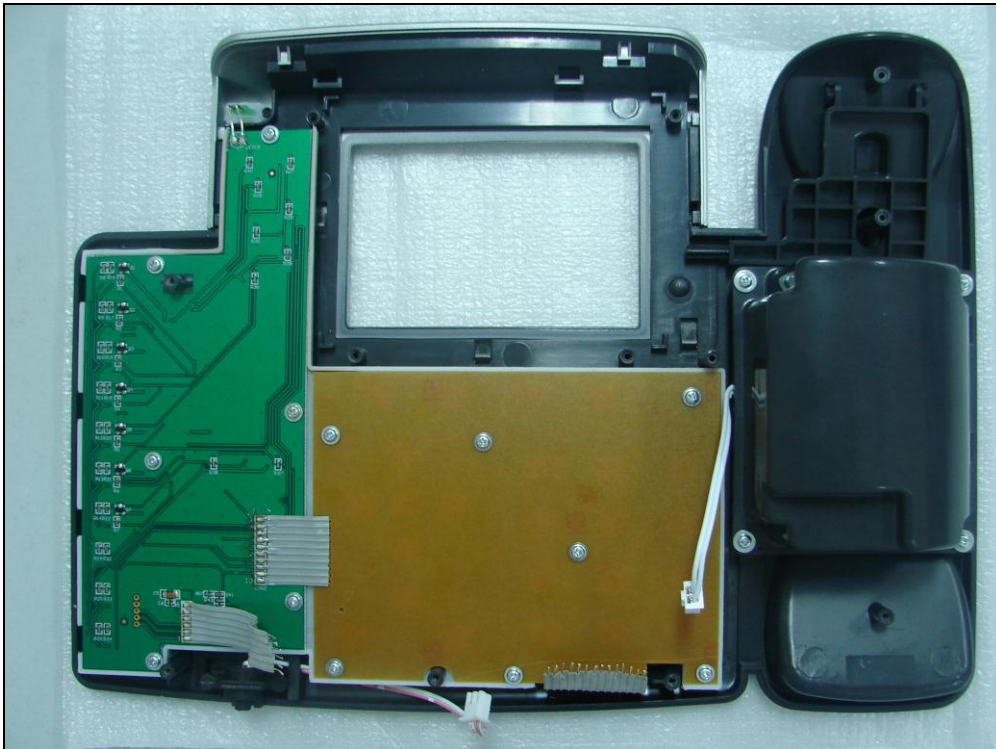


**Step6:** Loosen 4pcs of screws on the LCD module, and take away the plastic baffle board.





**Step7:** Take away the damaged LCD module.



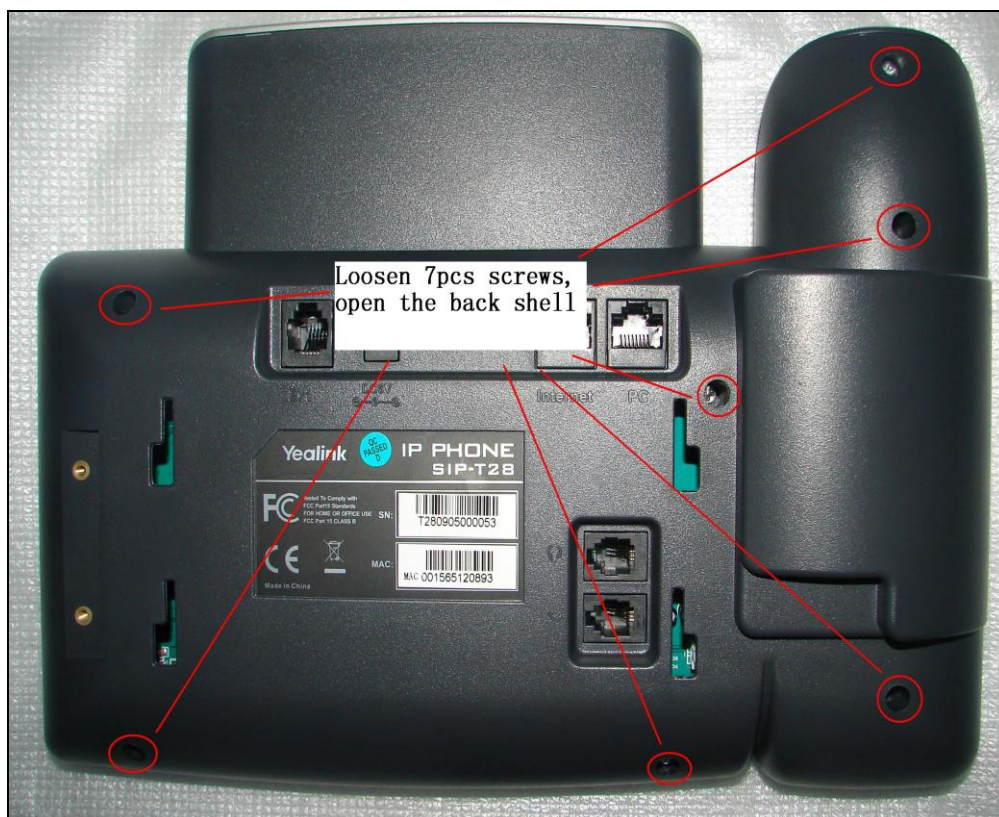
**Step8:** Install the new LCD module in the opposite way following the steps mentioned above.

## Replace the DSS keyboard

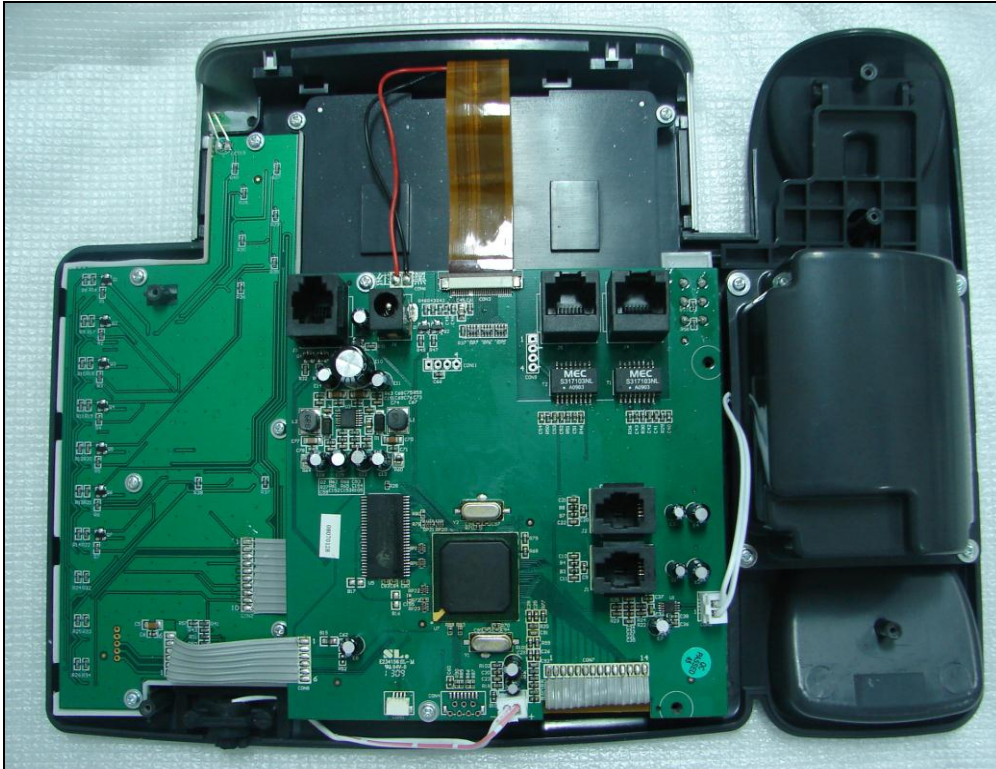
**Step1:** Take down the power, network, handset and the bracket of back shell.



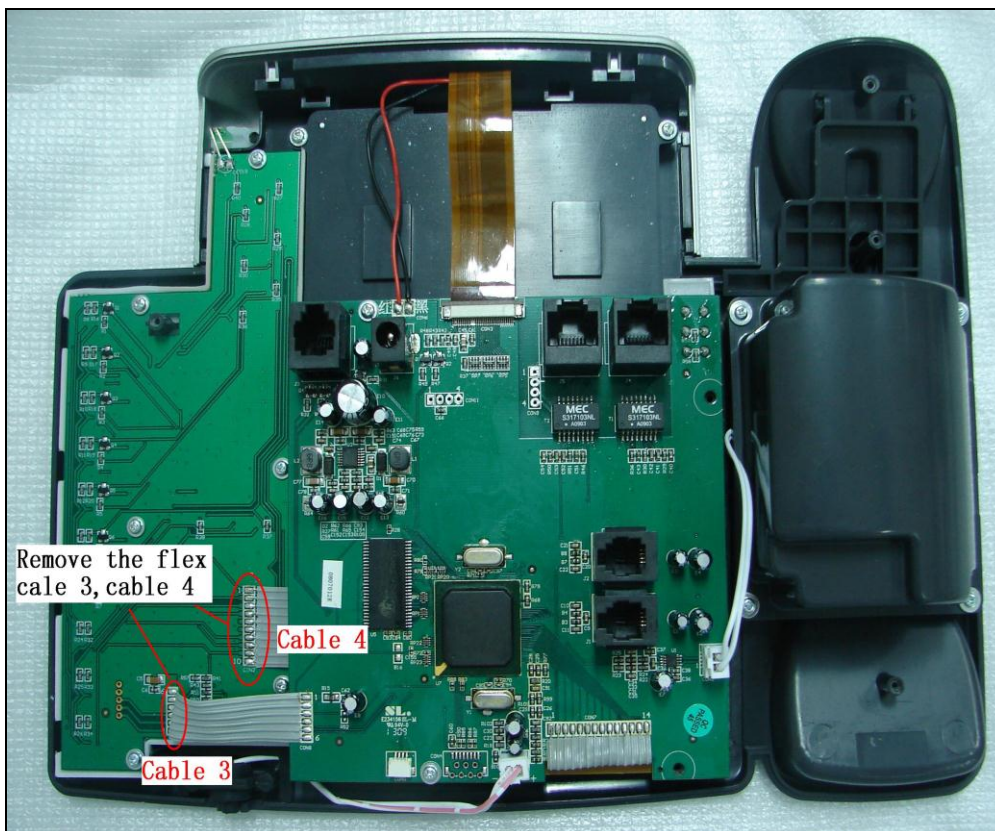
**Step2:** Loosen 7pcs of screws, open the back shell.







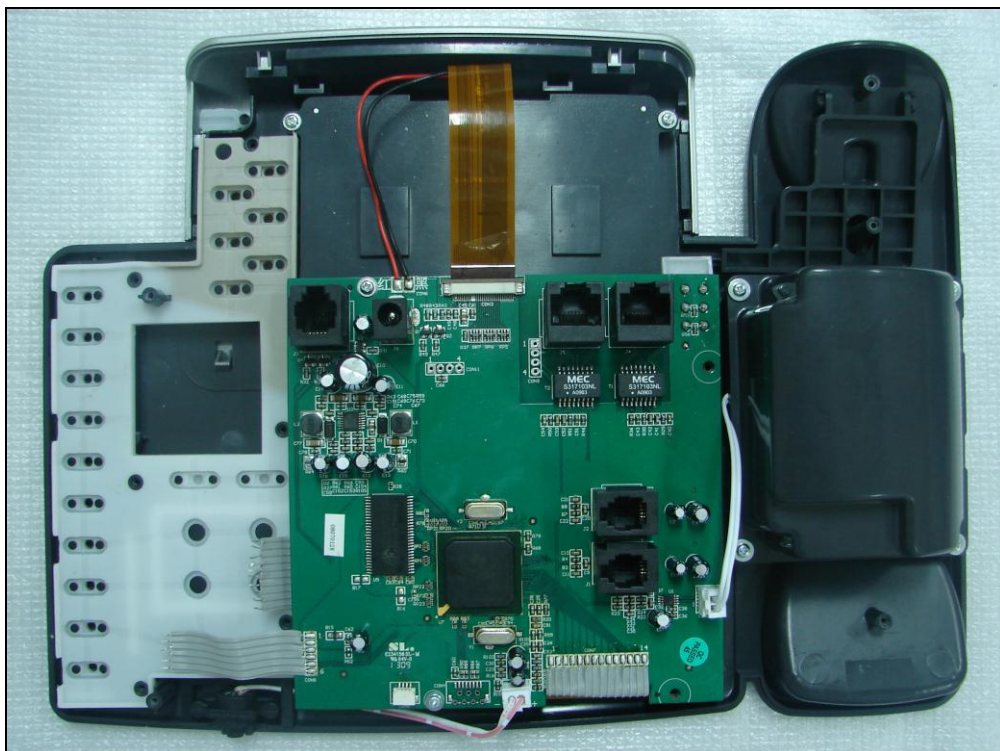
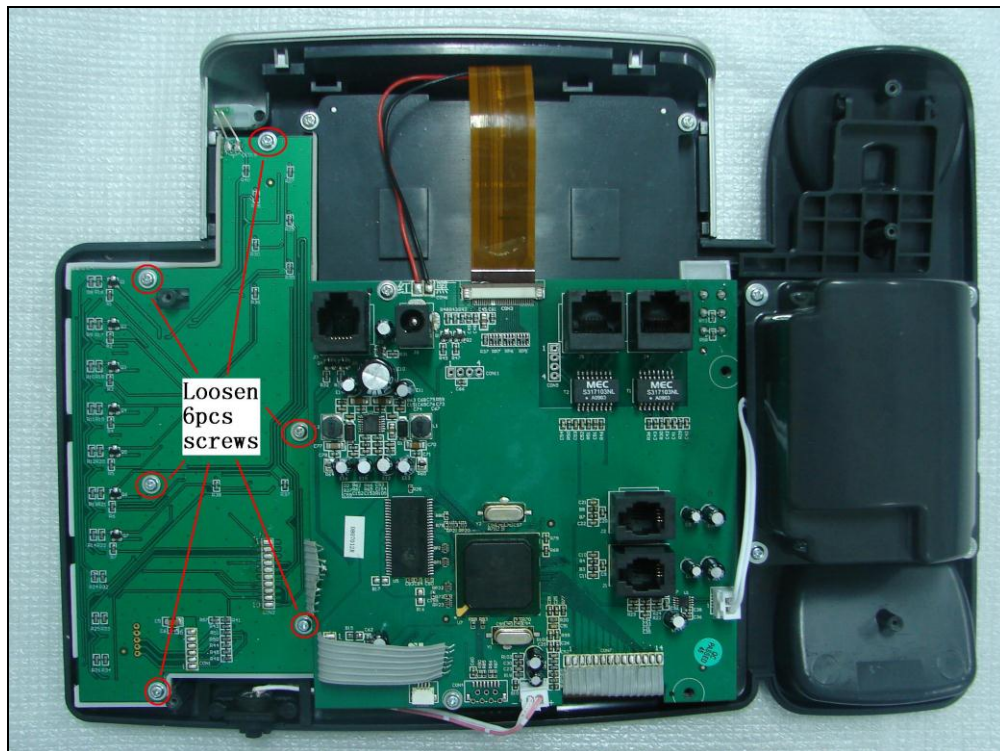
**Step3:** Remove the flex cable3 and cable 4 with a hot iron.



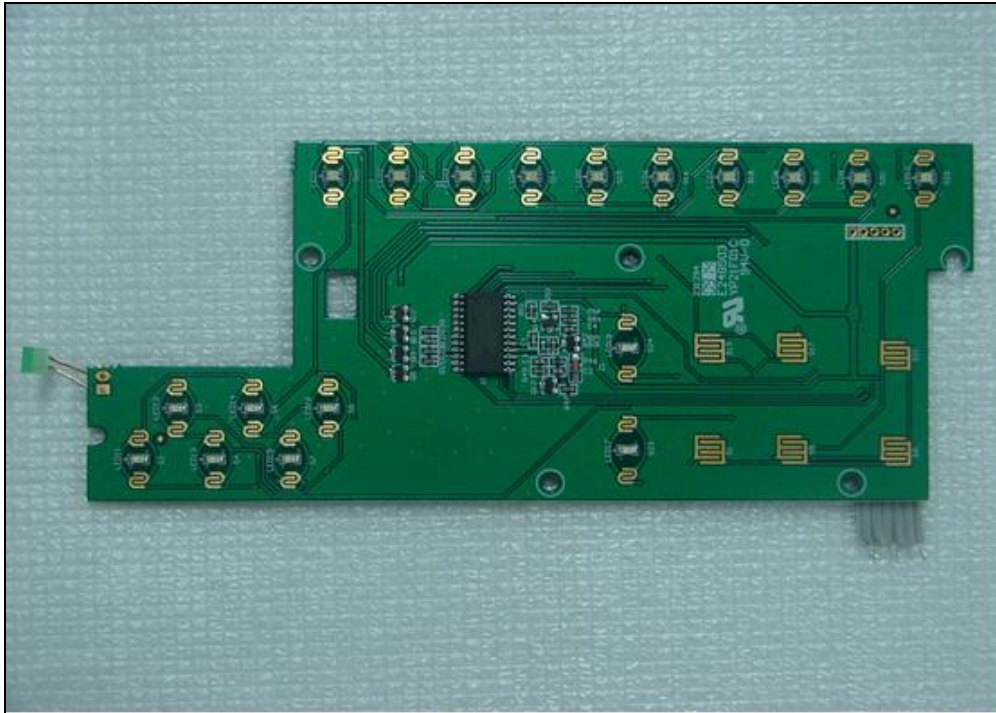
**Note:** The temperature of hot iron must be less than 350°C.



**Step4:** Loosen 6pcs of screws on the DSS keyboard, and take away the damaged DSS keyboard.







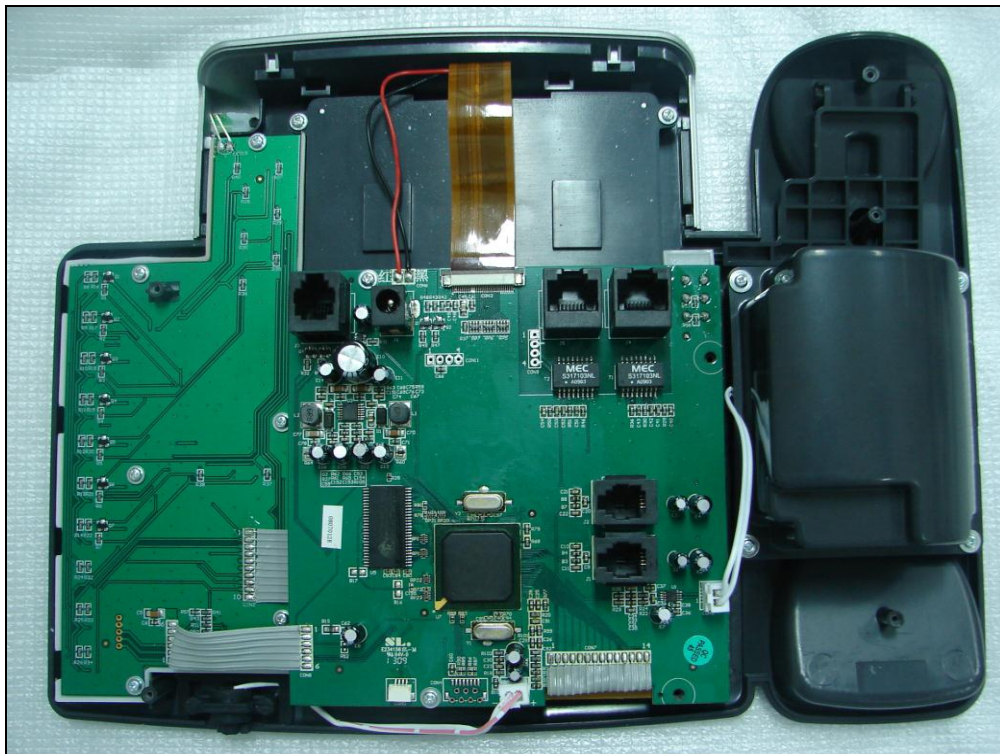
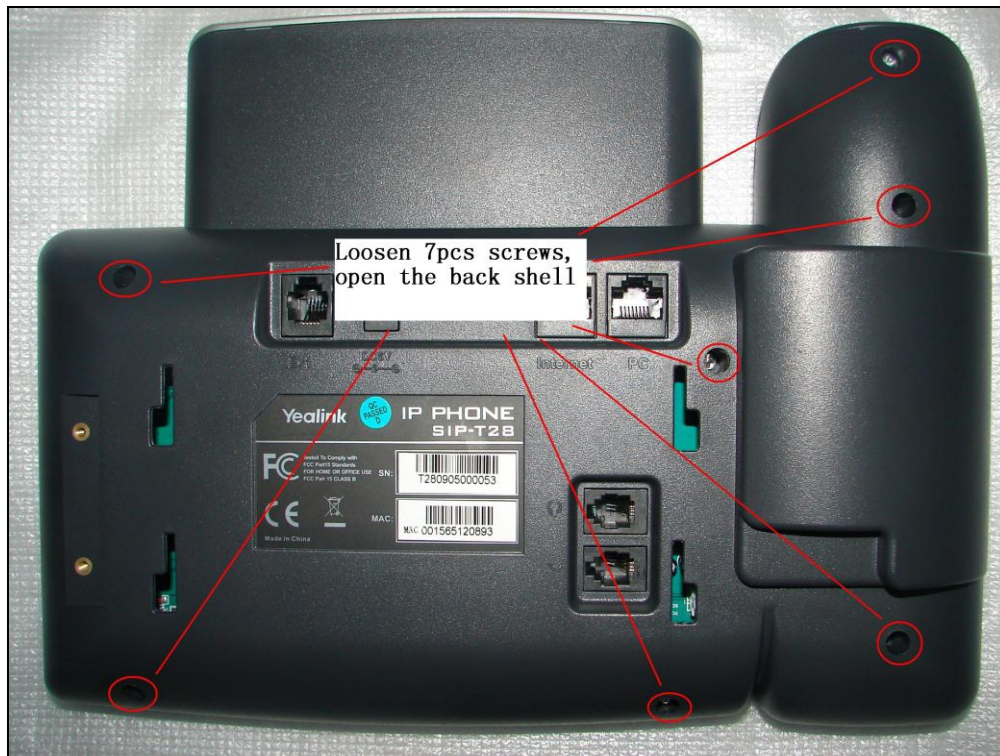
**Step5:** Install the new DSS keyboard in the opposite way following the steps mentioned above.

## Replace the keyboard

**Step1:** Take down the power, network, handset and the bracket of back shell.

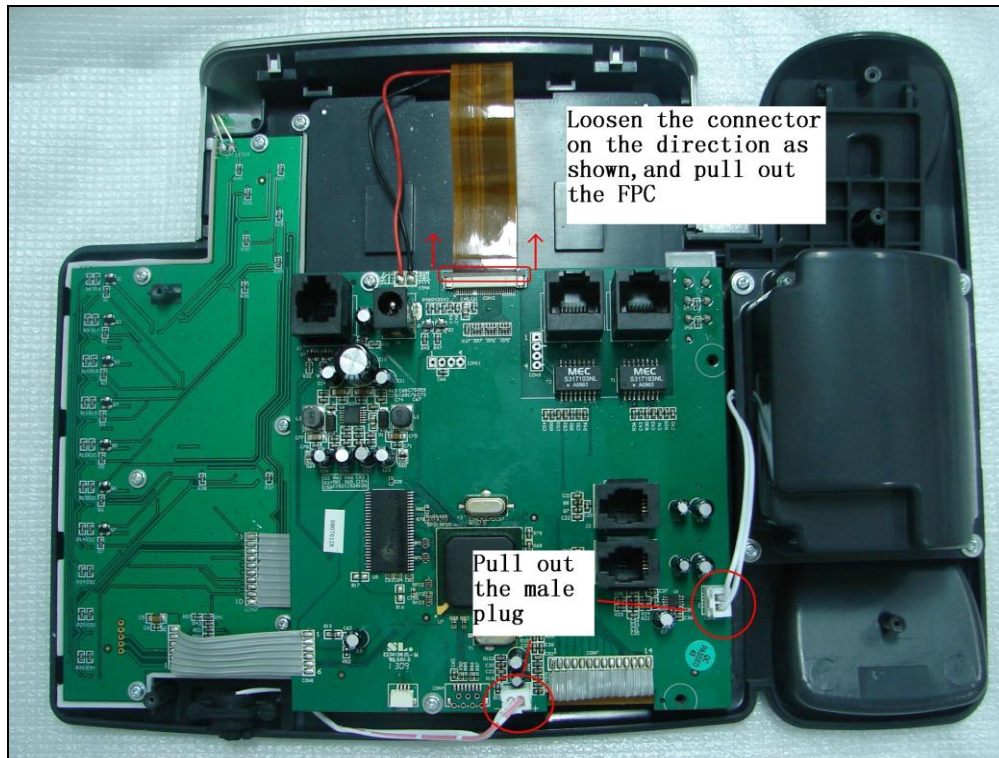


**Step2:** Loosen 7pcs of screws, open the back shell.

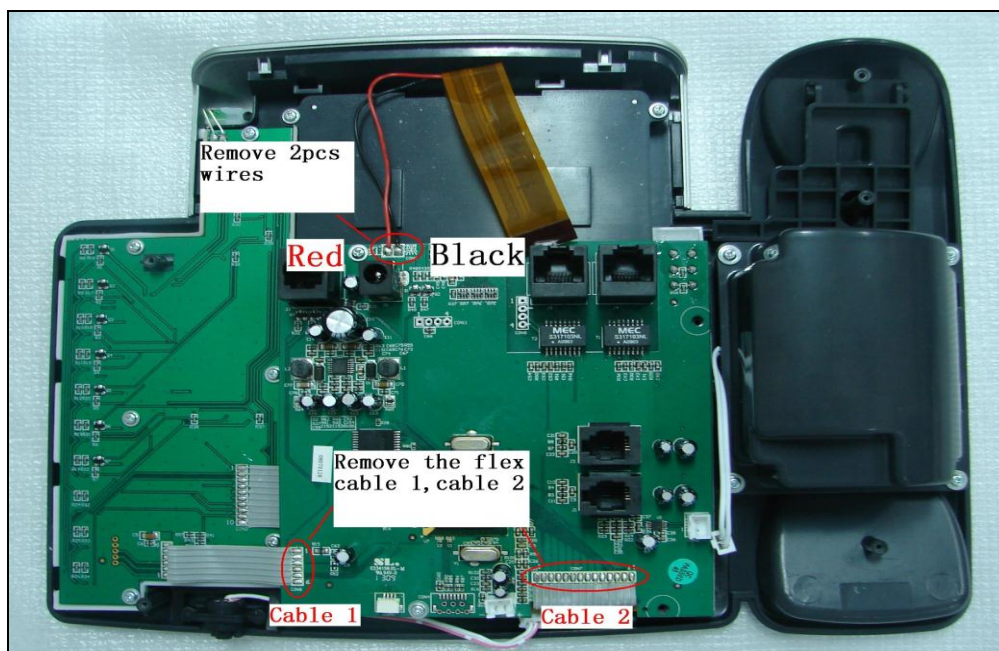


**Step3:** Pull out the male plug of the microphone and speaker, loosen the connector of the LCD module on the direction as shown, and pull out the FPC.





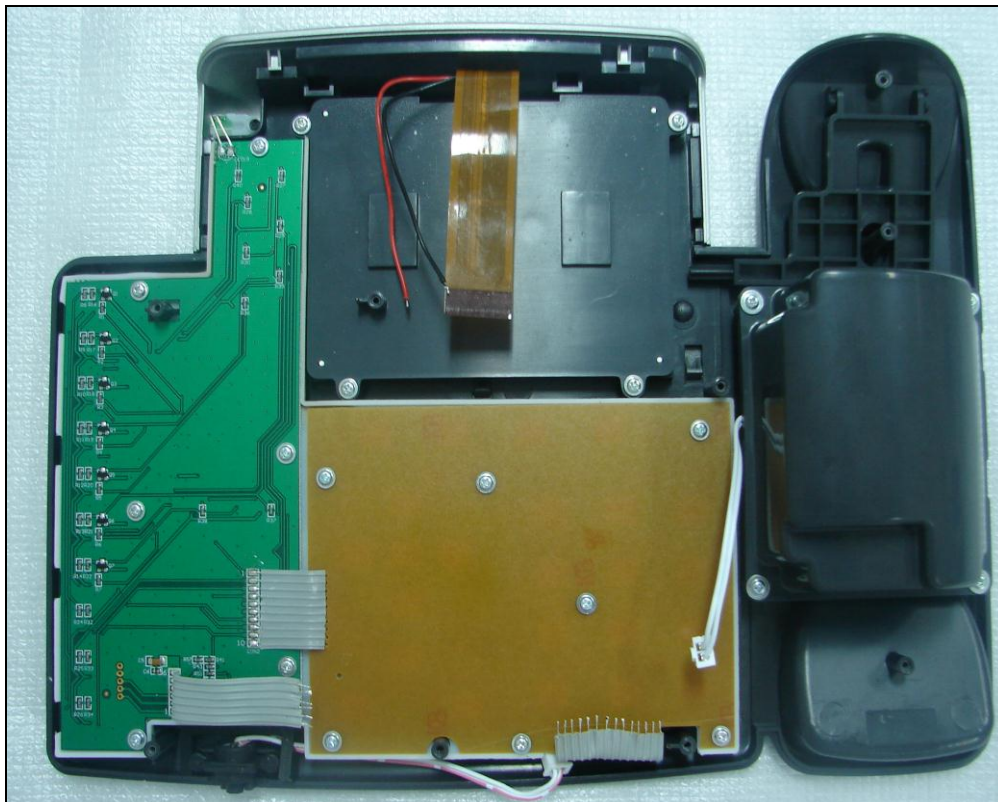
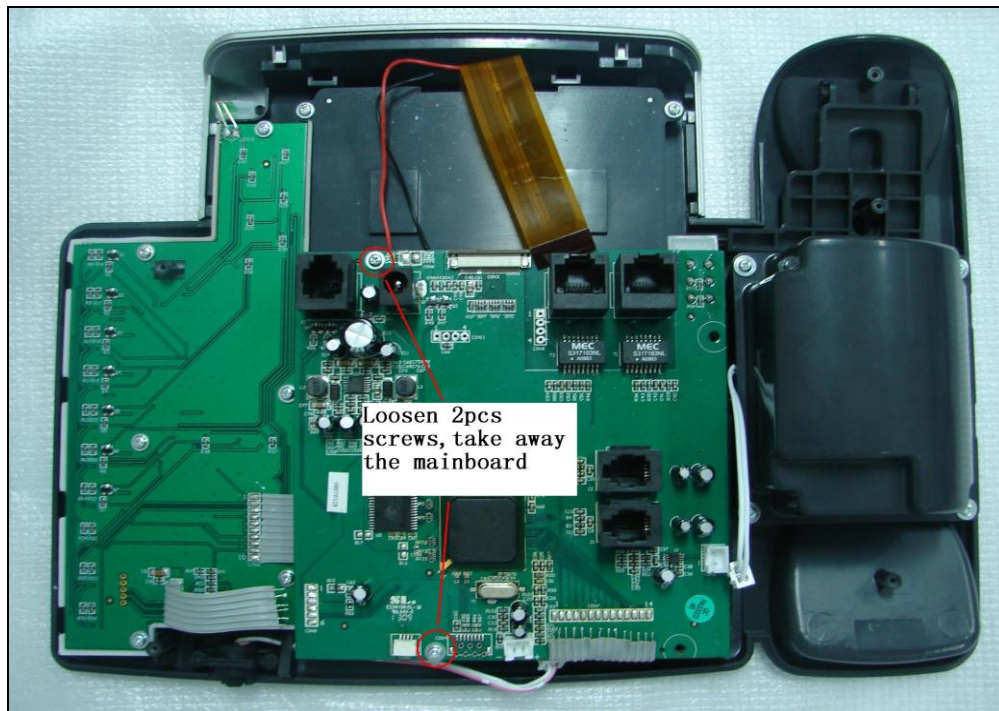
**Step4:** Remove the flex cable1, cable 2 and the wire of LCD backlight with a hot iron.



**Note:**

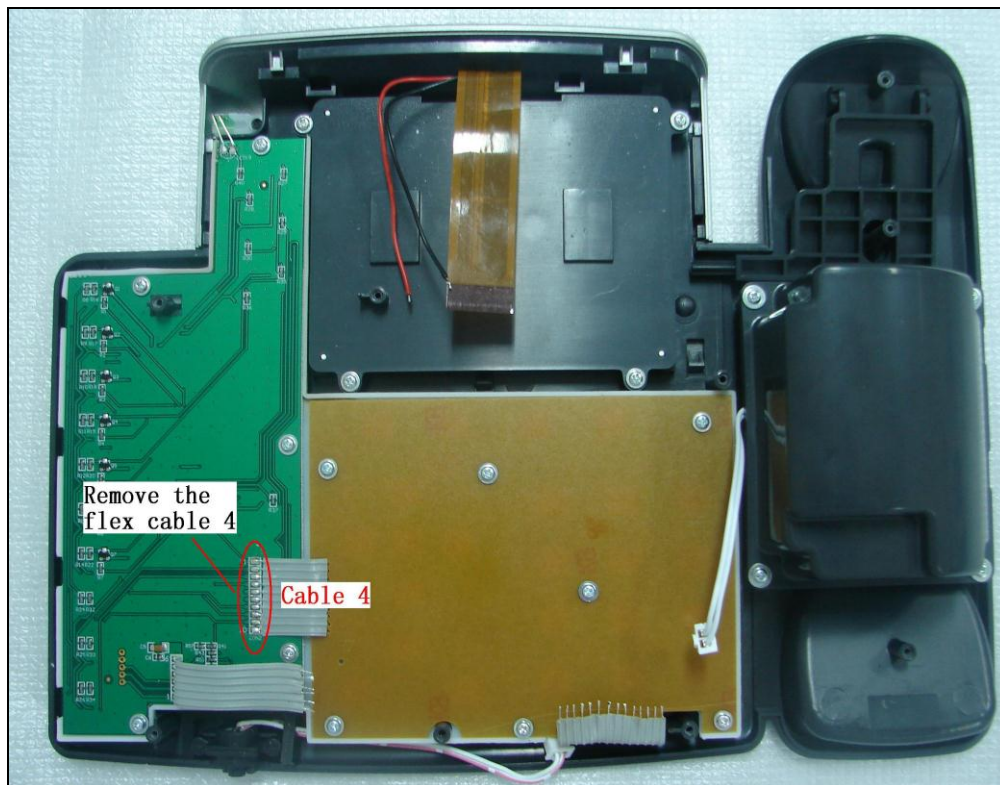
1. The temperature of hot iron must be less than 350℃;
2. 2pcs of LCD backlight wires, the left one is red, and the right one is black.

**Step5:** Loosen 2pcs of screws on the mainboard, and take away the damaged one.



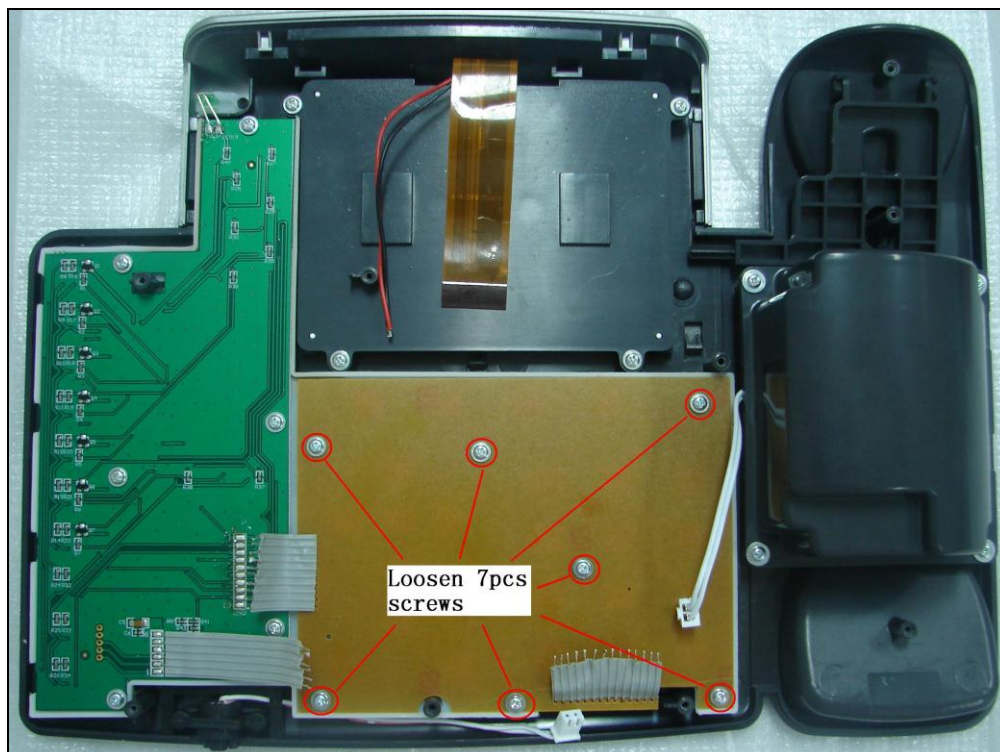


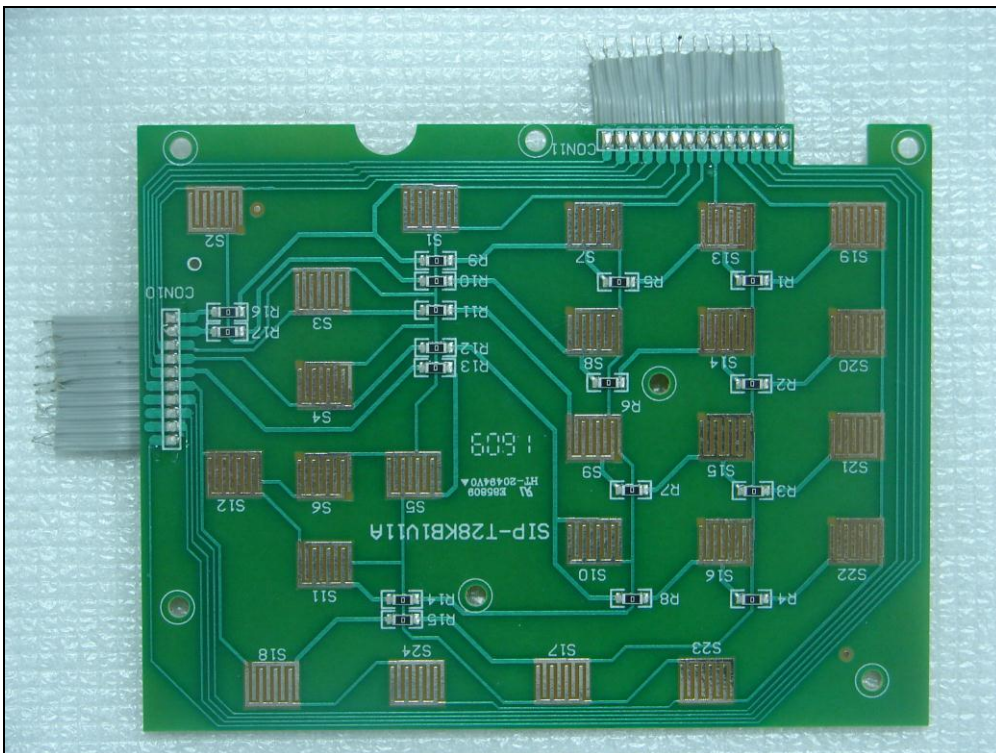
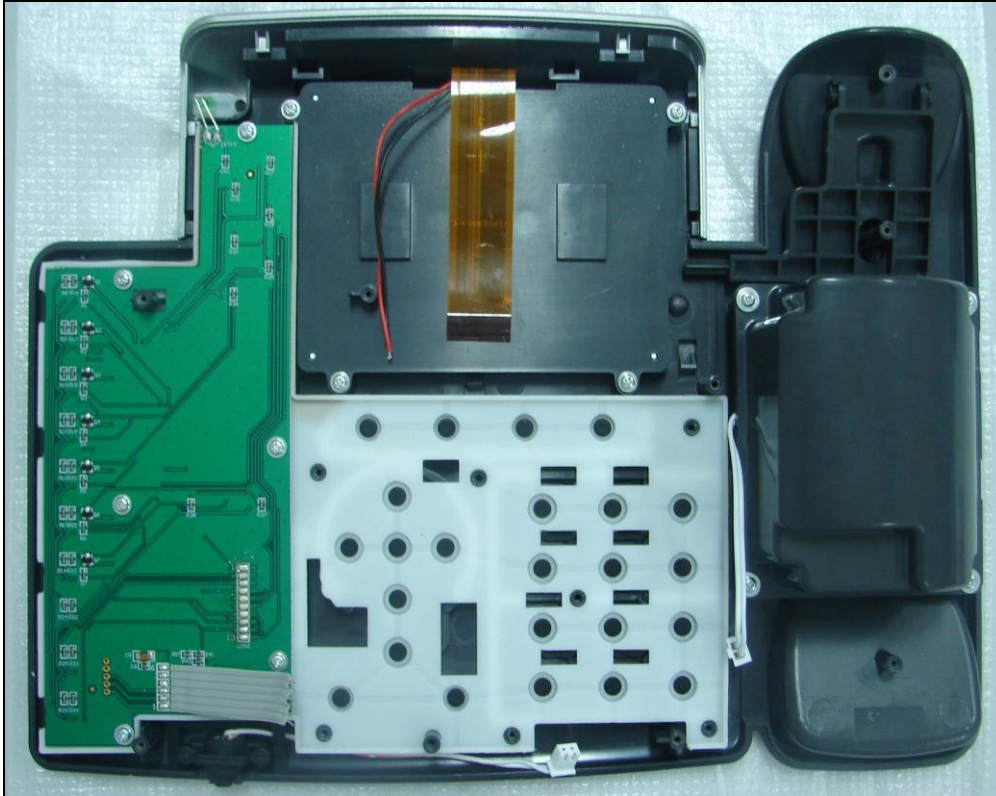
**Step6:** Remove the flex cable 4 with a hot iron.



**Note:** The temperature of hot iron must be less than 350°C.

**Step7:** Loosen 7pcs of screws on the keyboard, and take away the damaged one.





**Step8:** Install the new keyboard in the opposite way following the steps mentioned above.

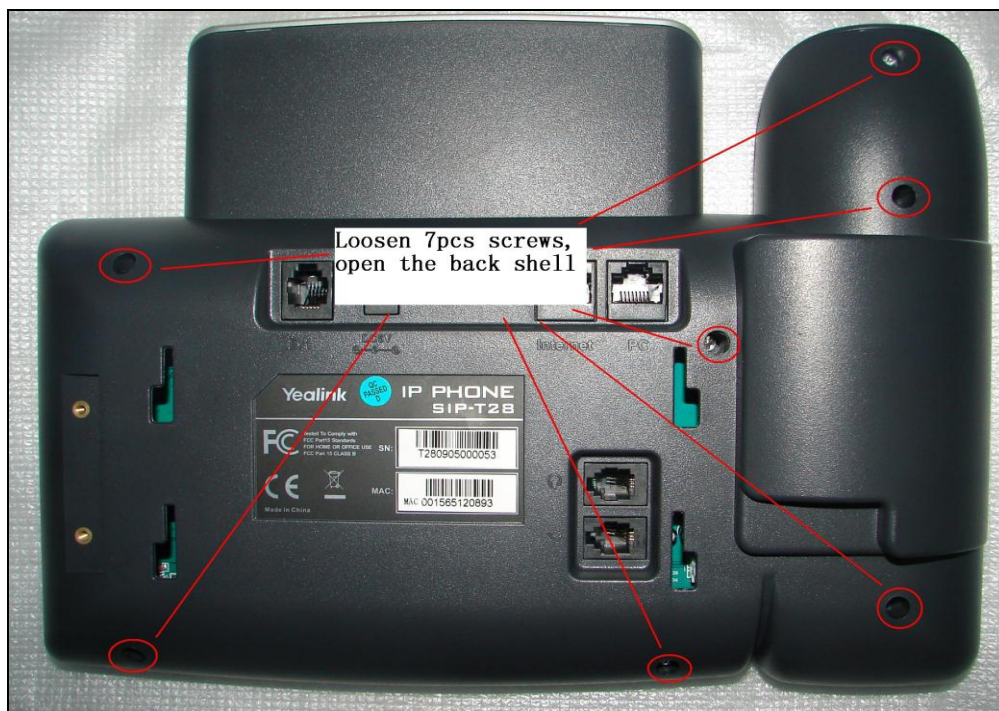


## Replace the speaker

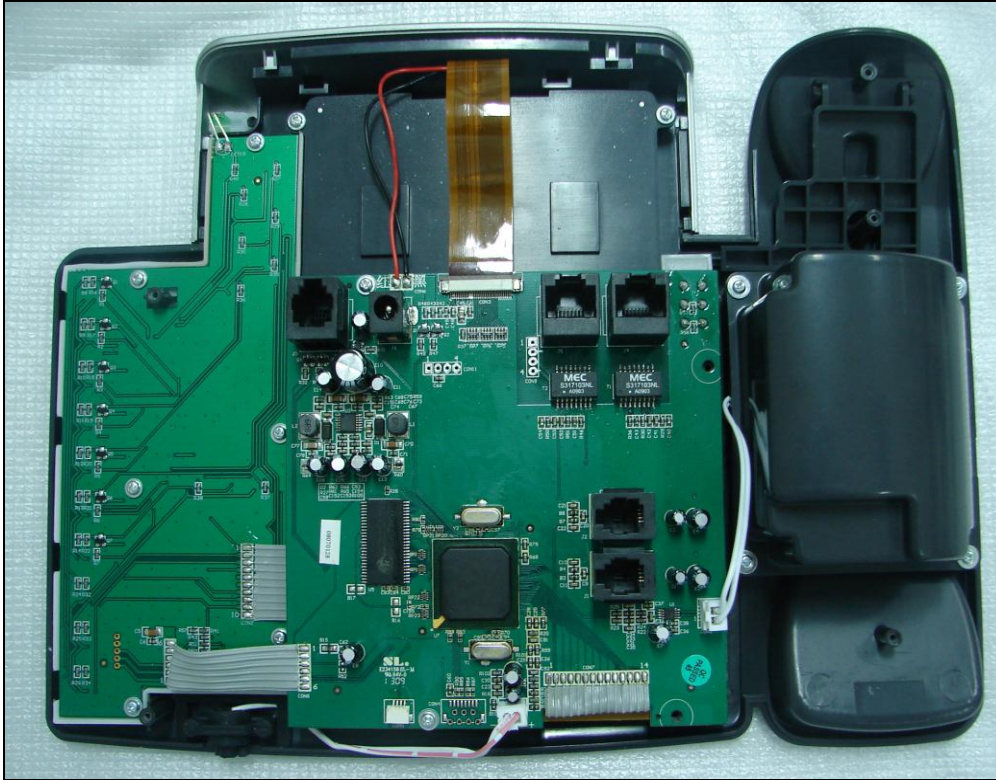
**Step1:** Take down the power, network, handset and the bracket of back shell.



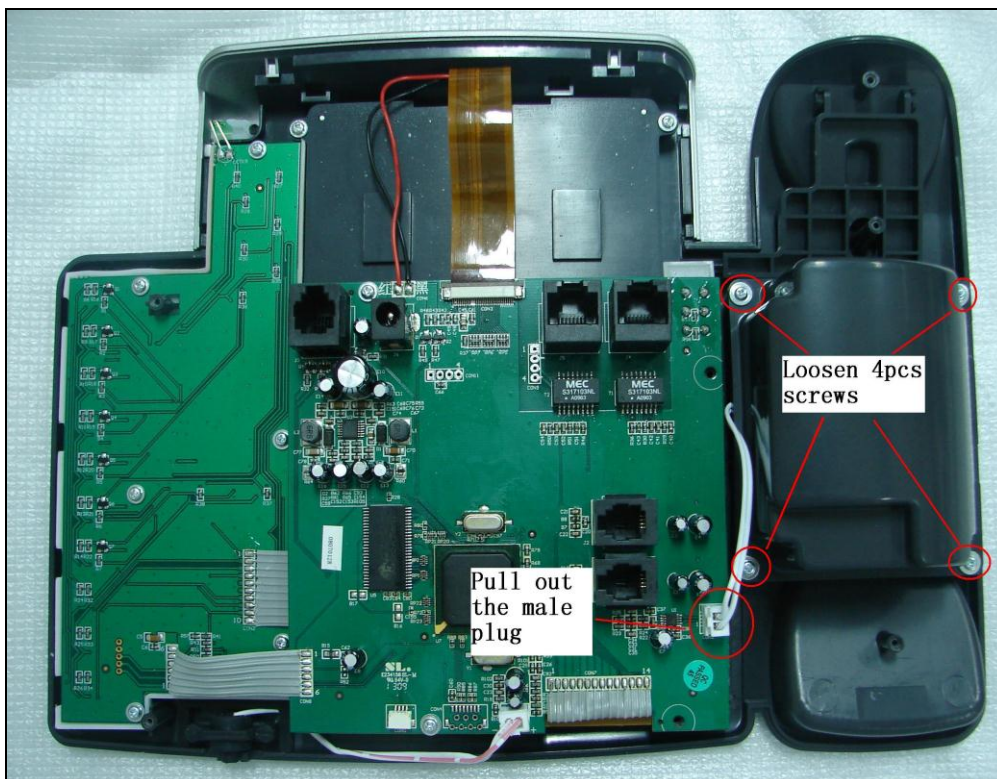
**Step2:** Loosen 7pcs of screws, open the back shell.



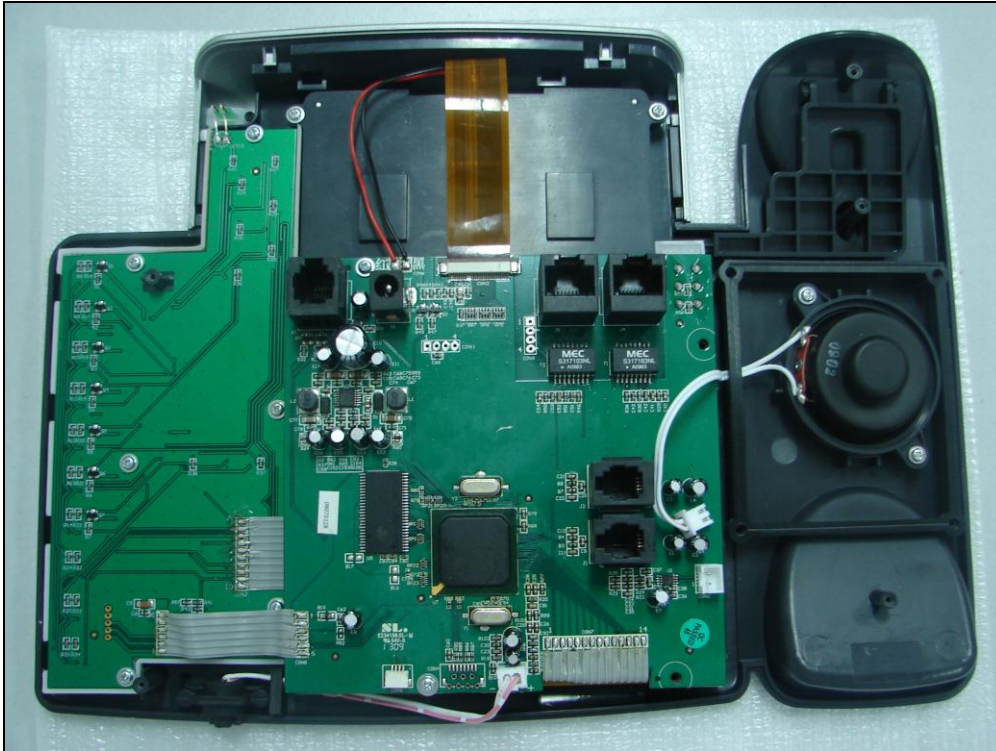




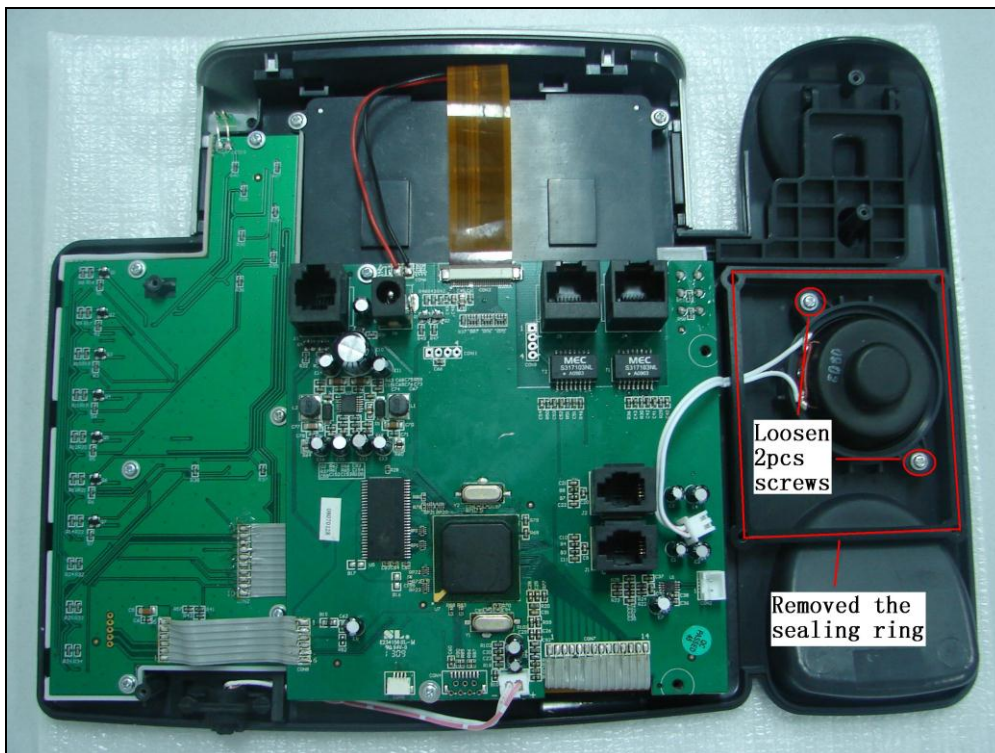
**Step3:** Pull out the male plug of speaker, loosen 4pcs of screws, and open the back shell of speaker.

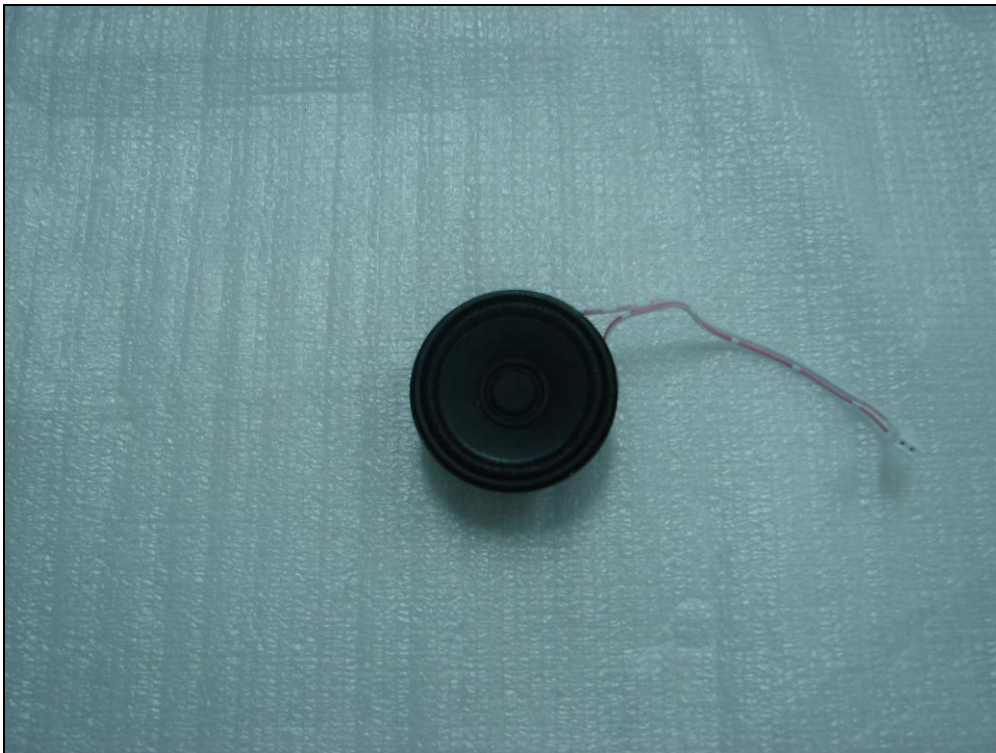
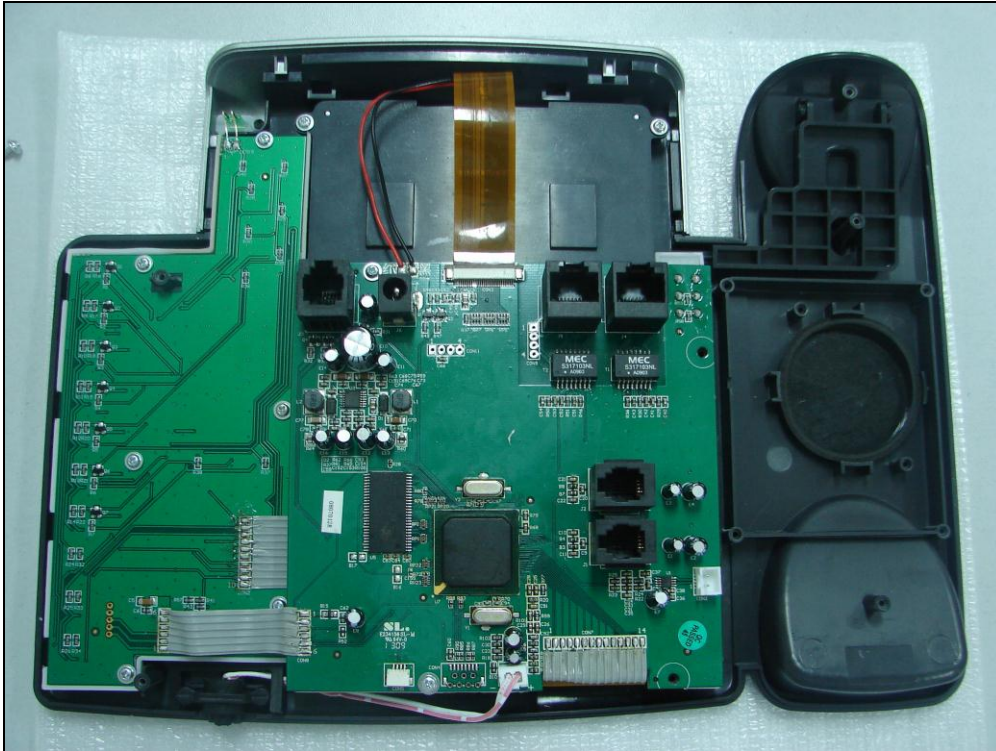






**Step4:** Remove the sealing ring and loosen 2pcs of screws, take away the damaged speaker.





**Step5:** Install the new speaker in the opposite way following the steps mentioned above.