

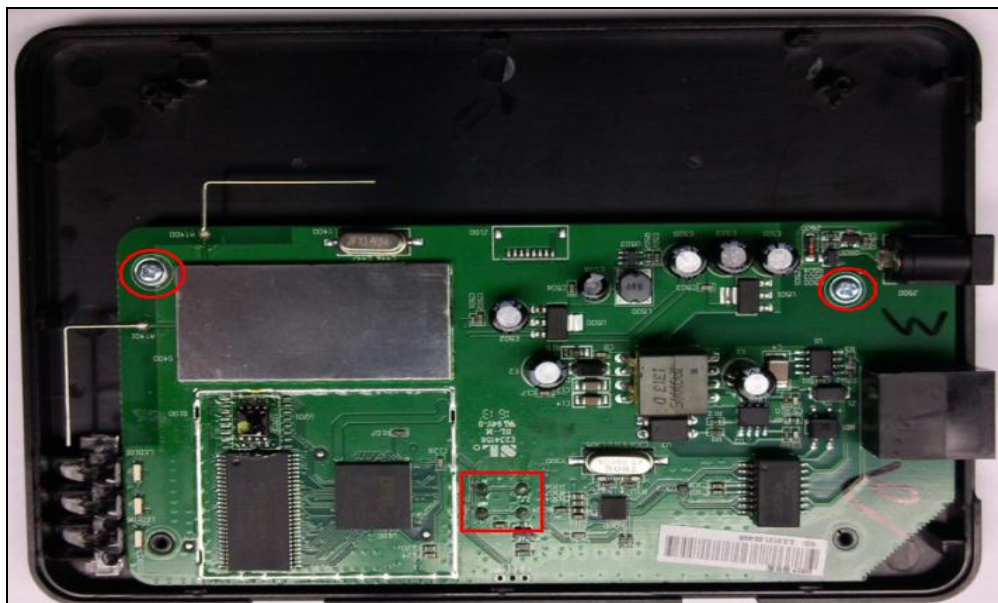
How to replace W52P's hardware components

Replace Base Station's hardware components

- 1) Loosen 4pcs of screws, open the back shell.



- 2) Loosen 2pcs of screws on the mainboard.
- 3) Take down the mainboard, heat the base pins of the device with a hot iron, which are shown in the below red box, and then take them down from the back of the base station.



Replace Handset's hardware components

Step1: Loosen 2 pcs of screws, open the back shell.



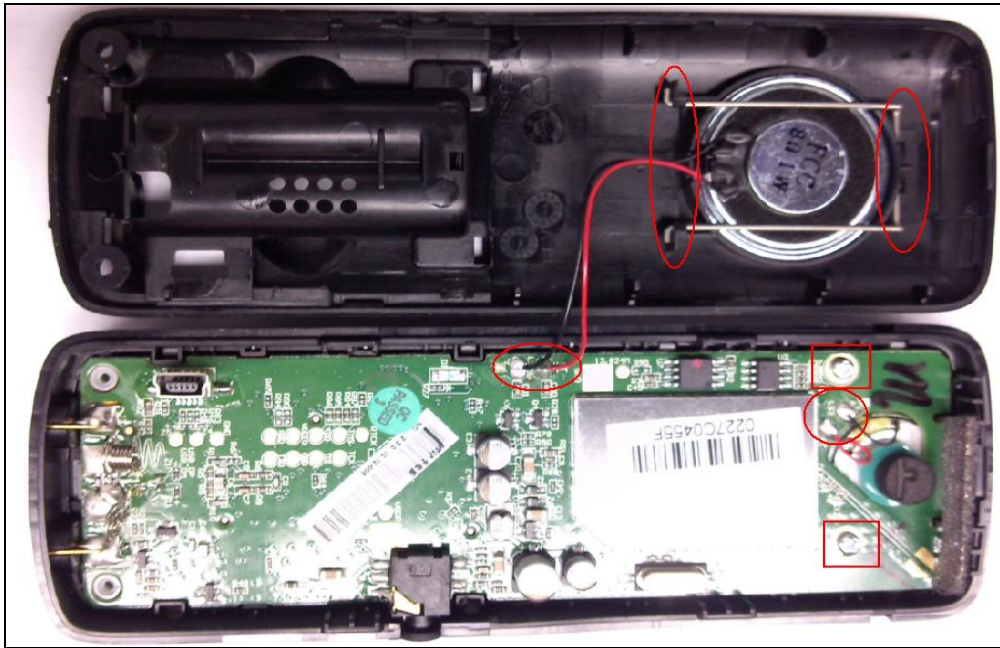
Step2:

1) Replace the speaker

Unsolder the speaker cable with a hot iron, remove the steel buckle, and then replace the speaker.

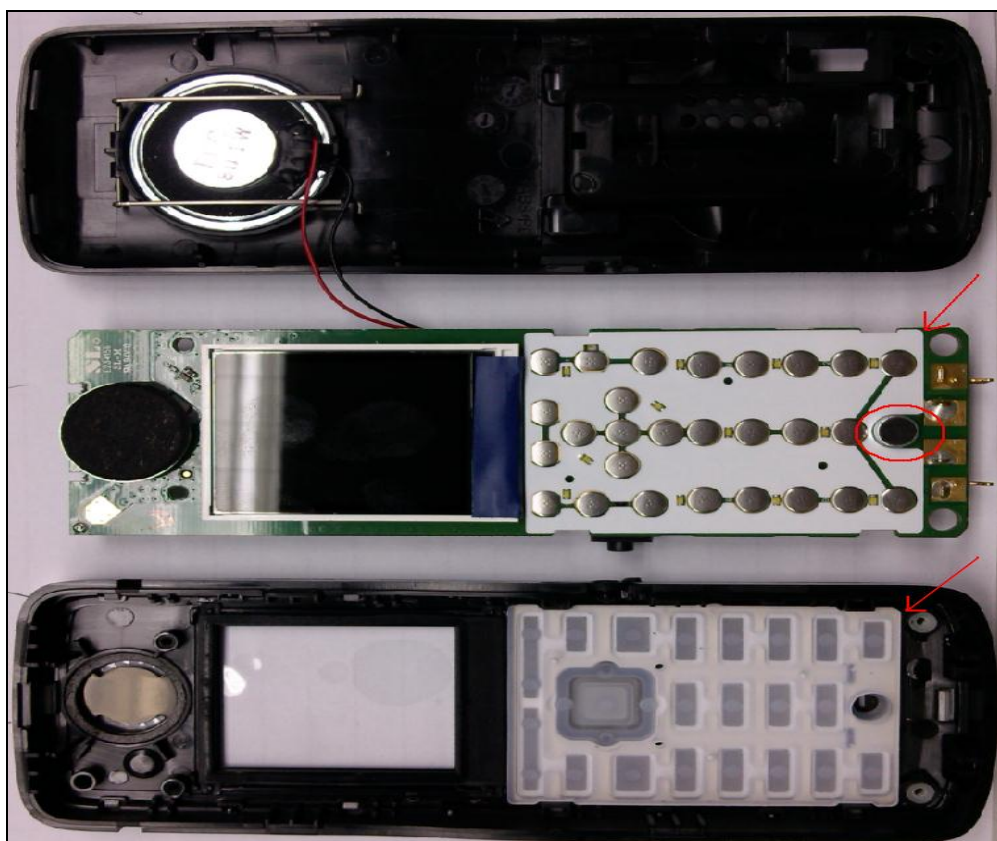
2) Replace the receiver

Unsolder the receiver cable with a hot iron, loosen the screws on the PCB board, open the PCB board from the charger hook, and then replace the receiver.



Step3:

- 1) Replace the MIC, which is shown in the below red circle. Heat from the back with a hot iron, and then use a nipper to take it down.
- 2) Replace the membrane switch and keys, open it as the direction of red arrow, and then replace it.



Step4:

- 1) Gash the double sided adhesive tape between PCB and the LCD as the direction of red arrow, and then turn over the LCD.
- 2) Heat the bonding pad of FPC cable with a hot iron, and then take down the LCD with the help of the other hand.

