

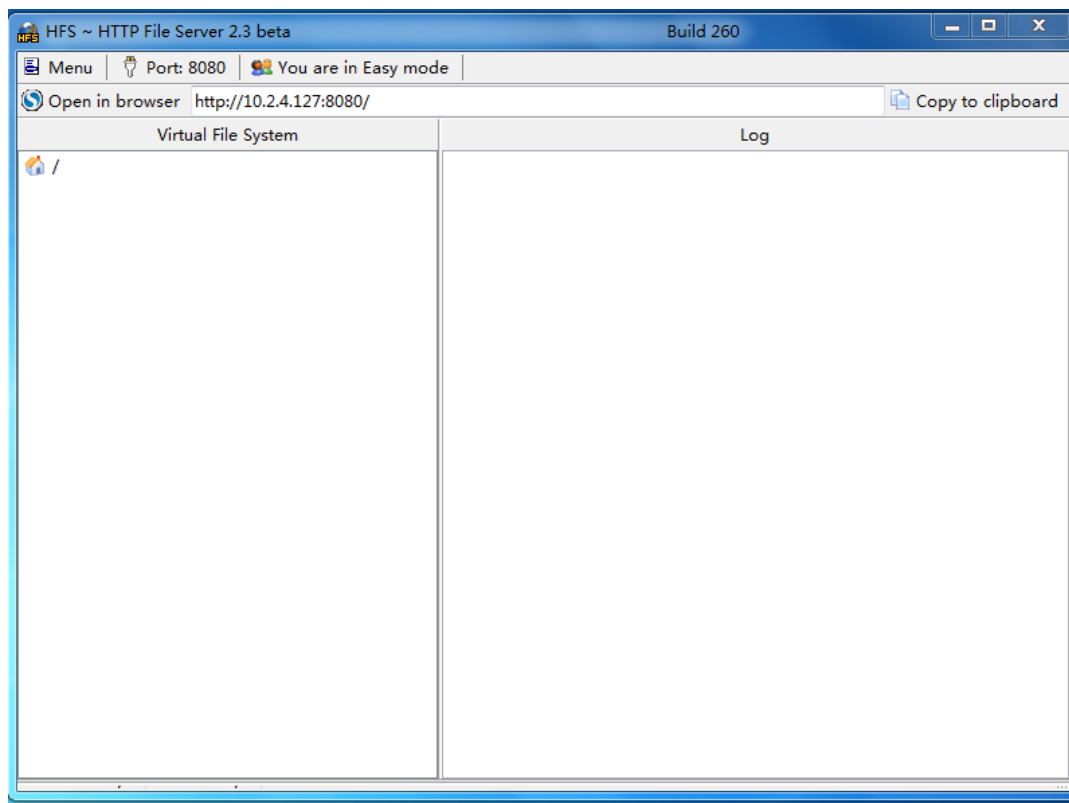
# How to set up the server for auto provision

Take http server as an example:

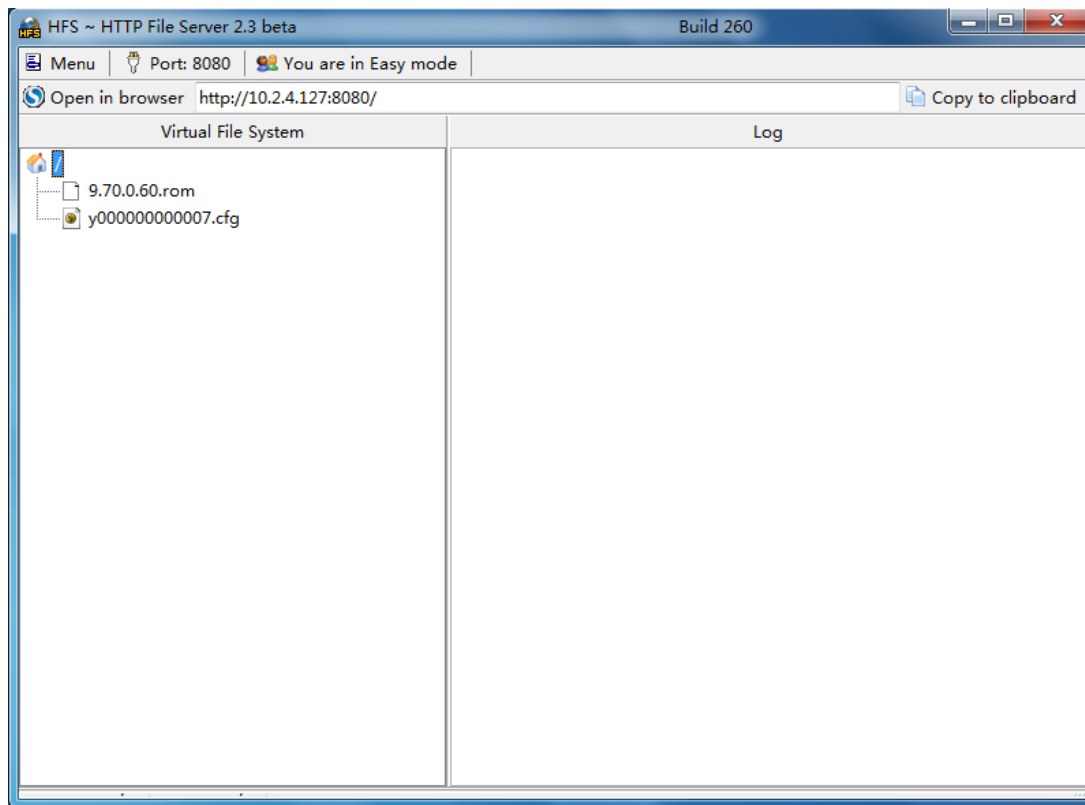
1. Download and install the hfs.exe(Http File System) software



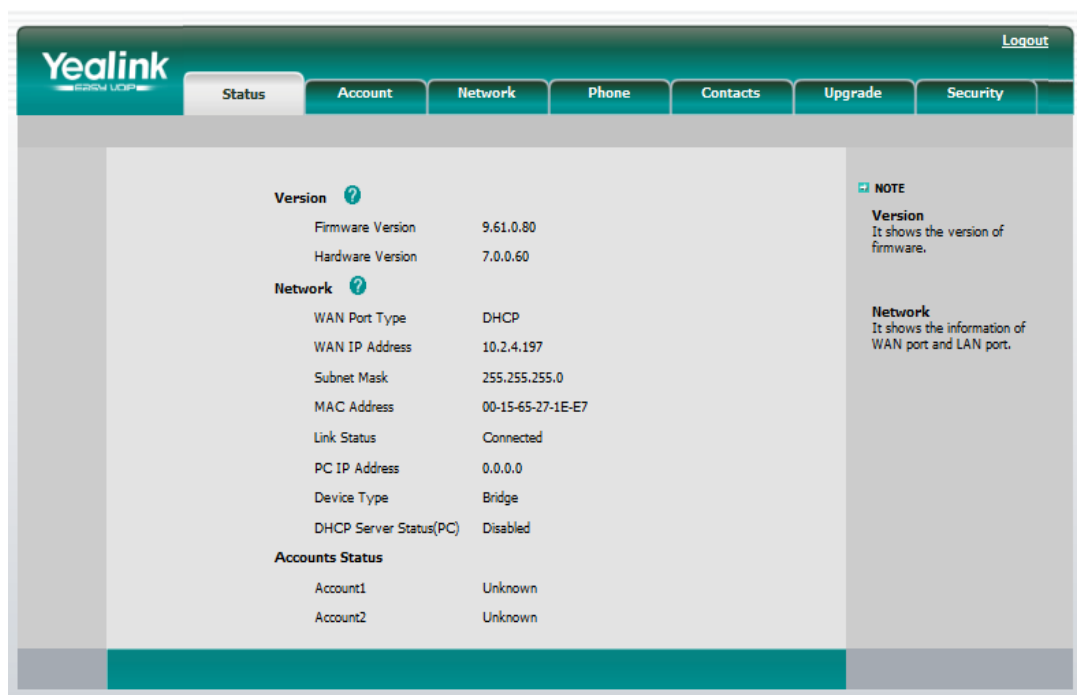
2. Double-click the hfs.exe



3. Place the file for upgrade onto the server



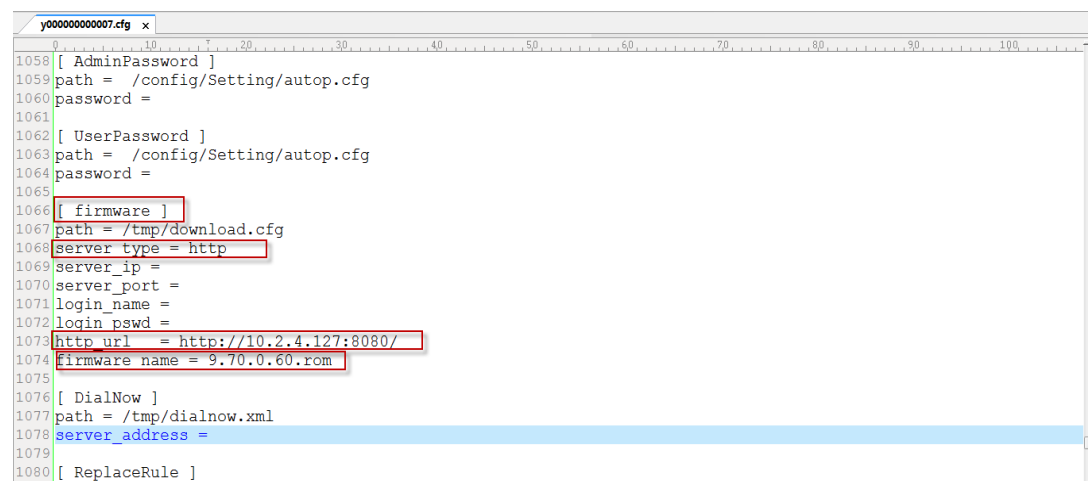
4. If I want to upgrade my phone from version 9.61.0.80 to version 9.70.0.60.  
Below is my phone current version.



- 1) In the y000000000007.cfg file (for T20), in the firmware section, the server\_type should be http, and in the http\_url item, the value should be the directory address of the server in which the configuration files are placed, here mine is <http://10.2.4.127:8080/> . And the firmware\_name item should be the firmware which you want to upgrade to, here mine is 9.70.0.60.rom.

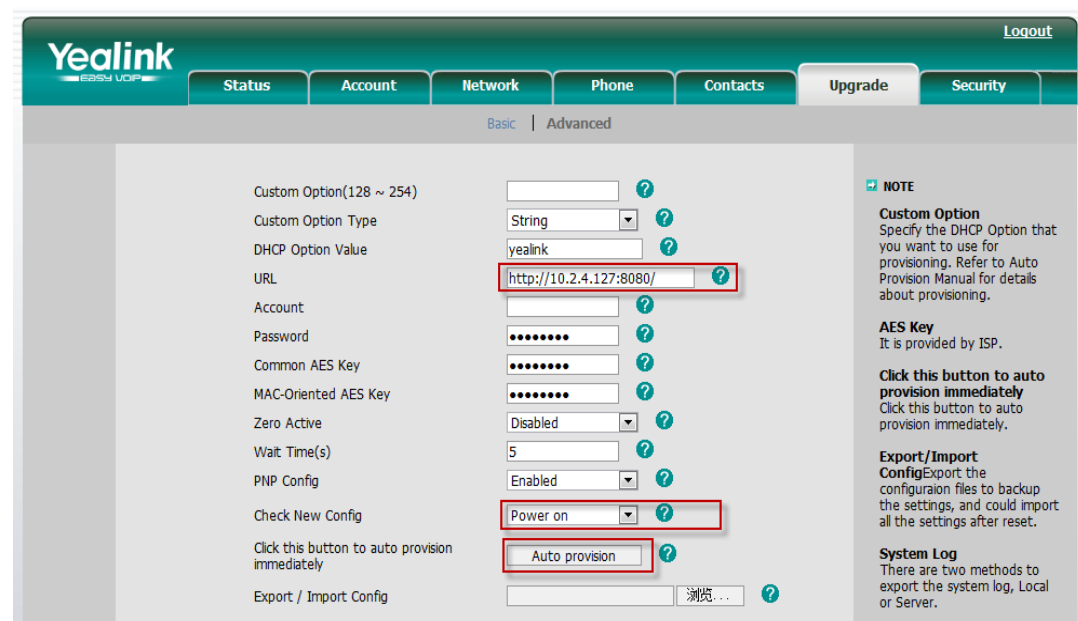
```
[ firmware ]
path = /tmp/download.cfg
server_type = http
server_ip =
server_port =
login_name =
login_pswd =
http_url = http://10.2.4.127:8080/
firmware_name = 9.70.0.60.rom
```

---



```
y000000000007.cfg x
1058 [ AdminPassword ]
1059 path = /config/Setting/autop.cfg
1060 password =
1061
1062 [ UserPassword ]
1063 path = /config/Setting/autop.cfg
1064 password =
1065
1066 [ firmware ]
1067 path = /tmp/download.cfg
1068 server_type = http
1069 server_ip =
1070 server_port =
1071 login_name =
1072 login_pswd =
1073 http_url = http://10.2.4.127:8080/
1074 firmware_name = 9.70.0.60.rom
1075
1076 [ DialNow ]
1077 path = /tmp/dialnow.xml
1078 server_address =
1079
1080 [ ReplaceRule ]
```

2) In the Upgrade→Advanced of the phone's web UI, fill in the directory address of the server in which the configuration files are placed in the URI field, here mine is <http://10.2.4.127:8080/> , and in the “Check New Config” field, choose “Power on” or other modes, and then click the “Auto provision” button to do the upgrade, as below:



Custom Option(128 ~ 254)	
Custom Option Type	String
DHCP Option Value	yealink
URL	http://10.2.4.127:8080/
Account	
Password	*****
Common AES Key	*****
MAC-Oriented AES Key	*****
Zero Active	Disabled
Wait Time(s)	5
PNP Config	Enabled
Check New Config	Power on
Click this button to auto provision immediately	Auto provision
Export / Import Config	

**NOTE**

**Custom Option**  
Specify the DHCP Option that you want to use for provisioning. Refer to Auto Provision Manual for details about provisioning.

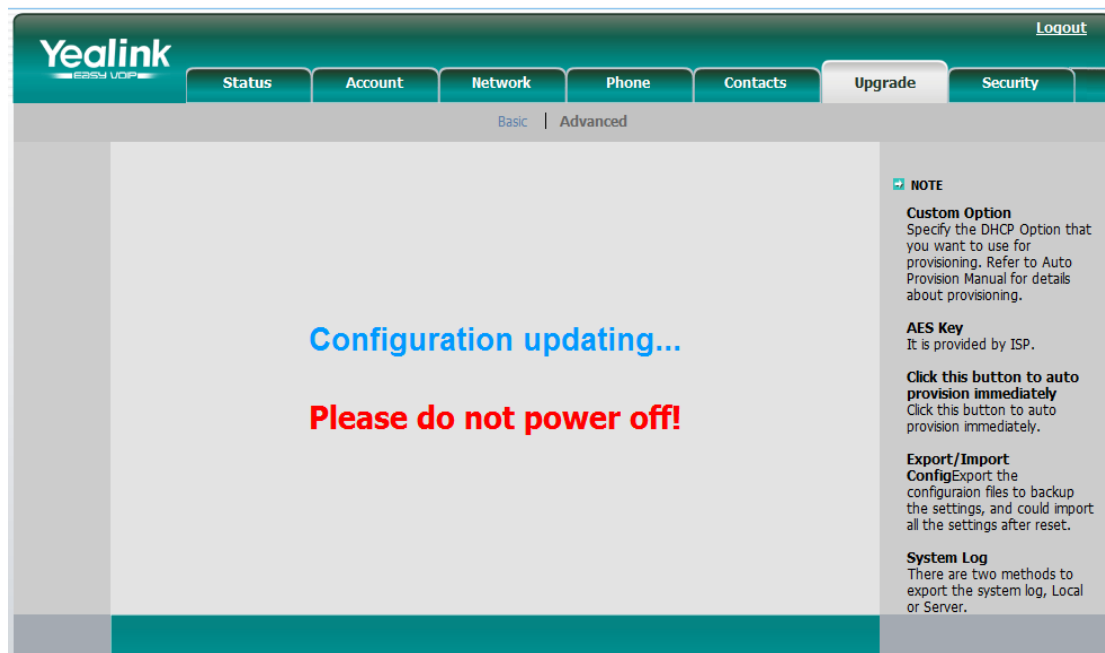
**AES Key**  
It is provided by ISP.

**Click this button to auto provision immediately**  
Click this button to auto provision immediately.

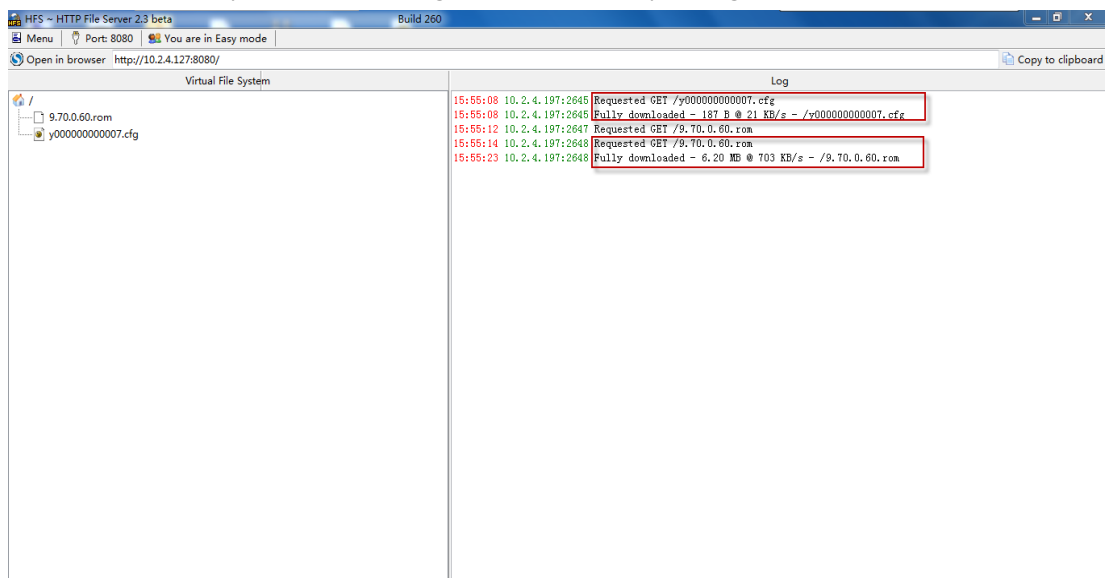
**Export/Import Config**  
Export the configuration files to backup the settings, and could import all the settings after reset.

**System Log**  
There are two methods to export the system log, Local or Server.

The web UI of the phone will show:



On the server side, you can see the log which shows the phone go and fetch the files:



And after that, you can see the phone has been upgrade to the version 9.70.0.60, as below:

Yealink

STATUS

Logout

StatusAccountNetworkPhoneContactsUpgradeSecurity

Version

Firmware Version9.70.0.60

Hardware Version7.0.0.60

Network

Internet Port TypeDHCP

IP Address10.2.4.197

Subnet Mask255.255.255.0

MAC Address00-15-65-27-1E-E7

Link StatusConnected

Router IP Address0.0.0.0

Device TypeBridge

Router DHCPDisabled

Register Status

Account1Disabled

Account2Disabled

NOTE

Version

It shows the version of firmware.

Network

It shows the information of WAN port and LAN port.