

# **Configuration Guide for Yealink IP Phone & PBXnSIP PBX**

## Contents

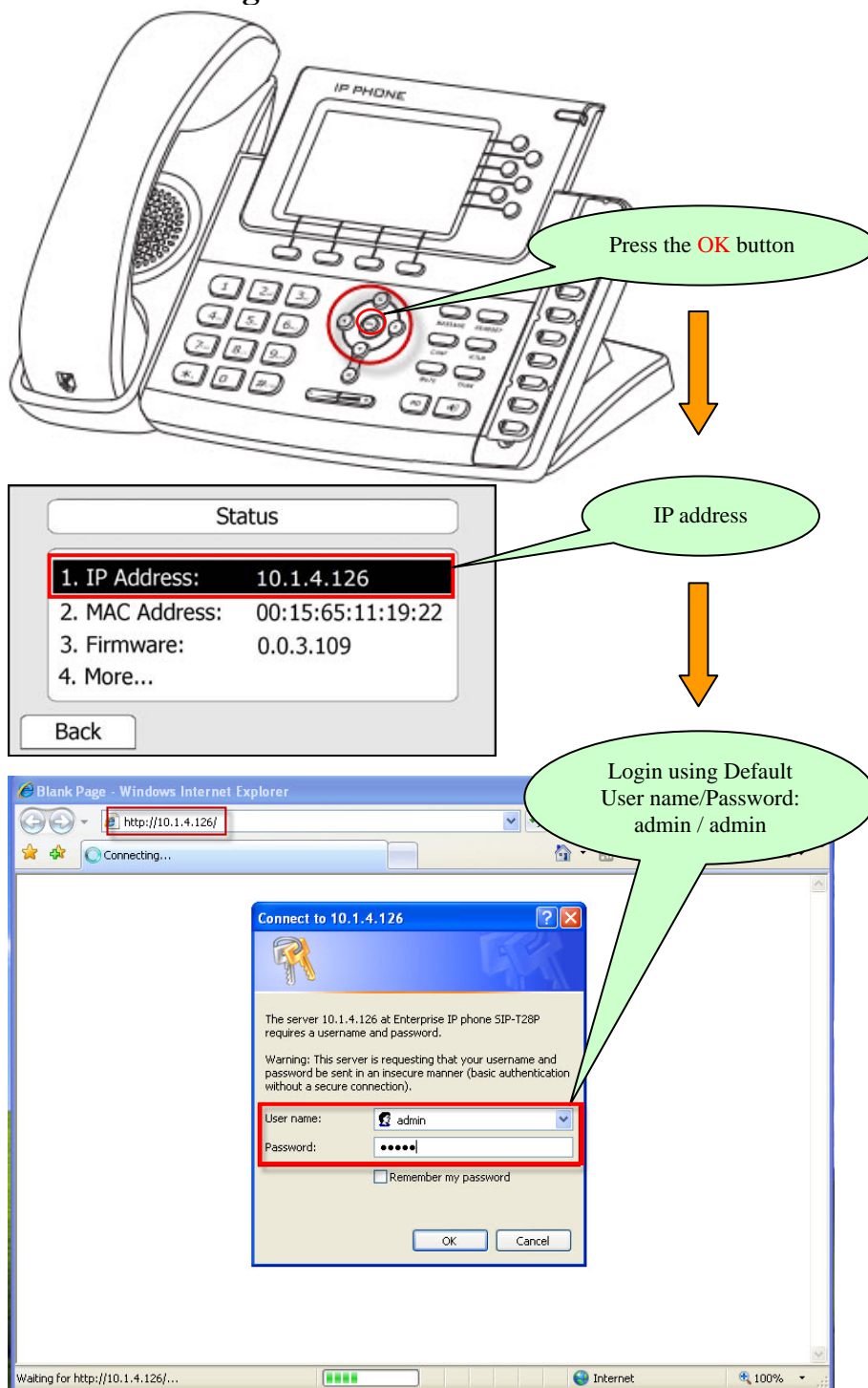
<b>1. Requirements and Preparation .....</b>	<b>2</b>
<b>2. Configure Yealink IP Phone .....</b>	<b>2</b>
2.1 Login to WEB management .....	2
2.2 Configure the Account Settings .....	3
2.3 Configure the DSS Key as BLF .....	4
2.4 Configure the DSS Key as Call Park .....	5
2.5 Configure the DSS Key as Intercom .....	6
<b>3. Auto-configure Yealink Phone .....</b>	<b>6</b>
<b>4. Configure Pbxnsip.....</b>	<b>7</b>
4.1 Login to Pbxnsip .....	7
4.2 Add a Domain .....	7
4.3 Add an Account.....	8
<b>Appendix.....</b>	<b>9</b>
<b>Reference .....</b>	<b>9</b>

## 1. Requirements and Preparation

- Pbxnsip Version 3.0 or higher.
- Software image x.42.x.x or higher running on the Yealink IP Phone.

## 2. Configure Yealink IP Phone

### 2.1 Login to WEB management



## 2.2 Configure the Account Settings

① Select "Account"

② Select one Account

③ Active Account

④ Fill in these fields

⑤ Voicemail code

check Note

After entering the above settings, Account1 will be available to make calls.

**Note :** If the SIP server is behind a NAT, you should enable "NAT Traversal" as "STUN" and then specify a STUN Server. For more details about STUN, please refer to

<http://www.voip-info.org/wiki/view/STUN>. To learn about NAT, you should refer to

<http://www.voip-info.org/wiki/view/NAT+and+VOIP>

## 2.3 Configure the DSS Key as BLF

① Select "Phone"

② Select "DSS Key"

③ Select "BLF"

④ Select the right line

⑤ Extension number

⑥ Pickup code

Key	Type	Mode	Line	Expansion	Pickup Number
DSS Key 1	BLF	Conference	Line 1	101	*87
DSS Key 2		Call Park	Line 1		
DSS Key 3		Conference	Line 1		
DSS Key 4	N/A				
DSS Key 5	N/A				
DSS Key 6	N/A	Conference	Line 1		
DSS Key 7	N/A	Conference	Line 1		
DSS Key 8	N/A	Conference	Line 1		
DSS Key 9	N/A	Conference	Line 1		
DSS Key 10	N/A	Conference	Line 1	*9315	

NOTE

**Key Type**  
The free function key 'Types' Speed Dial, BLF, Key Event, Intercom, URL.

**Field function**  
Field function with specified account. This feature must be supported by the sip server.

**Key Event**  
Key events are predefined shortcuts to phone and call functions.

**Intercom**  
Enable the 'Intercom' mode and it is useful in an office environment as a quick access to connect to the operator or the secretary.

**URL**  
This key function allows you to send HTTP requests to a web server.

Line Key >>

Confirm Cancel

After entering the above settings, DSS Key1 is ready as BLF for Line 1, monitoring Extension 101. When there's an incoming call on 101, DSS Key1 will flash red and you can directly press it to pick up the call.

## 2.4 Configure the DSS Key as Call Park

① Select "Phone"

② Select "DSS Key"

③ Select "KeyEvent"

④ Select "Call Park"

⑤ Select the right line

⑥ Park code + parking orbit

Key	Type	Mode	Line	Expansion	Pickup Number
DSS Key 1	BLF	Conference	Line 1	101	*87
DSS Key 2	KeyEvent	Call Park	Line 1	*85	
DSS Key 3	N/A	Conference	Line 1		
DSS Key 4	N/A	Conference	Line 1		
DSS Key 5	N/A	Conference	Line 1		
DSS Key 6	N/A	Conference	Line 1		
DSS Key 7	N/A	Conference	Line 1		
DSS Key 8	N/A	Conference	Line 1		
DSS Key 9	N/A	Conference	Line 1		
DSS Key 10	N/A	Conference	Line 1	*9315	

NOTE

**Key Type**  
The free function key 'Types' Speed Dial, BLF, Key Event, Intercom, URL.

**BLF**  
The button can be used to indicate a Busy Line with a red light. This button is only available when the sip server is enabled.

**Key Event**  
Key events are predefined shortcuts to phone and call functions.

**Intercom**  
Enable the 'Intercom' mode and it is useful in an office environment as a quick access to connect to the operator or the secretary.

**URL**  
This key function allows you to send HTTP requests to a web server.

Confirm Cancel

After entering the above settings, DSS Key2 is ready as Call Park for Line1.

An active call can be parked by pressing DSS Key2 during your conversation.

## 2.5 Configure the DSS Key as Intercom

① Select "Phone"

② Select "DSS Key"

③ Select "Intercom"

④ Select the right line

⑤ Intercom code + extension

Key	Type	Mode	Line	Expansion	Pickup Number
DSS Key 1	BLF	Conference	Line 1	101	*87
DSS Key 2	KeyEvent	Call Park	Line 1	*85	
DSS Key 3	Intercom	Conference	Line 1	*80105	
DSS Key 4	Intercom	Conference	Line 1		
DSS Key 5	Intercom	Conference	Line 1		
DSS Key 6	Intercom	Conference	Line 1		
DSS Key 7	N/A				
DSS Key 8	N/A	Conference	Line 1		
DSS Key 9	N/A	Conference	Line 1		
DSS Key 10	N/A	Conference	Line 1	*9315	

NOTE

**Key Type**  
The free function key 'Types' Speed Dial, BLF, Key Event, Intercom, URL.

**BLF**  
The button can be configured Busy Line Field function with specified account. This feature must be supported by the sip server.

**Key Event**  
Key events are predefined shortcuts to phone and call functions.

**Intercom**  
Enable the 'Intercom' mode and it is useful in an office environment as a quick access to connect to the operator or the secretary.

**URL**  
This key function allows you to send HTTP requests to a web server.

Confirm Cancel

After entering the above settings, DSS Key3 will work as an Intercom key with Line1.

## 3. Auto-configure Yealink Phone

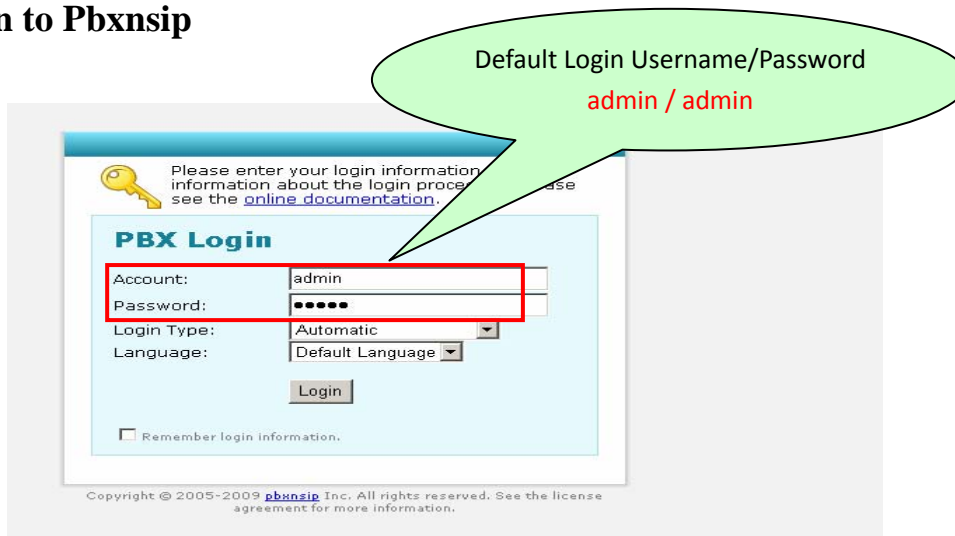
Please refer to Yealink Document [Auto Provision Manual](#):

<http://www.yealink.com/fae/Auto Provision Manual.rar>

## 4. Configure PbxnSip

### 4.1 Login to Pbxnsip

Default Login Username/Password  
**admin / admin**



Please enter your login information. For more information about the login process, please see the [online documentation](#).

**PBX Login**

Account:

Password:

Login Type:

Language:

☐ Remember login information.

Copyright © 2005-2009 [pbxnsip](#) Inc. All rights reserved. See the license agreement for more information.

### 4.2 Add a Domain

**pbxnsip** Version 3

Settings Domains Email Status

List

**Create Domain**

Please enter the name of the new domain. The primary name will be used to find the domain. You can enter additional names to find the domain (please use space to separate names). The PBX checks if the name or one of its alias names already exists.

**Domain Information:**

Primary Name:

Alias Names:

Create from file:

① Click **Create**

② Enter **Domain name**

② Click **Create**



## 4.3 Add an Account

**pbxnsip Version 3**

Settings Domains Email Status

List Create

**Current Domains**

This list shows the currently available domains on this system. It does not mean that you automatically set up the necessary DNS records. By clicking on the domain link button, you will move into domain data page. If domain data will be lost.

Alias	Domain	Users	Delete
localhost	localhost	90	X

① Select a Domain

**pbxnsip Version 3**

Settings Accounts Trunks Dial-Plans Status Admin

**Domain Administration**

Domain **Settings** are necessary to configure the behavior of the PBX in this domain. Here you can define how features are mapped to star codes.

**Accounts** are anything that you can dial on your PBX. Accounts include Extensions, Auto Attendants, Conference Rooms. These numbers may be service numbers of the PBX as well as the numbers of your extensions. Extensions are accounts that are assigned to your users. They may include a mailbox and redirection.

**Trunks** are used to connect your PBX to the outside world. Trunks can be PSTN gateways or they can be ITSP accounts that you signed up for. Trunks are also important for matching incoming calls.

**Dial Plans** tell the PBX how to reach an outside number. Usually you will use a trunk to terminate outgoing calls. Each extension may have its own dial plan. With this technology, you can allow or restrict extensions from making calls to specific numbers.

The **Status** shows you what is going on in the domain. If you are logged in with system administrator, you can see the status of the domain.

② Click Account

**pbxnsip Version 3**

Settings Accounts Trunks Dial-Plans Status

List **Create**

**Create New Accounts**

Accounts are numbers that you can call on the PBX. Please see the help for more details. **Tip:** You may enter more than one name. If you use a space between the names, you will set up one account with different names 123 and theo and the second with the names 123 and theo.

Account Type: Extension  
Dial Plan: Domain Default  
Plug and Play: Manual

Number	First Name	Last Name	SIP Pass	Web Pass	IN	Email
100			100			
2						
3						
4						
5						
6						
7						
8						
9						
10						

Enter Number / Password

Click Create

Create

**Note:** Here the "Number" and "SIP Pass" is the register Extension Number and Password.

## Appendix

### 1. Default Basic Dial Code on Pbxnsip System

Voice Mail (VMail)	*97
Call Park	*85
Callpark Retrieve	*86

## Reference

- ◆ [www.Pbxnsip.com](http://www.Pbxnsip.com)
- ◆ [www.yealink.com](http://www.yealink.com)